

G.12



Museum of New Zealand Te Papa Tongarewa

Te Pūrongo ā Tau Annual Report

2010/11

In accordance with section 150 of the Crown Entities Act 2004, this annual report of the Museum of New Zealand Te Papa Tongarewa for 2010/11 is presented to the House of Representatives.

Ngā Ihirangi – Contents

Part 1: Ngā Tauāki Tirohanga Whānui – Overview Statements

From the Chairman	3
From the Chief Executive and Kaihautū	5
Performance at a glance	7

Part 2: Museum of New Zealand Te Papa Tongarewa

Accountability and legislation	11
Vision, outcomes, outputs, and performance measures	12
Governance and management	14
Capability – people, process, and technology	17

Part 3: Te Tauāki o ngā Paearu Ratonga me te Pūtea Statement of Service Performance and Financial Statements

Statement of Service Performance	23
Financial Statements	31

Āpitihanga – Appendices

Loans	65
Workshops and expert knowledge exchanges	69
Acquisitions	72
Publications and conference presentations	82

Ō mātou hoa – Our Partners	89
----------------------------	----

Part 1: Ngā Tauāki Tirohanga Whānui – Overview



Chairman's statement

Ka mahuta ake te whakaaro ki ērā o ngā Māreikura, ngā rātā whakaruruhau o runga i o tātau marae maha, ngā parekura, ngā Ikauihua o te wā, rātāu i hakiri ai o tātau taringa, i noho ai te ngākau mamae, te roimata hei ārai atu i te āhuetanga mō te hunga ka huri atu ki tua o te wharāu.

Kia hoki mai ki a tātau ngā manu kōrihi hei tuku i te ātahu e huri mai ai te minenga ki te tautoko i ngā āhuetanga pāpai o te ao.

A year of transition and challenge

The financial year to 30 June 2011 has been a transition year in many ways. We farewelled John Judge as Chairman of the Board after ten years on the Board. We welcomed Wendy Lai, Fiona Campbell, and Philip Carter onto the Board. Michael Houlihan joined us as Chief Executive in August.

Since Michael arrived, the Board and leadership team have undertaken an envisioning process to guide Te Papa through the next 10 years, and to ensure Te Papa remains relevant for New Zealanders and people from around the world. Reassessing our core values and refreshing our vision for the future were the first steps, and since then we have been having conversations with staff, colleagues, partners, and audiences to make sure that Te Papa understands and meets the needs of our diverse communities.

The year has been a challenging one for Aotearoa New Zealand. The Pike River mine disaster and the Canterbury earthquakes have profoundly affected the nation. The effects of the recession also continue to be felt, both locally and internationally.

Despite these challenges, Te Papa has maintained its track record of success. More than 1.3 million people visited Te Papa this year. Total visitor numbers since opening now exceed 18.8 million.

Acknowledging our partners

The ongoing commitment and support of Te Papa's sponsors has been extremely encouraging and greatly appreciated. We maintained relationships with our founding partners and other long-term sponsors, and we also established exciting new partnerships for short-term projects.

Now in its fifteenth year, we appreciate Wellington City Council's ongoing commitment to the role we play in Wellington as the 'coolest little capital in the world'. The Council's support allows Te Papa to offer an exciting exhibition and events programme that benefits both Wellington and the wider region by attracting visitors and tourists.

Visa continued to help drive and promote Te Papa's success, proudly supporting the exhibitions in our premier gallery space, the Visa Platinum Gallery. For the stunning exhibition *European Masters: 19th–20th century art from the Städel Museum*, Te Papa welcomed Deutsche Bank, DHL Global Forwarding, Siemens, and the Goethe-Institut as associate sponsors.

The Visa Platinum Gallery also showcased the powerful coming together of Māori as a living culture in the *E Tū Ake: Standing Strong* exhibition, assisted by the Pelorus Trust as principal funding partner, and Te Puni Kōkiri.

Our cultural partner TVNZ provided invaluable archival footage for two major exhibitions – *Slice of Heaven: 20th Century Aotearoa* and *Brian Brake: Lens on the world*. A hugely successful digital photography education programme was run in conjunction with *Brian Brake*, supported by our founding partner and technology provider HP. We were also pleased to welcome Kodak on board as sponsors of the programme.

For Te Papa's signature Matariki Festival, New Zealand Post returned as principal sponsor, joined by Te Puni Kōkiri, Wellington City Council, Te Taura Whiri i te Reo Māori, the Southern Trust, Crown Forestry Rental Trust, and TelstraClear, who powered the live webcast of Kaumātua Kapa Haka.

Our long-term partners not only support the infrastructure that drives Te Papa but contribute to our wider initiatives. TelstraClear keeps Te Papa connected, and Ricoh provides our document solutions. The Earthquake Commission and GNS Science help to deliver major public events and education programmes. In October 2010, they were major contributors to our biennial Earth Rocks event. The disaster preparedness message was all too relevant in the wake of the Christchurch earthquakes.

A strong financial position

Te Papa's financial results were favourable, particularly given the economic climate, with operating revenue of almost \$47 million. Overall, we had an operating surplus of nearly \$600,000 before depreciation. After depreciation, the result was a net deficit of around \$12 million – an improved result against a budgeted deficit of almost \$13.5 million.

Ngā mihi – thanks

The Board wishes to acknowledge the Minister for Arts, Culture and Heritage, Hon Christopher Finlayson, for his ongoing support and enthusiasm for Te Papa's work. I would also like to thank outgoing Board member Sue Piper for her contribution to Te Papa, particularly as Chair of the Board's Assurance and Risk Committee.

The dedication and enthusiasm of the Board, Te Papa's management team, and staff are key to Te Papa's success, and I would like to thank them all for their contributions over the past year. I look forward to exciting developments over the next year as we finalise and put into action the new strategic plan.

A handwritten signature in black ink, consisting of several overlapping loops and a long horizontal stroke extending to the right.

Sir Wira Gardiner KNZM

Chairman

Chief Executive and Kaihautū



He mea purupurua te Atarau o te whare kia kore ai e kitea, ko koutou rā ērā e ngā karangatanga maha ka toremi atu ki ngā pekanga wai o te anu matao. Kua kore koutou e kitea e titakataka ana i runga i o tātau Marae maha. Haere atu rā

Kia huri ake ki a tātau e pae nei i roto i ngā āhuatanga e whakaahuatia nei i runga i a Papatuānuku, mai i a Ranginui mē tō rāua whānau, ka whakaaro ake te hinengaro, he aha rā ēnei tohu e huapae nei i mua i a tātau. Waiho koa mā te wā ka kitea ngā hua.

Like many others in Aotearoa New Zealand, our thoughts go out to all those affected by the Christchurch earthquakes and Pike River mine disaster. We saw the country pull together through these difficult times and are proud that our staff were among those to offer support in Christchurch and here at Te Papa when people landed in Wellington following the earthquake. Our ongoing commitment to working alongside colleagues and partners in Christchurch to assist with practical recovery projects will be for years to come.

Envisioning the Future

It's time for reflection here at Te Papa too. Our challenge is to remain true to our purpose and relevant in an ever-changing world. To achieve this, we have embarked on a major new initiative, *Envisioning the Future*, which will result in a 10-year strategy. We are out and about talking to people – our staff, colleagues, partners, stakeholders, and audiences. We welcome your thoughts on our future direction and what we can do together.

Engaging our audiences

Te Papa's exhibitions and events continued to engage our audiences, with visitor satisfaction at an overwhelming 97 percent. Even in challenging economic times, we attracted diverse national and international audiences. More than 1.3 million visitors came through our doors – 100,000 fewer than last year but still a strong result given the drop in visitor numbers to Wellington. When we include our touring exhibitions, visitation reached almost 2.2 million – an increase of 170,000 on last year. A key contributor was *Whales / Tohorā*, which continued its stellar tour of North America, attracting almost 500,000 visitors.

Virtual visitation was also high, with our website receiving 3.3 million visits, including 1.8 million to Collections Online. Te Papa continues to be a top destination for schools and tertiary institutions. Students participated in almost 700 educator-led programmes and eight school outreach projects.

On the floor – exhibitions and events

Four exceptional short-term exhibitions attracted many visitors to Te Papa – *Paperskin: The art of tapa cloth*, *European Masters: 19th–20th century art from the Städel Museum*, *Brian Brake: Lens on the world*, and *E Tū Ake: Standing Strong*. These exhibitions also strengthened Te Papa's relationships with other cultural institutions. *Paperskin* was developed in partnership with the Queensland Art Gallery, and *European Masters* toured from the Städel Museum, Germany, in association with the National Gallery of Victoria, Australia. *Brian Brake* and *E Tū Ake* were developed here at Te Papa, and both are now touring – *E Tū Ake* to the musée du quai Branly in France, and *Brian Brake* to New Zealand's main centres.

Smaller-scale but equally popular exhibitions demonstrated the richness of our collections and breadth of our programming. We showcased textiles in *Enriching Fashion* and *New Zealand in Vogue*, 19th-century travel photography in *Faraway Places*, taonga Māori in *Matau: Traditional hooks, innovative designs*, contemporary art in *Collecting Contemporary*, and historical German and French prints in *Changing Impressions*.

Te Papa staff are exploring how we can record and tell the story of the Canterbury earthquakes in collaboration with local people and institutions. We are also seeking to share the lessons learned with all New Zealanders, using our national reach and resources.

Beyond our walls – increasing access to our collections

Nearly 4,000 loans and an extensive national touring programme increased New Zealanders' access to our collections. Seven Te Papa exhibitions toured to regions across the country, from Southland to Northland. On the road were artworks by Rita Angus, Germany's Albrecht Dürer, British landscape painters Constable and Turner, and more. *Treaty 2U* and *Mō Tātou: The Ngāi Tahu Whānui Exhibition* also toured.

In partnership with TVNZ and funded by Vero, we created 20 fascinating new episodes of the mini-documentary series *Tales from Te Papa*, increasing access to our collections. An exciting resource for schools was developed from this series, thanks to partners Vero and TVNZ.

Natural environment researchers discovered new species in ancient lakebeds in Central Otago and in the waters off Kaikoura and the Kermadec Islands, which our collection managers carefully catalogued and stored. We were thrilled to purchase *Poedua* by John Webber, and conservators have been working to bring the painting back to its original glory.

Te Papa Press had another outstanding year, publishing stunning books connected with the exhibitions *Brian Brake* and *E Tū Ake*, along with others on New Zealand art, Pacific art, Cook Islands tivaivai (quilts), and taonga Māori, and the scholarly journal *Tuhinga*. Congratulations to two Te Papa authors who were finalists in the New Zealand Post Book Awards 'Illustrated Non-Fiction' section: Athol McCredie, Curator of Photography, for *Brian Brake* (Te Papa Press) and Claire Regnault, Senior Curator of History, for *The Dress Circle* (Random House).

Coming home

This year, Te Papa brought many sacred kōiwi/kōimi tangata (ancestral remains) home from Lund University, Sweden; Oslo University, Norway; Rouen Museum, France; and two museums in Frankfurt, Germany – the Frankfurt Museum of World Cultures and the Senckenburg Museum.

During this period Te Papa also returned the sacred remains of a tupuna (ancestor) to the iwi of Waiuku, Ngāti Te Ata. This tupuna was respectfully repatriated from the School of Surgeons in London, England in November 2007.

We are deeply grateful to the institutions and individuals who have made this possible. We have found that the process of discussion and negotiation around repatriation creates a strong and enduring connection with other museums, as they develop a greater understanding of Māori culture and tikanga (custom and traditions).

Acknowledging our supporters

As we review our values and redefine our vision for the next 10 years, we are reminded that Te Papa's people are the key to everything we do. To our sponsors, iwi partners, government, Friends of Te Papa, the Board, our staff, and all the community groups and individuals who visit the Museum or contribute in some way, our warmest thanks.



Michael Houlihan

Chief Executive



Michelle Hippolite

Kaihautū

He tirohanga ki ngā whakatutukitanga: Performance at a glance

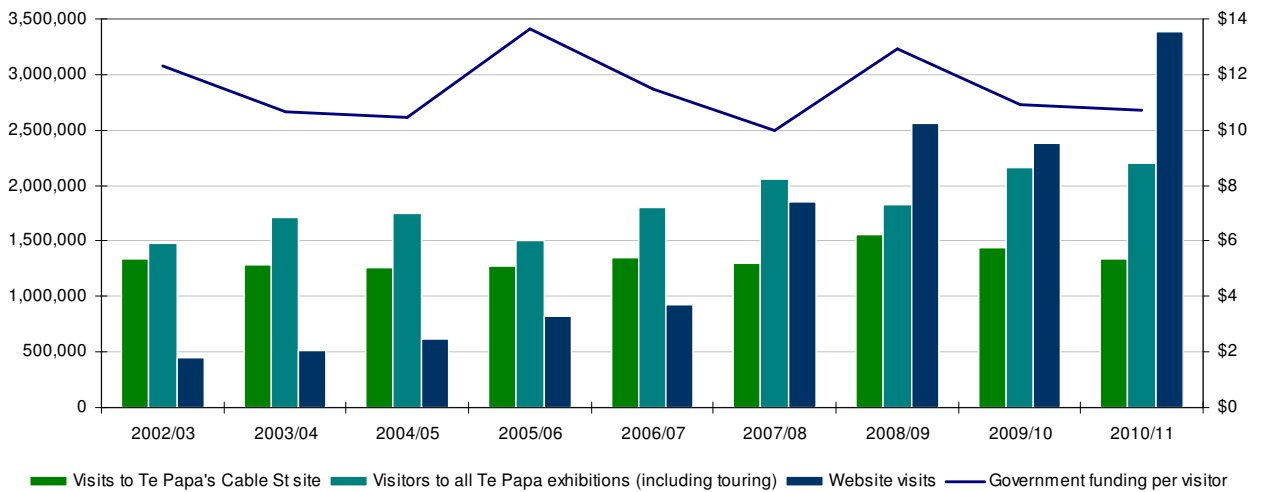
	2010/11 Actual	2010/11 Projected	2009/10 Actual
Audience			
Number of visits to Te Papa	1,334,712	1,400,000	1,440,397
Measured visits to Te Papa exhibitions in New Zealand ¹	61,849	-	64,188
Measured visits to Te Papa exhibitions at international venues ²	217,929	-	172,252
Total measured number of visits to Te Papa exhibitions	1,616,815	-	1,676,837
Total measured and estimated visits to Te Papa exhibitions	2,197,055	-	2,164,672
Number of visits to http://www.tepapa.govt.nz	3,383,512	2,500,000	2,380,804
Financial			
\$000	2011 Actual	2011 Budget	2010 Actual
Total operating revenue	45,910	47,905	46,890
Crown revenue	23,574	23,574	23,574
Commercial revenue (gross)	12,235	13,397	12,364
Sponsorship	4,363	4,234	4,278
Cost of services	45,808	48,689	46,123
Operating surplus (deficit)	594	(784)	1,439
Depreciation	12,928	12,410	13,398
Net surplus (deficit)	(12,334)	(13,194)	(11,959)
Working capital	17,898	14,978	17,343
Collection value	776,455	624,515	725,939
Net assets	1,153,744	1,016,847	1,123,264
Commercial revenue as % of total revenue	48.6%	50%	50%

Notes:

1. 2010/11 measured visits are only included where venues have official visitor counting systems or have sampling methods approved by Te Papa. This figure does not include the 368,240 estimated additional visitors to domestic touring exhibitions. Estimated domestic visitors in 2009/10 were 371,753.

2. 2010/11 measured visits are only included where venues have official visitor counting systems or have sampling methods approved by Te Papa. This figure does not include the estimated 212,000 people who visited *Whales | Tohorā* at the Ontario Science Centre.

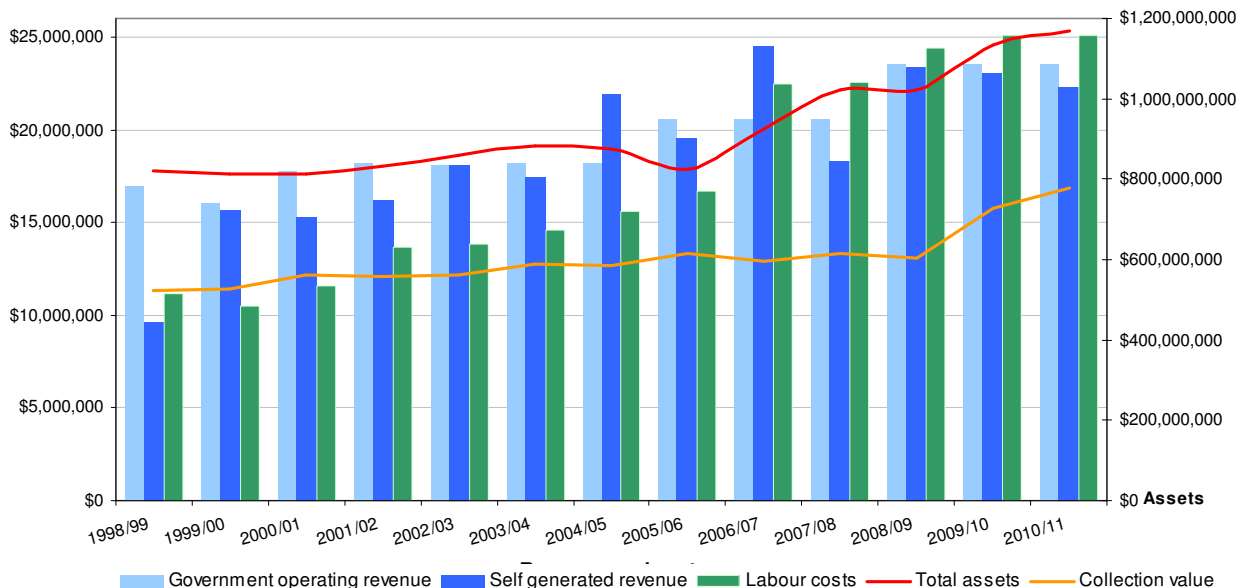
Visitor numbers 2002-2011



The chart above shows changing visitation trends over the last nine years, combined with the cost to government of each visitor. Visits to the Cable Street site have remained consistently high, with an average of 1.3 million visitors per year over the period. Visits to touring exhibitions in New Zealand and internationally have grown 4 percent each year, an overall increase of 49 percent over the period.

The number of people accessing Te Papa through the website and Collections Online increased enormously, reflecting society's increasing engagement with online knowledge. 2007/08 was the first year in which web visits exceeded physical visits. This was driven in part by webcasts of the colossal squid, and the trend has continued. The average cost to government per visitor over the period was \$11.40, low by international standards. Peaks in cost per visitor correspond with increases in government funding.

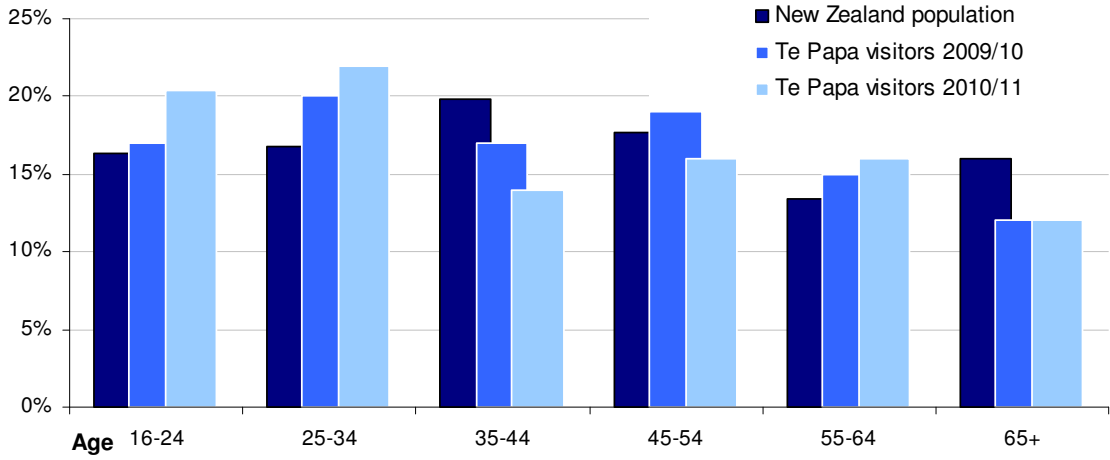
Revenue, expenditure and assets 1998-2011



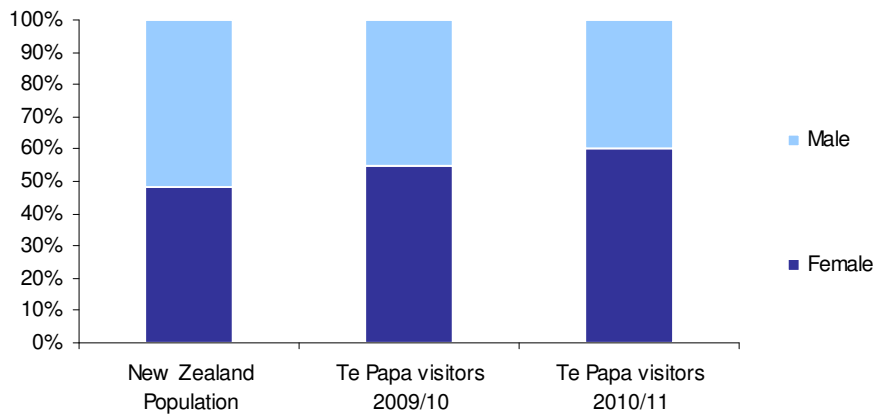
This chart shows trends in the balance between government funding and self-generated funding, patterns in labour costs, and the increase in collection value and assets overall.

Since Te Papa's opening in 1998, the total assets (buildings and collections) held by Te Papa for the nation has risen from \$520 million to \$1.168 million. The value of collections alone has risen from \$520 million to \$776 million over the same period.

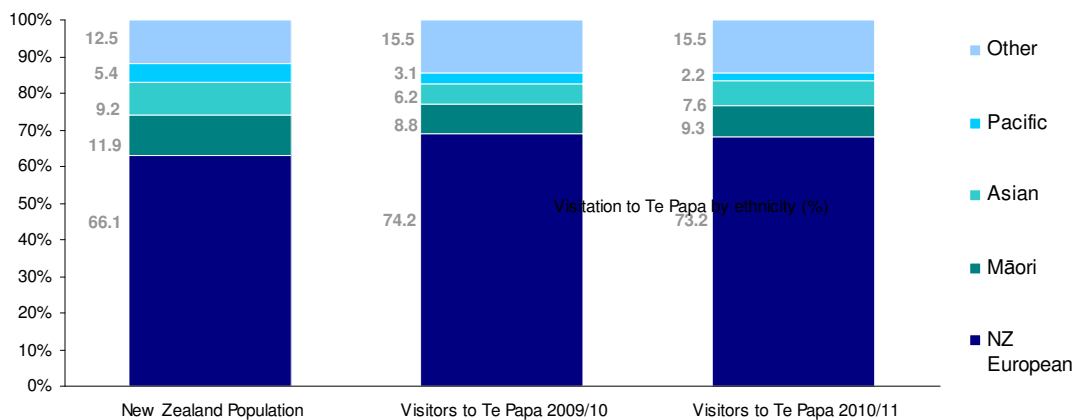
Te Papa visitors by age (16+ years)



Gender of Te Papa visitors



Ethnicity of Te Papa visitors (%)



All figures are for adult visitors (16+) from New Zealand. Gender profile was: Female 59.8% [vs 48.1% in pop], Male 40.1% [51.9%]. Age profile was 16-24 20.4% [vs 16% in pop], 25-34 22.3% [17%], 35-44 14.3% [20%], 45-54 15.5% [18%], 54-64 15.6% [13%], 65+ 11.6% [16%]. Ethnicity profile was: NZ European 67.9% [vs 66% in pop], Māori 8.6% [12%], Pacific Islander 2% [5%], Asian 7% [9%], other 14.3% [12%] Ethnicity data does not always add up to 100% as some people identify with more than one ethnic group.

Part 2: Museum of New Zealand Te Papa Tongarewa

Accountability and legislation

Te Papa was established by the Museum of New Zealand Te Papa Tongarewa Act 1992 and is an autonomous Crown entity under the Crown Entities Act 2004. Te Papa preserves, protects, acquires, researches, and provides access to collections that are part of New Zealand's artistic, cultural, and natural heritage. As the national museum, Te Papa takes a leadership role in coordinating and providing assistance to other organisations with shared goals.

Accountability

The Board must carry out its statutory functions using funds provided primarily, but not exclusively, by parliamentary appropriation through Vote Arts, Culture and Heritage. The Minister for Arts, Culture and Heritage is accountable to Parliament for the funding and performance of Te Papa and its obligations under the Crown Entities Act.

The Board's authority and accountability are based on three key documents:

- the Museum of New Zealand Te Papa Tongarewa Act 1992
- the Statement of Intent
- the Memorandum of Understanding between the Chair of the Board and the responsible Minister.

This annual report is the official record against targets and budgets set out in the 2010/11-2012/13 Statement of Intent.

Museum of New Zealand Te Papa Tongarewa Act 1992

The Museum of New Zealand Te Papa Tongarewa's purpose is defined by its Act:

... as a forum for the nation to present, explore, and preserve the heritage of its cultures and knowledge of the natural environment in order to better understand and treasure the past, enrich the present, and meet the challenges of the future.

The Act defines Te Papa's functions as to:

- collect works of art and items relating to history and the natural environment
- be an accessible national depository for collections of art and items relating to history and the natural environment
- develop, conserve and house securely the collections of art and items relating to history and the natural environment
- exhibit, or make available for exhibition by other public art galleries, museums, and allied organisations, such material from its collections as the Board determines
- conduct research into matters relating to the collections or associated areas of interest and to assist others in such research
- provide an education service in connection with its collections
- disseminate information relating to its collections, and to any other matters relating to the Museum and its functions
- co-operate with and assist other New Zealand museums in establishing a national service, and in providing appropriate support to other institutions and organisations holding objects or collections of national importance
- co-operate with other institutions and organisations having objectives similar to those of Te Papa
- make best use of the collections in the national interest
- design, construct, and commission any building or structure required by the Museum.

In performing its functions Te Papa must:

- have regard to the ethnic and cultural diversity of the people of New Zealand, and the contributions they have made and continue to make to New Zealand's cultural life and the fabric of New Zealand society
- endeavour to ensure both that the Museum expresses and recognises the mana and significance of Māori, European, and other major traditions and cultural heritages and that the Museum provides the means for every such culture to contribute effectively to the Museum as a statement of New Zealand's identity
- endeavour to ensure that the Museum is a source of pride for all New Zealanders.

Vision, outcomes, outputs, and performance measures

The relationship between the government's outcomes and Te Papa's outcomes and outputs is set out in the diagram below. As signalled in the current Statement of Intent, Te Papa's overarching and intermediate outcomes were changed to reflect our *Envisioning the Future* project during 2010/11. Te Papa will continue to refine its impacts over the remainder of 2011 and will report against these in the 2011/12 Annual Report.

Relationship of sector outcomes to annual outputs

Key activities contribute to achieving Te Papa's vision and also map to the culture and heritage sector's outcomes to *create, preserve, and engage*.

Te Papa's outcomes are to *preserve* and to *engage*. The primary services (outputs) we provide are exhibitions, events, education programme, and debates. People all over New Zealand and the world can enjoy and benefit from these services, whether they are in the Te Papa building in Wellington, visiting a touring exhibition in a regional or international centre, participating in an education video conference at a rural school, or tapping into online resources. In order to provide many of these services, Te Papa must continue building and caring for its collections, and developing knowledge around them to share with both general and specialised audiences.

During 2010/11, Te Papa contributed to all the sector medium-term outcomes and the sector goal through its outputs and intermediate outcomes. Performance against these is set out in the Statement of Service Performance on pages 23-30.

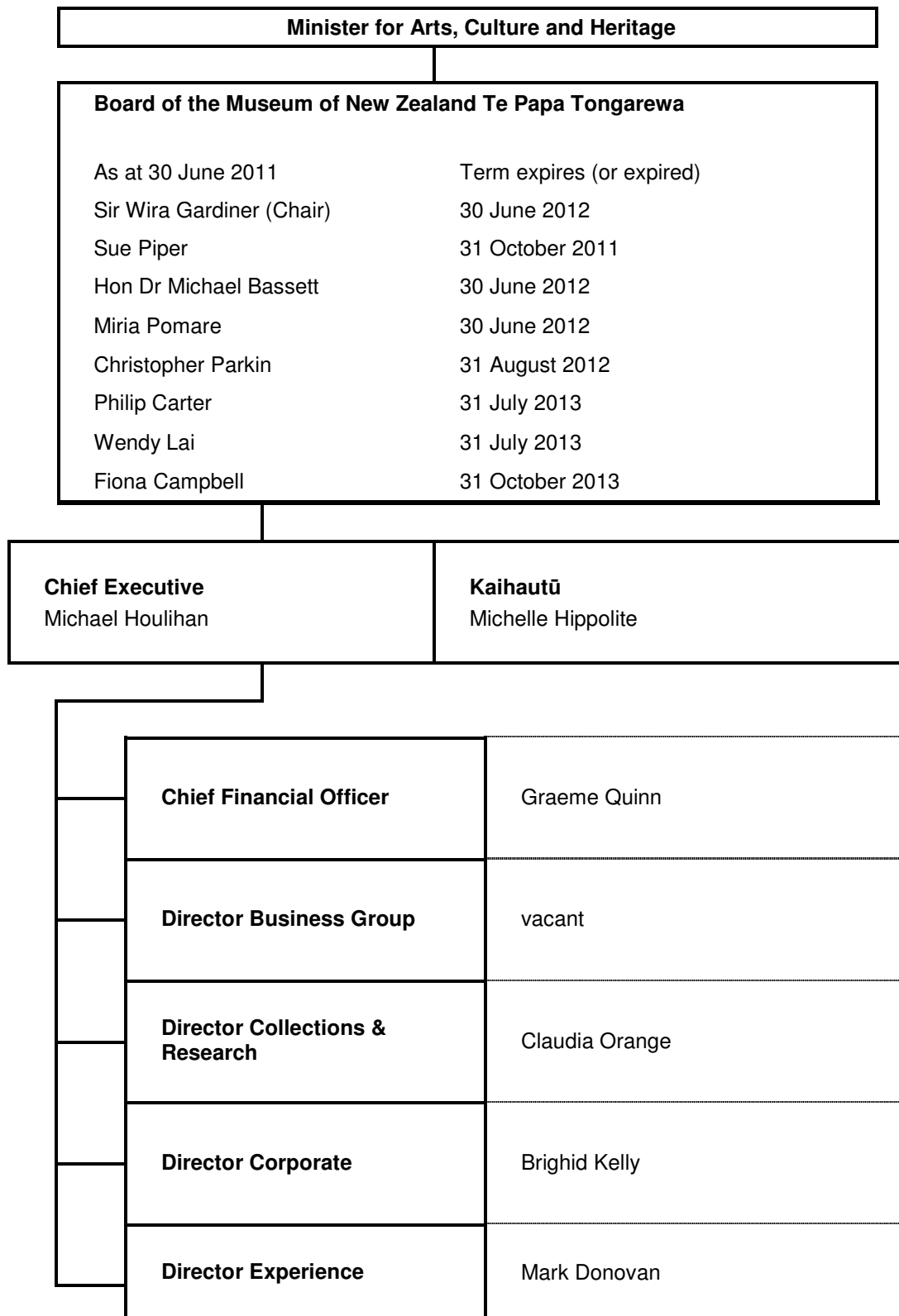
Alignment of Te Papa's outcomes and strategies, the sector's outcomes, and the Government's priorities

<p>Government's goal for the cultural sector</p>	<p>New Zealand's distinctive culture enriches our lives</p> <p><i>Connecting our taonga, our people, our place in the world</i></p>		
<p>Ministry for Culture and Heritage cultural sector outcomes</p>	<p>Cultural activity flourishes in New Zealand</p> <p>Create</p>	<p>Our culture and heritage can be enjoyed by future generations</p> <p>Preserve</p>	<p>Engagement in cultural activities is increasing</p> <p>Engage</p>
<p>Te Papa vision</p>	<p>Changing Hearts, Changing Minds, Changing Lives</p>		
<p>Te Papa outcomes</p>	<p>Engage</p> <p>New Zealanders and international audiences will engage with Te Papa through Te Papa's research, events, education programmes, and exhibitions in many locations and online.</p>		<p>Preserve</p> <p>Te Papa's collections will be developed and cared for to the highest possible standards so future generations of New Zealanders can enjoy and learn from them. Relevant communities and individuals will be involved in management of the collections, and will contribute to knowledge about collections. Research on collections will be undertaken and shared.</p>
<p>Te Papa strategies</p>	<p>Accessing all areas Te Papa will share its collections, skills and knowledge with the diverse communities across Aotearoa New Zealand and overseas.</p> <p>Being a forum for the future As a cultural and intellectual leader, Te Papa will signpost pathways to the future by initiating, hosting and engaging in debates that explore a wide range of contemporary issues.</p> <p>Housing the treasures Taonga (treasures), within the guardianship of Te Papa will be at the heart of the Museum's activities.</p> <p>Connecting with people Te Papa will make learning an engaging and entertaining experience. Te Papa will set the highest possible standards for an integrated and welcoming experience.</p> <p>Saving the planet Te Papa will engage and excite by conducting leading edge research and by communicating and modelling environmentally responsible practices that are smart, accessible, and inspiring.</p> <p>Mana taonga Sharing authority Te Papa will share decision-making with iwi (tribes), communities, and individuals with respect to managing and understanding their taonga (treasures).</p>		

Governance and management

Organisational structure

This diagram sets out Te Papa's governance and leadership structure as at 30 June 2011.



Governance at Te Papa

The Board is responsible for the organisation's overall performance in accordance with relevant statutes and the parameters established with the responsible Minister. The Act specifies Te Papa's functions and the matters that must be taken into account when performing these functions. The Board takes an active role in ensuring that Te Papa responds to changes in the legislative or regulatory environment in a timely way, as well as monitoring and acting on changes in governance practices.

Board committees

The full Board considers matters relating to appointments and remuneration. An Audit Committee (renamed the Assurance and Risk Committee in October 2008) was established during 2007/08. During 2010/2011, the Assurance and Risk Committee had the following members:

Sue Piper (Chair)
Sir Wira Gardiner
Christopher Parkin
Grant Taylor (external appointment)

Board meetings

Six Board meetings were held during the 2010/11 year.

Governance philosophy

Principles for corporate governance

The Board has formally adopted nine principles of corporate governance articulated by the Securities Commission. These principles apply to entities that have economic impact in New Zealand or are accountable, in various ways, to the public.¹

Bicultural policy

Te Papa is a bicultural organisation, and as such, the Board acknowledges the importance of the Treaty of Waitangi, particularly the partnership implicit in the Treaty. The Board endorses the principle of a single Board that includes representation of both tangata whenua and tangata tiriti to govern the Museum.² The Board has a formal bicultural policy which states that:

Biculturalism at Te Papa is the partnership between Tangata Whenua and Tangata Tiriti recognising the legislative, conceptual, and Treaty framework within which the Museum operates as well as reflecting international developments. This framework provides the mandate for the Museum to express and celebrate the natural and cultural diversity of New Zealand. It acknowledges the unique position of Māori in Aotearoa New Zealand and the need to secure their participation in the governance, management, and operation of the Museum of New Zealand Te Papa Tongarewa.

Code of conduct

Te Papa has a code of professional conduct that applies to all employees, contractors, consultants, associates, and volunteers. The code is also consistent with the *Code of Ethics for Governing Bodies of Museums and Museum Staff* issued by Museums Aotearoa.

Conflicts of interest

Conflicts of interest are actively managed to ensure the Board's business is carried out in an open, frank, and impartial manner to produce the best result for Te Papa. Board members provide an

¹ *Corporate Governance in New Zealand Principles and Guidelines* (February 2004), Securities Commission New Zealand.

² Where tangata whenua refers to those who belong to the land by right of first discovery and tangata tiriti refers to those who belong to the land by right of the Treaty of Waitangi, Te Tiriti o Waitangi.

annual declaration of interests and are required to advise any changes to their declaration of interests as they occur. Te Papa maintains an 'interest register', which is updated regularly. Related party transactions are disclosed in the Notes to the Financial Statements (refer to note 21).

Risk management

The Board acknowledges its responsibility for the management of risks to Te Papa. The Board has delegated responsibility for the operation of a risk management programme to the Chief Executive. The Board monitors risk management issues through the Audit and Risk Committee and management reporting.

Legislative and regulatory compliance

The Board has delegated to the Chief Executive its responsibility to ensure Te Papa complies with all relevant legislative requirements.

Indemnities and insurance

Te Papa holds insurance policies covering directors, officers, and statutory liability.

Capability – people, process, and technology

Envisioning the Future

During the 2010/11 year, Te Papa embarked on a major planning exercise to refresh its strategic vision and direction, and to develop a 10-year strategy. The new strategy and programmes of activity will be set out in the 2012/13, 2013/13 and 2014/15 Statement of Intent.

Values

The first step in the *Envisioning the Future* process was reassessing Te Papa's core values to ensure they capture what is important to us. Our values describe what we stand for and how we will work together. When we live up to them, we show leadership, enhance the mana of the Museum of New Zealand Te Papa Tongarewa, and manifest the mana of the land and its people. Te Papa is a bicultural organisation operating within a dynamic, pluralist society. All Te Papa's outputs are informed by its commitment to biculturalism, whilst acknowledging the value and significance of all the cultures of Aotearoa New Zealand.

Te Papa has confirmed its values as:

Mātauranga | Knowledge & learning – we actively seek and share knowledge, value intellectual rigour, learn from our experiences and mistakes, and promote questioning and debate among ourselves and our communities.

Whanaungatanga | Relationships – caring for each other: we work collaboratively with colleagues, both internally and externally, respecting and honouring each other's mana (integrity), expertise, and perspectives.

Kaitiakitanga | Guardianship – caring for our collections: we care for and promote access to our collections, acknowledging that we hold them in trust for all New Zealanders and nourishing the whakapapa relationships between taonga and their communities.

Manaakitanga | Community responsibility – caring for our communities: we welcome, include, inspire, respond to, and collaborate with our communities, championing the importance of culture, heritage, and natural history.

Hiranga | Excellence – we aspire to be first-class, professional, innovative, ground-breaking, relevant, engaging, and commercially successful.

In the 2010/11, 2012/12 and 2012/13 Statement of Intent, Te Papa outlined its key initiatives and objectives in the areas of capability. The re-visioning of Te Papa's strategic direction is central to building this capability and will ensure Te Papa continues to provide a world class museum experience. The *Envisioning the Future* project recognises the importance of and is addressing all the matters below:

- high-performing organisational culture
- scholarship
- management development
- information and communications technology

Specific areas of focus for 2010/11 were:

Project management and procurement

A standard project management methodology has been developed and is being rolled out across Te Papa. This has improved the effectiveness and efficiency of project delivery. Procurement practices have been a focus for improvement over the period. Improvements will continue to be embedded over the next financial year.

Capital asset management

Te Papa has reviewed its asset management capabilities and is implementing changes in the process and resources to improve its ability to sustainably manage assets. The Capital Asset Management Plan will be completed in the next financial year.

Workforce profile and equal employment opportunities

Te Papa is committed to the principle and practice of equal employment opportunities in the recruitment, employment, training, and promotion of employees. It is also committed to the identification and elimination of barriers that cause or perpetuate inequality in employment opportunities. A key focus is on improving the ability of employees to meet the needs of our diverse visitor base through increasing cultural and disability capability, especially for front of house employees. Another key focus for the coming year will be to improve the quality of the data we hold.

Te Papa's workforce profile

Employment status	Full time (headcount)	Part time* (headcount)	Headcount	FTE (Full time equivalent)
Permanent	306	37	343	321
Fixed term	24	7	31	27
Casual			145	
Total			519	348

*Less than 30 hours per week

Age	The average age of Te Papa's workforce is 37.8 years — younger than the national and public sector average — with the age range between fifteen to eighty years. Eighteen percent of employees did not state their age.
Ethnicity	There are significant gaps in Te Papa's ethnicity data, with 38 percent of employees not stating their ethnicity. This will be one of our target areas for the coming year, along with improving our collection of data around age and disability.
Disability	No statistical data has been collected on disability, although Te Papa does have employees with disabilities.
Gender	The majority of Te Papa's workforce is women. Fifty-nine percent of employees, 54 percent of Te Papa's managers and 50 percent of the senior leadership team are women.

Te Papa as a good employer

Te Papa's activities against the seven key elements of being a good employer are summarised below.

Element	Te Papa activity
Leadership, accountability, and culture	<ul style="list-style-type: none"> Employee focus groups resulted in the reaffirmation of whanaungatanga (relationships) and manaakitanga (community responsibility) as core Te Papa values Core Te Papa values identified and values workshops held with all employees to embed into work practice
Recruitment, selection, and induction	<ul style="list-style-type: none"> Robust merit-based recruitment and selection processes Delivery of the employer brand using innovative advertising channels to attract diverse applicants Profiles of employees from diverse backgrounds promoted on the Te Papa website and blog pages
Employee development, promotion, and exit	<ul style="list-style-type: none"> Te Papa orientation and job-specific induction for all staff Personal development opportunities for all staff Range of secondment opportunities available Cultural training programmes, including te reo (Māori) lessons and waiata (song) practice, available to all staff Exit surveys provide good employee feedback
Flexibility and work design	<ul style="list-style-type: none"> Organisation-wide flexible working programme in place Baby-changing and breast-feeding facilities available on site School holiday programme run on site for children of employees Kindergarten on site, with priority for places given to Te Papa staff
Remuneration, recognition, and conditions	<ul style="list-style-type: none"> Initiatives to recognise high performers Transparent, equitable, and gender-neutral job evaluation practices Domestic leave available in addition to sick leave 20 days paid parental leave available to qualifying staff
Harassment and bullying prevention	<ul style="list-style-type: none"> Comprehensive anti-harassment policy and process in place Employee code of conduct and relevant policies regularly reviewed and available at all times
Safe and healthy environment	<ul style="list-style-type: none"> Strong focus on employee health, safety and wellbeing through provision of support services including: <ul style="list-style-type: none"> employee assistance programme (EAP) ergonomic workstation assessments and other health monitoring and prevention initiative health and safety policy in place with active Health and Safety Committee regular health and safety training opportunities

Independent Auditor's Report

**To the readers of
Museum of New Zealand Te Papa Tongarewa's
financial statements and statement of service performance
for the year ended 30 June 2011**

The Auditor-General is the auditor of The Museum of New Zealand Te Papa Tongarewa (Te Papa). The Auditor-General has appointed me, Clare Helm, using the staff and resources of Audit New Zealand, to carry out the audit of the financial statements and statement of service performance of Te Papa on her behalf.

We have audited:

- the financial statements of Te Papa on pages 31-64 that comprise the statement of financial position as at 30 June 2011, the statement of comprehensive income, statement of changes in equity and statement of cash flows for the year ended on that date and notes to the financial statements that include accounting policies and other explanatory information; and
- the statement of service performance of Te Papa on pages 24-30.

Opinion

In our opinion:

- the financial statements of Te Papa on pages 31-64
 - comply with generally accepted accounting practice in New Zealand; and
 - fairly reflect Te Papa's:
 - financial position as at 30 June 2011; and
 - financial performance and cash flows for the year ended on that date.
- the statement of service performance of Te Papa on pages 24-30
 - complies with generally accepted accounting practice in New Zealand; and
 - fairly reflects, for each class of outputs for the year ended 30 June 2011, Te Papa's
 - service performance compared with the forecasts in the statement of forecast service performance for the financial year; and
 - actual revenue and output expenses compared with the forecasts in the statement of

forecast service performance at the start of the financial year.

Our audit was completed on 31 October 2011. This is the date at which our opinion is expressed.

The basis of our opinion is explained below. In addition, we outline the responsibilities of the Board and our responsibilities, and we explain our independence.

Basis of opinion

We carried out our audit in accordance with the Auditor-General's Auditing Standards, which incorporate the International Standards on Auditing (New Zealand). Those standards require that we comply with ethical requirements and plan and carry out our audit to obtain reasonable assurance about whether the financial statements and statement of service performance are free from material misstatement.

Material misstatements are differences or omissions of amounts and disclosures that would affect a reader's overall understanding of the financial statements and statement of service performance. If we had found material misstatements that were not corrected, we would have referred to them in our opinion.

An audit involves carrying out procedures to obtain audit evidence about the amounts and disclosures in the financial statements and statement of service performance. The procedures selected depend on our judgement, including our assessment of risks of material misstatement of the financial statements and statement of service performance, whether due to fraud or error. In making those risk assessments, we consider internal control relevant to the Te Papa's preparation of the financial statements and statement of service performance that fairly reflect the matters to which they relate. We consider internal control in order to design audit procedures that are appropriate in the circumstances but not for the purpose of expressing an opinion on the effectiveness of Te Papa's internal control.

An audit also involves evaluating:

- the appropriateness of accounting policies used and whether they have been consistently applied;
- the reasonableness of the significant accounting estimates and judgements made by the Board;

- the adequacy of all disclosures in the financial statements and statement of service performance; and
- the overall presentation of the financial statements and statement of service performance.

We did not examine every transaction, nor do we guarantee complete accuracy of the financial statements and statement of service performance. We have obtained all the information and explanations we have required and we believe we have obtained sufficient and appropriate audit evidence to provide a basis for our audit opinion.

Responsibilities of the Board

The Board is responsible for preparing financial statements and a statement of service performance that:

- comply with generally accepted accounting practice in New Zealand;
- fairly reflect Te Papa's financial position, financial performance and cash flows; and
- fairly reflect its service performance.

The Board is also responsible for such internal control as is determined necessary to enable the preparation of financial statements and a statement of service performance that are free from material misstatement, whether due to fraud or error.

The Board's responsibilities arise from the Crown Entities Act 2004 and the Museum of New Zealand Te Papa Tongarewa Act 1992.

Responsibilities of the Auditor

We are responsible for expressing an independent opinion on the financial statements and statement of service performance and reporting that opinion to you based on our audit. Our responsibility arises from section 15 of the Public Audit Act 2001 and the Crown Entities Act 2004.

Independence

When carrying out the audit, we followed the independence requirements of the Auditor-General, which incorporate the independence requirements of the New Zealand Institute of Chartered Accountants.

Other than the audit, we have no relationship with or interests in Te Papa.



Clare Helm

Audit New Zealand

On behalf of the Auditor-General

Wellington, New Zealand

Matters relating to the electronic presentation of the audited financial statements and statement of service performance

This audit report relates to the financial statements and statement of service performance of Museum of New Zealand Te Papa Tongarewa for the year ended 30 June 2011 included on the Museum of New Zealand Te Papa Tongarewa's website. The Board is responsible for the maintenance and integrity of the Museum of New Zealand Te Papa Tongarewa's website. We have not been engaged to report on the integrity of the Museum of New Zealand Te Papa Tongarewa's website. We accept no responsibility for any changes that may have occurred to the financial statements and statement of service performance since they were initially presented on the website.

The audit report refers only to the financial statements and statement of service performance named above. It does not provide an opinion on any other information which may have been hyperlinked to or from the financial statements and statement of service performance. If readers of this report are concerned with the inherent risks arising from electronic data communication they should refer to the published hard copy of the audited financial statements and statement of service performance as well as the related audit report dated 31 October 2011 to confirm the information included in the audited financial statements and statement of service performance presented on this website.

Legislation in New Zealand governing the preparation and dissemination of financial information may differ from legislation in other jurisdictions.

Statement of Responsibility

The Board and management are responsible for the preparation of the annual financial statements and statement of service performance and the judgements used therein.

The Board and management are responsible for establishing and maintaining a system of internal controls designed to provide reasonable assurance of the integrity and reliability of the financial statements and statement of service performance.

In the opinion of the Board and management, the annual financial statements and statement of service performance for the year ended 30 June 2011 fairly reflect the financial position and operations of the Museum of New Zealand Te Papa Tongarewa.

A handwritten signature in black ink, consisting of a series of loops and a long horizontal stroke extending to the right.

Sir Wira Gardiner, Chairman
31 October 2011

A handwritten signature in black ink, featuring a large, stylized 'S' followed by several smaller, connected loops.

Sue Piper, Board member
31 October 2011

Part 3: Te Tauāki o ngā Paearu Ratonga me te Putea – Statement of Service Performance and Financial Statements

Statement of Service Performance results

Results against targets for 2010/11 are excellent, with the majority met or exceeded. Some challenging targets relating to visitor numbers and commercial revenue were partially achieved. There are some excellent results, particularly relating to Te Papa providing access to its collections and expertise around the country. Many targets in this area were exceeded, including numbers of publications (Te Papa Press, articles and conference presentations), the number and reach of Te Papa's touring exhibitions, as well as the support provided to iwi, museums, and galleries through National Services Te Paerangi. It was pleasing to see that the measure relating to visitors reporting an increased understanding of New Zealand as a result of their visit was exceeded this year, in part due to the strong New Zealand focus of exhibitions *Brian Brake: Lens on the world*, *Slice of Heaven: 20th Century Aotearoa*, and *E Tū Ake: Standing Strong*.

As already noted, it has been a challenging year for Te Papa. Lower visitation to Te Papa's Cable Street site impacted on several measures, and the majority of measures partially achieved can be attributed to flow on effects from lower visitation. International arrivals to Wellington were lower than usual, and the impact of the recession has affected domestic tourism and spending as well. Visitor numbers to Te Papa were partially achieved, with 95% of the targeted 1.4 million visitors achieved: of these, 36% (rather than the targeted 40%) were from overseas. Overseas visitors traditionally spend more than visitors from New Zealand, and the revenue target of 50% of revenue generated from non-government sources was missed by a small margin.

While visitor numbers to the Cable Street site were lower than projected, visitor satisfaction was very high, and an exciting range of new short-term exhibitions were presented. The number of people attending Te Papa exhibitions at other galleries, and accessing collections and information online, continues to grow. Demand for loans, education programmes, and National Services expertise and advice remains high. These results affirm the feedback from *Envisioning the Future* consultation and we are exploring how Te Papa can best meet the needs of its diverse communities. The results of *Envisioning the Future* and a new 10-year strategy will be set out in the 2012/13, 2013/14 and 2014/15 Statement of Intent.

Full results against the 2010/11, 2011/12, and 2012/13 Statement of Intent targets are set out below.

Statement of Service Performance target	2010/11 target	2010/11 result	2009/10 result
Intermediate Outcome 1: New Zealand's place in the world is better understood through exhibitions, programmes and resources provided by Te Papa			
Visitation to Te Papa Cable Street per year to indicate the quality of the museum experience	1,400,000	Not achieved 1,334,712	Achieved 1,440,397
Adult visitors from overseas to increase understanding of New Zealand	562,500	Not achieved 490,407 (36.7% of all visitors) visitors from overseas	Not achieved 549,969 (38.1%) visitors from overseas
Adult domestic visitors from outside the Wellington region to demonstrate coverage of audience	314,000	Achieved 355,954 (26.6% of all visitors) domestic visitors from outside Wellington	Achieved 392,123 (27.2%) domestic visitors from outside Wellington
Short term exhibitions presented to increase understanding of New Zealand's place in the world	8	Achieved 9 short term exhibitions - <i>Enriching Fashion, Brian Brake, European Masters, Fish Hooks, E Tu Ake, Faraway Places, Changing Impressions, Collecting Contemporary, New Zealand in Vogue</i> opened during the period	Achieved 12 short-term exhibitions presented
Percentage of adult visitors reporting a satisfaction rating of 'good' to 'excellent' to measure quality of the visitor experience	95%	Achieved 97% satisfaction rating achieved	Achieved 97% satisfaction rating achieved
Percentage of adult domestic visitors indicating they have learned something new about New Zealand during their visit to increase understanding	75%	Achieved 81.0% of visitors indicated enhanced awareness or understanding	Not achieved 69% of visitors indicated enhanced awareness or understanding
Percentage of teachers who rate education programmes as 'good' to 'excellent'	95%	Achieved 98% of respondents rated the programmes as good or excellent	Achieved 97.6% of respondents rated the programmes as good or excellent

Statement of Service Performance target	2010/11 target	2010/11 result	2009/10 result
Educator-led programmes and Discovery Centre National School Outreach Projects delivered	600	Achieved 695 educator programmes and 8 outreach projects	Achieved 690 programmes and 6 outreach projects
Long term exhibitions opened to increase understanding of New Zealand's place in the world	1 in 2010	Achieved <i>Slice of Heaven: 20th Century Aotearoa</i> opened on 2 October 2010.	Achieved Planning completed in 2009/10 to ensure <i>Slice of Heaven: 20th Century Aotearoa</i> opened on 2 October 2010.
Intermediate Outcome 2: A diverse and geographically spread audience benefits from access to Te Papa's collections and knowledge			
Quality of care and preservation of the National Collection demonstrated by no losses or damage caused as a result of handling by staff	0	Not achieved Damage discovered to glass negative plate.	Not Achieved 1 (losses on the shaft of a huia feather caused by movement of pounamu items stored in the same container)
Major publications by Te Papa Press for specialist and non-specialist audiences giving access to collections and knowledge	2	Achieved 12 publications - <i>Te Papa: Your Essential Guide</i> , <i>Brian Brake: Lens on the World</i> , <i>New Zealand Art: From Cook to Contemporary</i> , <i>Tivaivai: The Social Fabric of the Cook Islands</i> , the Te Papa Art Diary 2011, <i>Matariki Calendar</i> , <i>Taonga Māori in the British Museum</i> , <i>Museums and Māori: Heritage Professionals</i> , <i>Indigenous Collections</i> , <i>Current Practice</i> ; <i>E Tū Ake: Māori Standing Strong</i> ; <i>Pacific Art in Detail</i> and two editions of the scholarly journal; <i>Tuhinga</i> .	Achieved Three major publications published. <i>Tatau: Samoan Tattoo</i> , <i>New Zealand Art, Global Culture</i> ; <i>New Zealand Fashion Design</i> ; <i>Checklist of the Birds of New Zealand</i>

Statement of Service Performance target	2010/11 target	2010/11 result	2009/10 result
Number of peer reviewed papers and popular articles (as well as those including mātauranga Māori)	70	Achieved 102 (59 peer reviewed articles, 41 popular articles; 9 mātauranga Māori articles)	Achieved 80 (42 peer reviewed articles, 38 popular articles; 9 mātauranga Māori articles)
<ul style="list-style-type: none"> Peer reviewed to meet academic quality standards 	36	59	42
<ul style="list-style-type: none"> Popular to appeal to a diverse audience 	34	41	38
<ul style="list-style-type: none"> Papers that include mātauranga Māori contributing to a diverse audience 	8	9	9
Conference presentations delivered to a wide geographic audience	15	Achieved 39 presentations	Achieved 27 presentations
Visits to Collections Online indicating ease of access to collections and knowledge by a geographically spread and diverse audience	1,200,000	Achieved 1,794,652 visits	Achieved 1,201,877 visits
Percentage of items acquired in accordance with Te Papa policy and procedure to meet quality criteria	100%	Achieved 100%	Not Achieved 99% (Two breaches of policy in 2009/10)
National Collection preserved by minimal cases of irreparable damage occurring as a result of public access	<4	Achieved	Achieved One instance (small piece of a multi-component artwork stolen)
Intermediate Outcome 3: New Zealand's identity is enriched through relationships with iwi Māori			
Active relationships appropriately maintained with iwi or Maori organisations to contribute to the museum experience	30	Achieved 140 (a major iwi consultation process was carried out in August-September)	Total number of active relationships maintained in 2009/10 was 44. ³

³ Measure changed from 2009/10, which measured 'new relationships formed' rather than 'appropriately maintained'.

Statement of Service Performance target	2010/11 target	2010/11 result	2009/10 result
Repatriation from international institutions completed each year as part of relationships with iwi	5	Achieved Five international (Lund University Sweden on 29 April 2011; Frankfurt Museum of World Cultures on 3 May 2011; Senckenberg Museum on 3 May 2011; Oslo University on 5 May 2011; and Rouen Museum on 9 May 2011) and one domestic (Ngāti Te Ata in Waiuku) repatriation achieved.	Achieved Five international repatriations completed from 5 museums and institutions: National Museum Wales; Hunterian Museum (Scotland); Trinity College (Republic of Ireland); Gothenburg Natural History Museum (Sweden); Museum of World Culture (Sweden)
Overseas institutions formally consent to Te Papa's repatriation request each year	5	Achieved Five: Lund University, Stockholm, Sweden; Oslo University (Museum of Cultural History), Oslo, Norway; Rouen Museum, Rouen, France; Western Australian Museum, Perth, Australia; Quai Branly, Paris, France.	Achieved Five: University of Oslo (Norway); National Museum (Wales); Frankfurt Museum of World Cultures (Germany); Senckenburg Museum of Natural History (Germany); Wellcome Trust (UK)
Intermediate Outcome 4: Creativity and innovation in society is supported by Te Papa's programmes reflecting contemporary culture and trends			
The age, ethnicity and gender profile of domestic visitors is similar to the general population to demonstrate audience coverage	Achieved	Achieved⁴ All figures are for 16+ years Gender profile was: Female 59.8% [vs 48.1% in pop], Male 40.1% [51.9%]. Age profile was 16-24 20.4% [vs 16% in pop], 25-34 22.3% [17%], 35-44 14.3% [20%], 45-54 15.5%	Achieved All figures are for 16+ years Gender profile was: Female 55% [vs 48.1% in pop], Male 45% [51.9%] Age profile was 16-24 17% [vs 16% in pop], 25-34 20% [17%], 35-44 17% [20%], 45-54 19%

⁴ The measure of 'achieved' for this target is within the margin of error for the survey, which is 8%. This was achieved for ethnicity and age, but not for gender.

Statement of Service Performance target	2010/11 target	2010/11 result	2009/10 result
		[18%], 54-64 15.6% [13%], 65+ 11.6% [16%]. Ethnicity profile was: NZ European 67.9% [vs 66% in pop], Māori 8.6% [12%], Pacific Islander 2% [5%], Asian 7% [9%], other 14.3% [12%]	[18%], 55-64 15% [13%], 65+ 12% [16%] Ethnicity profile was: NZ European 74% [vs 66% in pop], Māori 9% [12%], Pacific Islander 3% [5%], Asian 6% [9%], other 15% [12%]
Visits to <i>OurSpace</i> to reflect new technologies and reach younger audiences	650,000	Not achieved 510,789	Achieved 618,459 visitors
Visits to the Te Papa website channel to meet contemporary culture and trends	2,500,000	Achieved 3,383,512 website visits	Not achieved 2,380,804 website visits (Target was 3 million)
Intermediate Outcome 5: New Zealand and overseas museums and art galleries benefit from access to support, expertise and collections from Te Papa			
Number of exhibitions toured to New Zealand venues to benefit New Zealand museums and galleries	6	Achieved 7 touring exhibitions - <i>Kupe Sites, Mō Tātou: The Ngāi Tahu Whānui Exhibition, Treaty 2U, Albrecht Dürer and 16th Century Printmaking, Rita Angus: Selected Works, Drawn from Italy: Mategna to Kauffmann, Painting the View: Constable, Turner and British Landscape Painters 1760- 1860</i>	Achieved 6 touring exhibitions <i>Treaty2U, Albrecht Dürer and 16th Century German Printmaking, Mō Tātou - The Ngāi Tahu Whānui -, Rita Angus: Life and Vision, Rembrandt - The Experimental Etcher, Kupe's Sites</i>

Statement of Service Performance target	2010/11 target	2010/11 result	2009/10 result
Number of regions Te Papa touring exhibitions visit to increase coverage	7	Achieved Touring exhibitions opened in 8 regions: <i>Rotorua, Southland, Canterbury, Otago, Bay of Plenty, Westland, Taranaki, Northland</i>	Achieved Touring exhibitions opened in 8 regions: <i>Gisborne, Nelson, Otago, Canterbury, Auckland, Bay of Plenty, Northland, and Wellington</i>
Number of international exhibitions toured every three years to benefit overseas museums and galleries	1	Achieved 1 exhibition touring internationally: <i>Whales / Tohorā</i>	Achieved 1 exhibition touring internationally: <i>Whales / Tohorā</i>
Museum Development Officer visits made by National Services to provide expertise to museums, galleries and iwi	140	Achieved 292 visits	Achieved 232 visits
Iwi Development Officer visits made to iwi/Māori organisations by National Services to provide expertise to museums, galleries and iwi	40	Achieved 96 visits	Achieved 76 visits
Workshops delivered by National Services Te Paerangi to support and provide expertise for museums, galleries and iwi	44	Achieved 45 workshops	Achieved 42 workshops (target was 40)
Targeted workshops by National Services to provide expertise in caring for taonga	15	Not achieved 13 workshops (Two workshops had to be postponed from June to July (2011/12 FY) due to tangihanga)	Achieved 16 workshops
Projects developed by National Services in partnership to support museums, galleries and iwi	45	Achieved 45 projects	Achieved 44 projects
Resources (hardcopy/virtual) developed by National Services to provide support and expertise for museums, galleries and iwi	20	Achieved 20 resources	Achieved 19 resources (target was 2)
Enquiries responded to by National Services (includes email, 0508, via website, enquiry centre) to ensure good support for museums galleries	600	Achieved 941 enquiries answered	Achieved 792 enquiries answered

Statement of Service Performance target	2010/11 target	2010/11 result	2009/10 result
and iwi			
Percentage of Te Papa's collection loans provided within the date agreed to ensure quality of service	100%	Achieved 100%	Achieved 100%
Intermediate Outcome 6: The visitor and stakeholder experience will be enhanced through Te Papa's business offerings			
Percentage of revenue is derived from non-Crown sources to enhance visitor experience	>50%	Not achieved 48.6%	Achieved 50.4%
Customer satisfaction levels in all commercial enterprises as part of quality of visitor experience (scale is from 1 to 11)	7.5/11	Achieved All outlets exceeded target satisfaction rating of 'at least 7.5 / 11'. Te Papa Store = 9.1, Te Papa Kids store = 8.6, Espresso = 8.2, Te Papa Café = 8.5	Achieved All outlets exceeded target satisfaction rating of 'at least 7.5 / 11'. Te Papa Store = 9.5, Te Papa Kids' Store = 9.4, Te Papa Espresso = 9.0, Te Papa Café = 8.6
Continued sponsorship of the exhibitions in the Level 4 short term gallery to support the quality of visitor experience	Achieved	Achieved	Achieved

Financial Statements for the year ended 30 June 2011

Output Costs

Output class costs 2010/2011	Actual \$000	Budget \$000	Variance \$000
Museum services output costs			
Operating	45,808	48,689	(2,881)
Capital	8,639	9,500	(861)
	54,447	58,189	(3,742)
Museum services funding			
Operating revenue	45,910	47,905	(1,995)
Capital contribution	9,000	9,000	-
	54,910	56,905	(1,995)

Output costs are made up of \$45.808 million operational expenditure (excluding depreciation) and capital expenditure and collection acquisitions of \$8.639 million. Output expenditure is funded by appropriations of \$23.574 million operating revenue and other revenue \$22.336 million (excluding donated assets).

Museum services are defined as controlling and maintaining a museum, developing collections and making those collections accessible, caring for the collections, creating exhibitions, conducting research into matters relating to the collections, providing education and information services, and providing national services in partnership with other museums.

Statement of Comprehensive Income
for the year ended 30 June 2011

	Notes	Actual 2011 \$000	Budget 2011 \$000	Actual 2010 \$000
Income				
Revenue from Crown	2	23,574	23,574	23,574
Interest income		1,172	1,038	886
Other revenue	3	21,086	23,293	22,312
Donated assets	13	492		672
Gains	4	78		118
Total income		46,402	47,905	47,562
Expenditure				
Personnel costs	5	25,060	25,882	25,050
Depreciation and amortisation expenses	11/12	12,928	12,410	13,398
Loss on disposal of fixed assets		4		49
Other expenses	6	20,744	22,807	21,024
Total expenditure		58,736	61,099	59,521
Surplus/(deficit)		(12,334)	(13,194)	(11,959)
Other comprehensive income				
Collection revaluation	13	45,659		103,124
PPE revaluation	11	(11,879)		
FX revaluation reserve	17	47		
Total other comprehensive income		33,827	0	103,124
Total comprehensive income		21,493	(13,194)	91,165

Explanations of significant variances against budget are detailed in note 28.

The accompanying notes form part of these financial statements.

Statement of Financial Position
as at 30 June 2011

	Note	Actual 2011 \$000	Budget 2011 \$000	Actual 2010 \$000
Assets				
Current assets				
Cash and cash equivalents	7	1,515	20,326	23,869
Short -term investments	7	21,550		
Debtors and other receivables	8	2,902	2,583	2,041
Prepayments		86	301	647
Inventories	9	1,243	1,299	1,218
Publications work in progress		259	133	145
Total current assets		27,555	24,642	27,920
Non-current assets				
Financial assets	10	205		142
Property, plant, and equipment	11	359,183	375,558	379,027
Collections	13	776,455	624,515	725,939
Intangible assets	12	493	1,968	1,191
Total non-current assets		1,136,336	1,002,041	1,106,299
Total assets		1,163,891	1,026,683	1,134,219
Liabilities				
Current liabilities				
Creditors and other payables	14	2,321	4,313	4,788
Derivative financial instruments	4			14
Revenue in advance	15	4,410	3,072	3,053
Employee entitlements	16	2,926	2,279	2,722
Total current liabilities		9,657	9,664	10,577
Non-current liabilities				
Employee entitlements	16	490	172	378
Total non-current liabilities		490	172	378
Total liabilities		10,147	9,836	10,955
Net assets		1,153,744	1,016,847	1,123,264
Equity				
General funds	17	447,898	447,898	438,898
Other reserves	17	705,846	568,949	684,366
Total equity		1,153,744	1,016,847	1,123,264

The accompanying notes form part of these financial statements.

Statement Of Changes In Equity
for the year ended 30 June 2011

	Note	Actual 2011 \$000	Budget 2011 \$000	Actual 2010 \$000
Balance at 1 July	17	1,123,264	1,021,041	1,023,099
Other reserve movements	17	(13)		
Capital contribution from the Crown	17	9,000	9,000	9,000
Total comprehensive income	17	21,493	(13,194)	91,165
Balance at 30 June		1,153,744	1,016,847	1,123,264

The accompanying notes form part of these financial statements.

Statement of Cash Flows
for the year ended 30 June 2011

	Note	Actual 2011 \$000	Budget 2011 \$000	Actual 2010 \$000
Cash flows from operating activities				
Receipts from Crown revenue		23,574	23,574	23,574
Interest received		1,138	848	851
Receipts from other revenue		21,616	23,483	22,069
Payments to suppliers		(22,333)	(24,121)	(20,311)
Payments to employees		(25,013)	(24,914)	(24,779)
Net cash from operating activities	18	(1,018)	(1,130)	1,404
Cash flows from investing activities				
Purchase of property, plant, and equipment		(4,412)	(6,500)	(4,796)
Purchase of collections		(4,368)	(3,000)	(3,628)
Purchase of intangible assets		(6)	(500)	(421)
Purchase of investments		(21,550)		
Net cash from investing activities		(30,336)	(10,000)	(8,845)
Cash flows from financing activities				
Capital contribution		9,000	9,000	9,000
Net cash from financing activities		9,000	9,000	9,000
Net(decrease)/increase in cash and cash equivalents		(22,354)	(2,130)	1,559
Cash and cash equivalents at the beginning of the year		23,869	22,456	22,310
Unrealised net foreign exchange losses		0	0	0
Cash and cash equivalents at the end of the year	7	1,515	20,326	23,869

The Goods and Services Tax (net) component of operating activities reflects the net GST paid and received with the Inland Revenue Department. The GST (net) component has been presented on a net basis, as the gross amounts do not provide meaningful information for the financial statement purposes.

The accompanying notes form part of these financial statements

Notes to the Financial Statements

1 Statement of Accounting Policies

Reporting Entity

The Museum of New Zealand Te Papa Tongarewa ("Te Papa") is a Crown entity as defined by the Crown Entities Act 2004 and is domiciled in New Zealand. As such, Te Papa's ultimate parent is the New Zealand Crown.

The Museum of New Zealand Te Papa Tongarewa Act 1992 sets out the principal functions of Te Papa's Board. These functions include controlling and maintaining a museum, developing collections and making those collections accessible, caring for the collections, creating exhibitions, conducting research into matters relating to the collections, providing education and information services, and providing national services in partnership with other museums.

In performing these functions, Te Papa must have regard to the ethnic and cultural diversity of the people of New Zealand, and the contributions they have made and continue to make to New Zealand's cultural life and the fabric of New Zealand society. Te Papa must also endeavour to ensure that the Museum is a source of pride for all New Zealanders.

Te Papa's mission states that "*the Museum of New Zealand Te Papa Tongarewa is a forum for the nation to present, explore, and preserve the heritage of its cultures and knowledge of the natural environment in order to better understand and treasure the past, enrich the present, and meet the challenges of the future.*"

Te Papa seeks to achieve successful financial outcomes and does this by offering experiences and products that contribute to the sustainability of the Museum.

Accordingly, Te Papa has designated itself as a public benefit entity for the purposes of New Zealand Equivalents to International Financial Reporting Standards ("NZ IFRS"). The financial statements for Te Papa are for the year ended 30 June 2011, and were approved by the Board on 31 October 2011.

Basis of preparation

Statement of Compliance

The financial statements of Te Papa have been prepared in accordance with the requirements of the Crown Entities Act 2004, which includes the requirement to comply with New Zealand generally accepted accounting practice ("NZ GAAP"). The financial statements comply with NZ IFRSs, and other applicable Financial Reporting Standards, as appropriate for public benefit entities. The accounting policies set out below have been applied consistently to all periods presented in these financial statements.

Measurement base

The financial statements have been prepared on a historical cost basis, except where modified by the revaluation of certain items of property, plant and equipment, and collections, and the measurement of equity investments and derivative financial instruments at fair value.

Functional and presentation currency

The financial statements are presented in New Zealand dollars and all values are rounded to the nearest thousand dollars (\$'000). The functional currency of Te Papa is New Zealand dollars.

Changes in Accounting Policy

There have been no changes in accounting policies during the financial year.

Early adopted amendments to standards

The following amendments to standards have been early adopted:

NZ IFRS 7 Financial Instruments: Disclosures – The effect of early adopting these amendments is the following information is no longer disclosed:

- The carrying amount of financial assets that would otherwise be past due or impaired whose terms have been renegotiated; and
- The maximum exposure to credit risk by class of financial instrument if the maximum credit risk exposure is best represented by their carrying amount.

NZ IAS 24 Related Party Disclosures (Revised 2009) – The effect of early adopting the revised NZ IAS 24 is:

- More information is required to be disclosed about transactions between Te Papa and entities controlled, jointly controlled, or significantly influenced by the Crown;
- Commitments with related parties require disclosure;
- Information is required to be disclosed about any related party transactions with Ministers of the Crown.

Standards, amendments, and interpretations issued but not yet effective that have not been early adopted, and which are relevant to Te Papa, are:

NZ IFRS 9 Financial Instruments will eventually replace NZ IAS 39 Financial Instruments: Recognition and Measurement. NZ IAS 39 is being replaced through the following 3 main phases: Phase 1 Classification and Measurement, Phase 2 Impairment Methodology, and Phase 3 Hedge Accounting.

Phase 1 on the classification and measurement of financial assets has been completed and has been published in the new financial instrument standard NZ IFRS 9. NZ IFRS 9 uses a single approach to determine whether a financial asset is measured at amortised cost or fair value, replacing the many different rules in NZ IAS 39. The approach in NZ IFRS 9 is based on how an entity manages its financial instruments (its business model) and the contractual cash flow characteristics of the financial assets. The new standard also requires a single impairment method to be used, replacing the many different impairment methods in NZ IAS 39.

The new standard is required to be adopted for the year ended 30 June 2014. Te Papa has not yet assessed the effect of the new standard and expects it will not be early adopted.

Use of accounting estimates and judgements

The preparation of financial statements requires the use of certain critical accounting estimates. It also requires the Board to exercise judgement in the application of the entity's accounting policies. Estimates and associated assumptions are based on historical experience and other factors, as appropriate to the particular circumstances. Areas involving a higher degree of judgement or complexity, or areas where assumptions and estimates are significant to the financial statements are disclosed under the applicable accounting policies below, and in the following notes, in particular;

Note 8: Debtors and receivables

Note 9: Inventories

Note 11: Property, Plant and Equipment

Note 12: Intangible Assets

Note 13: Collections

Note 16: Employee Entitlements

Note 19: Capital commitments and Operating leases

Non-government grants

Te Papa must exercise judgement when recognising grant income to determine if conditions of the grant contract have been satisfied. This judgement will be based on the facts and circumstances that are evident for each grant contract.

Significant Accounting Policies

Revenue

Revenue is measured at the fair value of consideration received or receivable.

Revenue from the Crown

Te Papa is partially funded through revenue received from the Crown, which is restricted in its uses for the purpose of Te Papa meeting its objectives as specified in the Statement of Intent.

Revenue from the Crown is recognised as revenue when earned and is reported in the financial period to which it relates.

Other grants

Non-government grants are recognised as revenue when they become receivable unless there is an obligation to return the funds if conditions of the grant are not met. If there is such an obligation the grants are initially recorded as grants received in advance, and recognised as revenue when conditions of the grant are satisfied.

Interest

Interest income is recognised using the effective interest method. Interest income on an impaired financial asset is recognised using the original effective interest rate.

Rental income

Lease receipts under an operating sub-lease are recognised as revenue on a straight-line basis over the lease term.

Sale of publications

Sales of publications are recognised when the product is sold to the customer.

Provision of services

Revenue derived through the provision of services to third parties is recognised in proportion to the stage of completion at the balance date. The stage of completion is assessed by reference to survey of work performed.

Vested assets

Where a physical asset is gifted to or acquired by Te Papa for nil or nominal cost, the fair value of the asset received is recognised as income. Such assets are recognised as income when control over the asset is obtained.

Restricted Reserves

Te Papa receives bequests from private individuals for collection acquisitions. Where they are discretionary they are recognised as revenue once received. Where the funds are subject to restrictions on use, such funds are identified as restricted reserves.

Cash and cash equivalents

Cash and cash equivalents include cash on hand, deposits held at call with domestic banks and other short-term, highly liquid investments, with original maturities of three months or less and which are subject to an insignificant risk in changes in value.

Financial Instruments

Debtors and other receivables

Debtors and other receivables are initially measured at fair value and subsequently measured at amortised cost using the effective interest rate method less any provision for impairment. A provision for impairment is established when objective evidence of collection is doubtful. When a debtor is considered uncollectible, it is written-off against the provision.

Financial assets at fair value through the surplus or deficit

Financial assets are recognised at fair value through the surplus or deficit. Purchases and sales of financial assets are recognised on trade-date, the date on which Te Papa commits to purchase or sell the asset. Financial assets are derecognised when the rights to receive cash flows from the financial assets have expired or have been transferred and Te Papa has transferred substantially all the risks and rewards of ownership. Te Papa classifies its financial assets as either fair value through the comprehensive income statement or loans and receivables. The classification depends on the purpose for which the investments were acquired.

Derivative financial instruments

Te Papa uses derivative financial instruments to hedge its exposure to foreign exchange movements. In accordance with its Foreign Exchange Management policy, Te Papa does not hold or issue derivative financial instruments for trading purposes. Te Papa has not adopted hedge accounting. Derivatives are initially recognised at fair value on the date a derivative

contract is entered into and are subsequently re-measured at their fair value at each balance date. Movements in the fair value of derivative financial instruments are recognised in the surplus or deficit. The full fair value of a foreign exchange derivative is classified as current if the contract is due for settlement within 12 months of balance date. Otherwise, foreign exchange derivatives are classified as non-current.

Inventories

Inventories held for sale or use in the production of goods and services on a commercial basis are valued at the lower of cost and net realisable value. The cost of purchased inventory is determined using the weighted average cost method. The write-down from cost to current replacement cost or net realisable value is recognised through the surplus or deficit in the period when the write down occurs.

Accounting for foreign currency transactions

Foreign currency transactions (including those for which forward exchange contracts are held) are translated into New Zealand dollars using the exchange rates prevailing at the dates of the transactions. Foreign exchange gains and losses resulting from the settlement of such transactions and from the translation at year end exchange rates of monetary assets and liabilities denominated in foreign currencies are recognised through the surplus or deficit.

Property, plant and equipment

Property, plant and equipment asset classes consist of land, non-residential buildings, land improvements, furniture and fittings, plant & equipment, motor vehicles, computer hardware and long term exhibitions.

Property, plant and equipment are shown at cost or valuation, less any accumulated depreciation and impairment losses.

Revaluations

Land and buildings are revalued with sufficient regularity to ensure that the carrying amount does not differ materially from fair value and at least every 3 years. Fair value is determined from market-based evidence by an independent valuer. Specialised asset classes are carried at depreciated replacement cost. The carrying values of revalued items are reviewed at each balance date to ensure that those values are not materially different to fair value. Additions between revaluations are recorded at cost.

Accounting for revaluations

Te Papa accounts for revaluations of property, plant and equipment on a class of asset basis. The result of the above revaluations are credited or debited to an asset revaluation reserve for that class of asset. Where this results in a debit balance in the asset revaluation reserve, this balance is expensed in the statement of comprehensive income. Any subsequent increase on revaluation that off-sets a previous decrease in value recognised through the surplus or deficit will be recognised first in the statement of comprehensive income up to the amount previously expensed, and then credited to the revaluation reserve for that class of asset.

Additions

The cost of an item of property, plant and equipment is recognised as an asset only when it is probable that future economic benefits or service potential associated with the item will flow to Te Papa and the cost of the item can be measured reliably. Where an asset is acquired at no cost, or for a nominal cost, it is recognised at fair value when control over the asset is obtained.

Disposals

Gains and losses on disposals are determined by comparing the proceeds with the carrying amount of the asset. Gains and losses on disposals are included through the surplus or deficit. When revalued assets are sold, the amounts included in revaluation reserves in respect of those assets are transferred to general funds.

Depreciation

Depreciation is provided on a straight-line basis on all property, plant and equipment other than land, at rates that will write off the cost (or valuation) of the assets to their estimated residual values over their remaining useful lives. The useful lives and associated depreciation rates of major classes of assets have been estimated as follows:

Non residential Buildings (including components)	5 to 90 years	(1.1% - 20%)
Leasehold improvements	5 to 10 years	(10% - 20%)
Furniture and Fittings	3 to 15 years	(6.67% - 33%)
Plant and Equipment	5 to 50 years	(2% - 20%)
Computer Hardware	3 years	(33%)
Long-term Exhibitions	2.5 to 15 years	(6.67% to 40%)
Motor vehicles	5 years	(20%)

The residual value and useful life of an asset is reviewed, and adjusted if applicable, at each financial year end.

Intangible Assets

Software acquisition and development

Acquired computer software licenses are capitalised on the basis of the costs incurred to acquire and bring to use the specific software. Costs that are directly associated with the development of software for internal use by Te Papa are recognised as an intangible asset. Direct costs include the software development, employee costs and an appropriate portion of relevant overheads. Staff training costs on computer software are recognised through the surplus or deficit when incurred. Costs associated with the maintenance of Te Papa's website are recognised through the surplus or deficit when incurred.

Amortisation

The carrying value of an intangible asset with a finite life is amortised on a straight-line basis over its useful life. Amortisation begins when the asset is available for use and ceases at the date that the asset is derecognised. The amortisation charge for each period is recognised through the surplus or deficit. The useful lives and associated amortisation rates of major classes of intangible assets have been estimated as follows:

Acquired computer software	3 years	(33%)
----------------------------	---------	-------

Collections

Te Papa's collections are recorded at cost or valuation, with the exception of the Natural Environment collections, which are shown at replacement cost. Collections are valued annually with each class of collections valued once every three years. Acquisitions to collections between revaluations are recorded at cost. The result of the above revaluations are credited or debited to an asset revaluation reserve for that class of asset. Where this results in a debit balance in the asset revaluation reserve, this balance is expensed through the surplus or deficit. Any subsequent increase on revaluation that off-sets a previous decrease in value recognised through the surplus or deficit will be recognised first through the statement of comprehensive income up to the amount previously expensed, and then credited to the revaluation reserve for that class of asset.

In the Board's opinion, as the collections tend to have an indefinite life and are generally not of a depreciable nature, depreciation is not applicable.

Impairment of non-financial assets

Collections, property, plant and equipment and intangible assets that have a finite useful life are reviewed for impairment whenever events or changes in circumstances indicate that the carrying amount exceeds its recoverable amount. The recoverable amount is the higher of an asset's fair value less costs to sell and value in use.

Value in use is depreciated replacement cost for an asset where the future economic benefits or service potential of the asset are not primarily dependent on the asset's ability to generate net cash inflows and where Te Papa would, if deprived of the asset, replace its remaining future economic benefits or service potential.

If an asset's carrying amount exceeds its recoverable amount, the asset is impaired and the carrying amount is written down to the recoverable amount. For revalued assets the impairment loss is recognised against the revaluation reserve for that class of asset. Where that results in a debit balance in the revaluation reserve, the balance is recognised through the surplus or deficit.

For assets not carried at a revalued amount, the total impairment loss is recognised through the surplus or deficit.

The reversal of an impairment loss on a revalued asset is credited to the revaluation reserve. However, to the extent that an impairment loss for that class of asset was previously recognised through the surplus or deficit, a reversal of the impairment loss is also recognised through the surplus or deficit.

Creditors and other payables

Creditors and other payables are initially measured at fair value and subsequently measured at amortised cost using the effective interest rate method.

Revenue received in advance

Te Papa receives grants from organisations for scientific research projects. Under NZ IFRS funds are recognised as revenue when the conditions of the contracts have been met. A liability reflects funds that are subject to conditions that, if unfulfilled, are repayable until the condition is fulfilled. Te Papa also receives operational revenue in advance. This is included as a liability in the statement of financial position.

Superannuation schemes

Defined contribution schemes

Contributions to Kiwisaver and Government Superannuation Fund are recognised as personnel expenses through the surplus or deficit as incurred.

Provisions

Te Papa recognises a provision for future expenditure of uncertain amount or timing when there is a present obligation (either legal or constructive) as a result of a past event, it is probable that expenditures will be required to settle the obligation and a reliable estimate can be made of the amount of the obligation. Provisions are measured at the present value of the expenditures expected to be required to settle the obligation using a pre-tax discount rate that reflects current market assessments of the time value of money and the risks specific to the obligation. The increase in the provision due to the passage of time is recognised as a finance cost.

Short-term employee entitlements

Employee entitlements that Te Papa expects to be settled within 12 months of balance date are measured at undiscounted nominal values based on accrued entitlements at current rates of pay. These include salaries and wages accrued up to balance date, annual leave earned, but not yet taken at balance date, retiring and long service leave entitlements expected to be settled within 12 months, and sick leave.

Te Papa recognises a liability for sick leave to the extent that compensated absences in the coming year are expected to be greater than the sick leave entitlements earned in the coming year. The amount is calculated based on the unused sick leave entitlement that can be carried forward at balance date; to the extent Te Papa anticipates it will be used by staff to cover those future absences.

Te Papa recognises a liability and an expense for bonuses where it is contractually obliged to pay them, or where there is a past practice that has created a constructive obligation.

Long-term employee entitlements

Entitlements that are payable beyond 12 months, such as long service leave and retirement leave have been calculated on an actuarial basis. The calculations are based on:

- Likely future entitlements accruing to staff, based on years of service, years of entitlement, the likelihood that staff will reach the point of entitlement and contractual entitlements information; and
- The present value of the estimated future cash flows.

Goods and Services Tax (GST)

All items in the financial statements are presented exclusive of GST, except for receivables and payables which are presented on a GST inclusive basis. Where GST is not recoverable as input tax then it is recognised as part of the related asset or expense. The net amount of GST recoverable from, or payable to, the Inland Revenue Department (IRD) is included as part of

receivables or payables in the statement of financial position. The net GST paid to, or received from the IRD, including the GST relating to investing and financing activities, is classified as an operating cash flow in the statement of cash flows. Commitments and contingencies are disclosed exclusive of GST.

Income Tax

Te Papa is exempt from the payment of income tax in terms of section 20 of the Museum of New Zealand Te Papa Tongarewa Act 1992. Accordingly, no charge for income tax has been provided for.

Budget figures

The budget figures are derived from the statement of intent as approved by the Board at the beginning of the financial year. The budget figures have been prepared in accordance with NZ IFRS, using accounting policies that are consistent with those adopted by Te Papa for the preparation of the financial statements.

Cost allocation

All costs incurred are allocated to Te Papa's single output class: Museum Services. There have been no changes to the cost allocation methodology since the date of the last audited financial statements.

2 Revenue from Crown

Te Papa has been provided with funding from the Crown for the specific purposes of the Museum of New Zealand Te Papa Tongarewa as set out in its founding legislation and the scope of the relevant government appropriations. Apart from these general restrictions, there are no unfulfilled conditions or contingencies attached to government funding.

3 Other Revenue

	Actual 2011 \$000	Actual 2010 \$000
Commercial Revenue	12,235	12,364
Donation Income	142	166
Short Term Exhibitions	1,149	1,638
Touring Exhibitions	771	897
Other Exhibition Revenue	353	480
Other grants received	819	1,213
Other Revenue	1,246	1,309
Rental income from property	150	133
Sponsorship Revenue (In Kind)	413	338
Sponsorship Revenue (Cash)	3,808	3,774
Total other revenue	21,086	22,312

Note: Sponsorship Revenue is recognised as cash from sponsors and as in-kind goods or services supplied to Te Papa.

4 Gains

	Actual 2011 \$000	Actual 2010 \$000
Net foreign exchange gains	31	132
Net foreign derivatives gain	47	
Net foreign derivatives loss		(14)
Total gains	78	118

5 Personnel costs

	Actual 2011 \$000	Actual 2010 \$000
Salaries and Wages	24,764	25,090
Employer contributions to Government Superannuation Fund	35	46
Employer contribution to KiwiSaver	225	214
SSC Kiwisaver Recovery	(241)	(242)
Increase/(decrease) in employee entitlements	277	(58)
Total personnel costs	25,060	25,050

6 Other Expenses

	Actual 2011 \$000	Actual 2010 \$000
Administrative & General Office Expenses	1,470	1,569
Advertising and Public Relations	1,287	1,795
Audit fees for financial statement audit	99	97
Building & Exhibition Operating Costs	7,625	7,076
Computer and IT Costs	1,047	940
Consultants	1,557	2,075
Cost of Commercial Goods Sold	5,094	4,954
Impairment of receivables		3
Inventories written off	59	88
Other Expenses (including Board Fees)	488	344
Donations and Koha	32	5
Rates	76	81
Rent (operating lease)	214	167
Staff Recruitment, Uniform and Meal Costs	407	591
Travel - exhibition related	525	267
Training and Travel	764	977
Total Other Expenses	20,744	21,024

7 Cash and Cash Equivalents

	Actual 2011 \$000	Actual 2010 \$000
Cash on hand and at bank	746	4,535
Cash equivalents - term deposits <3mths	769	19,334
Total Cash and Cash equivalents	1,515	23,869

Short Term Investments >3 months	21,550	0
Total Short Term Investments	21,550	0

Included within the total of short term investments of \$21,550,000 (2010 \$23,869,000) are cash deposits restricted in their use totalling \$5,233,000 (2010 \$4,836,000). The carrying value of short term deposits approximates their fair value. Short Term Investments are Term Deposits with maturity dates greater than 3 months but less than 12 months.

The weighted average effective interest rate for term deposits is 4.38% (2010 4.66%)

8 Debtors and other receivables

	Actual 2011 \$000	Actual 2010 \$000
Debtors	2,496	1,844
Less: provision for impairment	(34)	(34)
Other recoverables	191	49
GST receivable	82	49
Accrued Interest	167	133
Total Debtors and other receivables	2,902	2,041

The carrying value of receivables approximates their fair value.

As at 30 June 2011 and 2010, all receivables have been assessed for impairment and appropriate provisions applied:

	2011			2010		
	Gross	Impairment	Net	Gross	Impairment	Net
Not past due	1528		1,528	1,438		1,438
Past due 1 - 30 days	155		155	298		298
Past due 31 - 60 days	660		660	46		46
Past due 61 - 90 days	28		28	24		24
Past due > 91 days	125	(34)	91	38	(34)	4
	2,496	(34)	2,462	1,844	(34)	1,810

As at 30 June 2011, all receivables have been assessed for impairment and appropriate provisions applied. Due to the large number of receivables, the impairment assessment is performed on a collective basis.

Movements in the provision for impairment of receivables are as follows:

	Actual 2011 \$000	Actual 2010 \$000
Balance at 1 July	34	30
Additional amounts provided for		4
Receivables written-off during period		
Balance at 30 June	34	34

9 Inventories

	Actual 2011 \$000	Actual 2010 \$000
Inventory held for the use in the provision of goods and services	985	977
Publications held for sale	258	241
Total Inventories	1,243	1,218

The write-down of commercial inventories amounted to \$59,433 (2010 \$88,413). There have been no reversals of write downs. Inventories held for sale or use in the provision of goods and services on a commercial basis are valued at the lower of cost and net realisable value.

No inventories are pledged as security for liabilities.

10 Financial Assets

	Actual 2011 \$000	Actual 2010 \$000
Non-current financial assets are represented by:		
Public Trust - (Eames Trust)	41	41
Investments - (Henderson Trust)	117	101
Investments - Term Deposits	47	
<i>Total non-current portion</i>	205	142

Maturity analysis and effective interest rate of term deposits

The maturity dates and weighted average effective interest rates for term deposits are as follows:

	Actual 2011 \$000	Actual 2010 \$000
Investment deposits with maturities of 1-3 months (2010: 1-3 months)	162	89
Weighted average effective interest rate	4.38%	4.66%

Non-current financial assets

Investments held by the Public Trustee for the EH Eames Trust have been recorded at the valuation supplied by the Public Trustee's statement of account for the year ended 30 June 2011.

Te Papa is trustee of the trust fund of Dugald Henderson. As part of the trust fund there are shares in the New Zealand share market. These include Fletcher Building Ltd, Rubicon Ltd, PPG Wrightson Ltd and Tenon Ltd total value \$76,317 (2010 \$72,775). There are also funds in Blackrock Investment Fund in the United States USD19,627 NZD 23,794 (2010 NZD28,307). These assets have been valued on the basis of published unit or share prices in the relevant markets. There were no impairment provisions for investments.

Derivative Financial Instruments

The total notional principal amount outstanding for forward foreign exchange contract derivatives at 30 June 2011 is NZD504,000 (2010 NZD2.6 million). The contracts consist of the purchase of USD290,000 (2010 USD430,000) and EUR57,500 (2010 EURO1,120,000).

11 Property, plant and equipment											
	Land	Non-residential buildings	Land Improvements	Plant & Equipment	Computer Hardware	Motor Vehicles	Furniture and Fittings	Exhibitions	WIP	Total	
	\$000	\$000	\$000	\$000	\$000	\$000	\$000	\$000	\$000	\$000	
Cost or valuation											
Balance at 1 July 2009	109,020	246,885	9,252	11,755	8,843	158	17,205	59,622	1,298	464,038	
Additions/Reclassification		1,103	4	1,944	362		716	150	852	5,131	
Accumulated Depreciation before Revaluation											
Revaluation increase/(decrease)											
Reclassification of Assets											
Disposals				(1)	(242)		(26)			(269)	
Balance at 30 June 2010	109,020	247,988	9,256	13,698	8,963	158	17,895	59,772	2,150	468,900	
Balance at 1 July 2010	109,020	247,988	9,256	13,698	8,963	158	17,895	59,772	2,150	468,900	
Additions/Reclassification		145		794	481		152	4,209	(1,507)	4,274	
Accumulated Depreciation before Revaluation	(1)	(16,484)	(4,415)							(20,900)	
Revaluation increase/(decrease)	(13,129)	1,981	(731)							(11,879)	
Reclassification of Assets											
Disposals				(53)	(196)		(3)			(252)	
Balance at 30 June 2011	95,890	233,630	4,110	14,439	9,248	158	18,044	63,981	643	440,143	
Accumulated Depreciation											
Balance at 1 July 2009		5,464	4,090	5,664	7,587	151	13,436	41,002		77,394	
Depreciation expense		5,714	161	1,104	666	6	936	4,113		12,700	
Eliminate on disposal					(195)		(26)			(221)	
Eliminate on revaluation											
Transfer to assets held for sale											
Impairment losses											
Reversal of impairment losses											
Balance at 30 June 2010		11,178	4,251	6,768	8,058	157	14,346	45,115		89,873	

Balance at 1 July 2010		11,178	4,251	6,768	8,058	157	14,346	45,115		89,873
Depreciation expense		5,307	162	1,192	606	1	802	4,154		12,224
Eliminate on disposal		(228)			(12)		(3)	6		(237)
Eliminate on revaluation		(16,257)	(4,413)	(234)	(178)			182		(20,900)
Transfer to assets held for sale										
Impairment losses										
Reversal of impairment losses										
Balance at 30 June 2011				7,726	8,474	158	15,145	49,457		80,960
Carrying amounts										
At 30 June and 1 July 2009	109,020	241,421	5,162	6,091	1,256	7	3,769	18,620	1,298	386,644
At 30 June 2010	109,020	236,810	5,005	6,930	905	1	3,549	14,657	2,150	379,027
At 30 June 2011	95,890	233,630	4,110	6,713	774		2,899	14,524	643	359,183

The total amount of property, plant and equipment in the course of construction is \$643,000 (2010 \$2,150,000). The total amount of property, plant and equipment disposed of was \$252,000 (2010 \$269,000). The total loss on disposal of property, plant and equipment is \$4,000 (2010 \$49,000). The carrying values of property, plant and equipment have been assessed and as they are not materially different to fair value no impairment has been recognised. There are no items of Property, Plant and Equipment (2010 - Nil), that have been pledged as security and there are no restrictions on any of these items (2010 - Nil).

Valuation

The most recent valuation of land and buildings was performed by independently contracted registered valuer, Nigel Fenwick of Jones Lang LaSalle New Zealand Limited. The valuation is effective as at 30 June 2011. The total fair value of land and buildings valued by Nigel Fenwick is \$333,630,000

Land: Land is valued at fair value using market-based evidence based on its highest and best use with reference to comparable land values.

Buildings: Specialised buildings are valued at fair value using Depreciated Replacement Cost (optimised). Market based evidence and significance of the property were considered in determining the fair value of buildings.

12 Intangible Assets

	Actual 2011 \$000	Actual 2010 \$000
Cost		
Balance at 1 July	3,268	2,847
Additions	6	421
Work in Progress		
Disposal		
Balance at 30 June	3,274	3,268
Accumulated amortisation and impairment losses		
Balance at 1 July	2,077	1,379
Amortisation expense	704	698
Disposals		
Impairment losses		
Balance at 30 June	2,781	2,077
Carrying amounts		
At 30 June and 1 July 2009	1,468	
At 30 June 2010	1,191	
At 30 June 2011	493	

The total amount of internally generated Intangible Assets was 2011 Nil (2010 \$75,000). There are no items of Intangible Assets (2010 - Nil), that have been pledged as security and there are no restrictions on any of these items (2010 - Nil). No impairment has been recognised for Intangible Assets (2010 Nil)

Significant Intangible Assets

	Carrying Amount	Remaining Amortisation Period (months)
Jadestar HR Enhancement system	74	8
Electronic Document and Records Management System	31	11

13 Collections

	Archaeological	Art	Botanical	Ceramics	Te Aka Matua Library	History	Invertebrate	Maori	New Zealand Post Collection	Pacific and International	Photographic Archive	Vertebrates	Total
	\$000	\$000	\$000	\$000	\$000	\$000	\$000	\$000	\$000	\$000	\$000	\$000	\$000
Balance at 30 June 2009	3,904	170,307	15,517	1,971	9,895	14,690	31,813	162,843	97,358	58,210	8,949	43,058	618,515
Acquisitions		1,878	6		94	875	53	34	100	51	214	323	3,628
Donated Assets		498	96			66		2		3		7	672
Revaluation increase/(decrease)	18,234							46,800		38,090			103,124
Impairment movement													-
Balance at 30 June 2010	22,138	172,683	15,619	1,971	9,989	15,631	31,866	209,679	97,458	96,354	9,163	43,388	725,939
Balance at 30 June 2010	22,138	172,683	15,619	1,971	9,989	15,631	31,866	209,679	97,458	96,354	9,163	43,388	725,939
Acquisitions		3,645	14			301		153		124	124	4	4,365
Donated Assets		22	17			53	156	36		6		202	492
Revaluation increase/(decrease)			96		30	629	37,833	(28,000)			33,410	1,661	45,659
Impairment movement													
Balance at 30 June 2011	22,138	176,350	15,746	1,971	10,019	16,614	69,855	181,868	97,458	96,484	42,697	45,255	776,455

Collection	Last revalued	Valuation basis/methodology
Archaeological	30/06/2010	Valued based on an estimated replacement cost of archaeological excavations.
Art	30/06/2009	Based on current market values, some items are valued on a sample basis (such as prints and photos). Some paintings are valued in foreign currency and then translated into NZ\$ where the market is international. Other items are valued based on the market for similar items with values drawn from auction and dealers' catalogues.
Botanical	30/06/2011	These are divided into lots and then valued on the basis of estimated replacement costs.
Ceramics	30/06/2009	Ceramics are highly collectible and have a market value. Valuation is based on current market values drawn from auction and dealers' catalogues.
Te Aka Matua Library	30/06/2011	These are variously valued using a combination of market values, replacement cost, sampling and comparative values.
History	30/06/2011	Where possible these are valued with reference to current market values obtained from auction catalogues. Some items of irreplaceable historical significance are valued by comparison with other similarly irreplaceable items.
Invertebrate	30/06/2011	These are divided into lots and then valued on the basis of estimated replacement costs.
Maori	30/06/2010	These items are valued based on current domestic sales based on catalogues from reputable auction houses.
New Zealand Post Collection	30/06/2009	The market value of this collection has been valued based on reputable stamp catalogues and references. Bulk items were sampled.
Pacific and International	30/06/2010	Based on international and local sales drawn from auction sales and dealer catalogues.
Photographic Archive	30/06/2011	Based on market values drawn from auction sales and dealer catalogues.
Vertebrates	30/06/2011	These are divided into lots and then valued on the basis of estimated replacement costs. Some specimens were given a commercial value based on current auction sales and dealers' catalogues.

Te Papa's collections

Te Papa's collections have been valued at cost or market value, with the exception of the Natural Environment collections, which are shown at replacement cost. Collections are valued annually, with each class of collection valued at least once every three years. Acquisitions to collections between revaluations are recorded at cost. As the collections tend to have an indefinite life and are generally not of a depreciable nature, depreciation is not applicable.

- The valuation for the library, history and photographic collections was undertaken by Webb's (Auckland) as independent valuers in 2011.
- The valuation for the Art, New Zealand Post and Ceramic collections was undertaken by R.J. Watts & Associates as independent valuers in 2009.
- The valuation for the Māori, Pacific and International collections was undertaken by Webb's (Auckland) as independent valuers in 2010.
- The valuation for the Archaeological collection was undertaken by Foss Leach as independent valuer in 2010.

In July 2011 The Crown signed a Deed of Settlement of the Treaty claim with Rongowhakaata. Te Hau ki Turanga, an asset in Te Papa's Maori Collection, was revalued to nil to reflect this. The revaluation was based on the market value ascribed to Te Hau ki Turanga by Webbs in 2010.

The valuation of the botanical, vertebrate and invertebrate Collections was conducted by Te Papa developed in house model based on current replacement costs. The model was independently validated by Simon Storey, of Simon Storey Valuers, Sydney. Simon Storey is an accredited valuer of similar collections for the Australian Government.

14 Creditors and other payables

	Actual 2011 \$000	Actual 2010 \$000
Creditors	1,255	3,238
Capital Creditors	1	396
Accrued expenses	1,042	1,108
Other payables	23	46
Total Creditors and other payables	2,321	4,788

Creditors and other payables are non-interest bearing and are normally settled on 30-day terms, therefore the carrying value of creditors and other payables approximates their fair value.

15 Revenue in Advance

	Actual 2011 \$000	Actual 2010 \$000
Revenue in advance (operational)	1,955	758
Special Purpose Funds Revenue received in advance	2,455	2,295
Total revenue in advance	4,410	3,053

16 Employee Entitlements

	Actual 2011 \$000	Actual 2010 \$000
Current employee entitlements are represented by:		
Accrued salaries and wages	898	844
Annual leave	1,714	1,730
Sick leave	8	0
Retirement and long service leave	306	148
Total current portion	2,926	2,722
Non-current employee entitlements are represented by:		
Retirement and long service leave	490	378
Total non-current portion	490	378

The present value of the retirement and long service leave obligations depend on a number of factors that are determined on an actuarial basis using a number of assumptions. Two key assumptions used in calculating this liability include the discount rate and the salary inflation factor. Any changes in these assumptions will impact on the carrying amount of the liability.

In determining the appropriate discount rate for 2011 Te Papa has adopted the discount and inflation rates specified by Treasury in their revised model introduced for 2011. The discount rates used for 2011 were: 1 year 2.84%; 2 years 3.81%; 3 years + 6.0% and long term salary inflation rate of 3.5% (2010: A discount rate of 3.48% and an inflation factor of 2.4% were used)

The discount rates were referenced to the New Zealand Government bond yield curve published 30 June 2011.

Sensitivity Analysis

As at 30 June 2011, if there was a movement in the discount rate for Te Papa by plus or minus 1%, the effect on the retirement and long service leave would be approximately \$5,300 and if there was a movement in long term salary inflation rate for Te Papa by plus or minus 1%, the effect on long term salary inflation would be approximately \$33,500. As at 30 June 2011, if there was a movement in the discount rate and long term salary inflation rate for Te Papa by plus or minus 1%, the effect on the retirement and long service leave would be \$3,780 and the long term salary inflation would be \$17,300.

17 Equity	Actual 2011 \$000	Actual 2010 \$000
Other Reserves		
<i>Restricted Reserves</i>		
Balance at 1 July	2,682	3,451
Transfer from Accumulated Losses	95	(769)
Balance at 30 June	2,777	2,682
 <i>Property, plant and equipment revaluation reserve</i>		
Balance at 1 July	152,205	152,205
Impairment charges		
Reversal of impairment		
Revaluations	(11,879)	
Transfer to general funds on disposal		
Balance at 30 June	140,326	152,205
 <i>Collection Revaluation Reserve</i>		
Opening Balance	674,079	570,954
Revaluations	45,659	103,124
Impairment movement	0	0
Balance at 30 June	719,738	674,078
 <i>FX Revaluation Reserve</i>		
Opening Balance		
Revaluations	47	0
Impairment movement		
Balance at 30 June	47	0
 <i>Accumulated Losses</i>		
Balance at 1 July	(144,599)	(133,409)
Net Surplus/(Deficit)	(12,334)	(11,959)
Transfers to Other Reserves	(109)	769
Balance at 30 June	(157,042)	(144,599)
 Total Other Reserves	 705,846	 684,366
 General funds		
Balance at 1 July	438,898	429,898
Capital contribution	9,000	9,000
Balance at 30 June	447,898	438,898
 Total Equity per Statement of Financial Position	 1,153,744	 1,123,264

Restricted reserves relate to:

Te Papa receives bequests from private individuals for collection acquisitions and organisations for scientific research projects. Where they are discretionary they are recognised as revenue once received. Where the funds are subject to restrictions on use, such funds are identified as restricted reserves.

Restricted reserves consists of:	\$000	\$000
- Trusts and bequests	2,047	2,025
- Project funding	730	657
	2,777	2,682

No other reserves are subject to restrictions on distribution.

Property, plant and equipment revaluation reserves relate to:

The result of revaluations are credited or debited to an asset revaluation reserve for each class of asset. Where this results in a debit balance in the asset revaluation reserve, this balance is expensed in the statement of comprehensive income. Any subsequent increase on revaluation that off-sets a previous decrease in value recognised in the statement of comprehensive income are recognised first in the statement of comprehensive income up to the amount previously expensed, and then credited to the revaluation reserve for that class of asset.

	2011	2010
Property, plant and equipment revaluation reserves consists of:	\$000	\$000
Land	59,458	72,587
Buildings	70,248	68,998
Other	10,621	10,620
Total property, plant and equipment revaluation reserves	140,327	152,205

Collection revaluation reserves relate to:

The result of revaluations are credited or debited to an asset revaluation reserve for Collections. Where this results in a debit balance in the Collections revaluation reserve, this balance is expensed in the statement of comprehensive income. Any subsequent increase on revaluation that off-sets a previous decrease in value recognised in the statement of comprehensive income are recognised first in the statement of comprehensive income up to the amount previously expensed, and then credited to the Collections revaluation reserve.

	2011	2010
Collection revaluation reserves consists of:	\$000	\$000
Archaeozoological	34,212	34,212
Art	120,997	120,997
Botanical	14,994	14,899
Ceramics	1,698	1,698
Library	4,101	4,071
History	12,408	11,779
Invertebrates	92,410	54,747
Maori	133,632	161,632
NZ Post	77,092	77,092
Pacific	116,623	116,623
Photography	69,730	36,150
Vertebrates	41,840	40,178
Total collection revaluation reserves	719,737	674,078

18 Reconciliation of net surplus/(deficit) to net cash from operating activities

	Actual 2011 \$000	Actual 2010 \$000
Net surplus/(deficit)	(12,334)	(11,959)
Add/(less) non cash items:		
Depreciation and amortisation expense	12,928	13,398
Donated assets income	(492)	(672)
Other revenue	(491)	(338)
Other expenses	472	368
Total non-cash items	12,417	12,756
Add/(less) items classified as investing or financing activities:		
(Gains)/losses on disposal of property, plant and equipment	4	49
Total items classified as investing or financing activities	4	49
Add/(less) movements in working capital items:		
Debtors and other receivables	(861)	(39)
Inventories and Publications Work in Progress	(139)	(93)
Creditors and other payables	(2,073)	784
Prepayments	564	(346)
Income in advance	1,357	(19)
Employee entitlements	47	271
Net movements in working capital items	(1,105)	558
Net cash from operating activities	(1,018)	1,404

19 Capital commitments and operating leases

	Actual 2011 \$000	Actual 2010 \$000
Capital commitments		
Property, plant and equipment	0	171
Colin McCahon Painting <i>Koru 1,2,3</i>	1,100	0
Total capital commitments	1,100	171

In June 2011 Te Papa entered into a contract to purchase the Colin McCahon painting *Koru 1,2,3*. The contract will be settled in December 2011.

Operating leases as lessee

The future aggregate minimum lease payments to be paid under non-cancellable operating leases are as follows:

	Actual 2011 \$000	Actual 2010 \$000
Not later than one year	207	167
Later than one year and not later than five years	721	668
Later than five years		153
Total non-cancellable operating leases	928	988

Te Papa leases land at 63 Cable Street and 51 Cable Street. The non-cancellable operating leases run for a further 71 months expiring in May 2016. Te Papa entered into a Lease arrangement with Kirkcaldie and Stains for the Te Papa store in Brandon St for a term of 3 years until 31 March 2014

Operating leases as lessor

The future aggregate minimum lease payments to be paid under non-cancellable operating leases are as follows:

	Actual 2011 \$000	Actual 2010 \$000
Not later than one year	196	196
Later than one year and not later than five years	353	478
Later than five years	251	321
Total non-cancellable operating leases	800	995

Te Papa leases part of the Tory St building to the Wellington City Council. The current lease was renewed on 2 February 2010 with one 3 year right of renewal remaining.

Te Papa leases part of the Cable St building to the Wellington Region Free Kindergarten Association Incorporated. The current lease expires on 7 February 2020 with two 5 year rights of renewal.

There are no restrictions placed on Te Papa by any of its leasing arrangements.

20 Contingencies

Contingent Liabilities

Te Papa has no quantifiable contingent liabilities or contingent assets. An unsolicited assessment from the New Zealand Fire Service Commission was received by the Ministry of Culture and Heritage after 30 June 2010. This relates to fire service levies on arts exhibitions covered by the Government Indemnity of Touring Exhibitions scheme. Some of Te Papa's exhibitions are included within the assessment. The assessment is being disputed by the Ministry.

The contingency previously disclosed in relation to Te Hau ki Turanga has been removed in 2011. Please see Note 24.

Contingent Assets

Te Papa has no contingent assets (2010 \$Nil)

21 Related party transactions and key management personnel

Te Papa is a wholly owned entity of the Crown. The government significantly influences the role of Te Papa in addition to being its major source of revenue. Te Papa has been provided with funding from the Crown of \$23.7 million (2010 \$23.7 million) for specific purposes as set out in its founding legislation and the scope of the relevant government appropriations. In the normal course of business Te Papa enters into transactions with government departments, state- owned enterprises and other Crown Entities.

All related party transactions have been entered into on an arms length basis.

Purchases from these entities for the year ended 30 June 2011 totalled \$6.7 million. \$6.3 million was taxes paid to the IRD and \$449,000 to ACC, Genesis and NZ Post for ACC levies, electricity and postal services, respectively.

Related party transactions		Transaction	Transaction Value		Balance Outstanding	
			year ended 30 June	2010	year ended 30 June	2010
			2011	2010	2011	2010
Sir Wira Gardiner - Chairman	Maori Television Services - Director	Goods and services provided to Te Papa	156			
John Judge - Board Member	Chairperson - Auckland Art Gallery Foundation	Goods and services provided to Te Papa		25,050		
	Chairperson - Accident Compensation Corporation (appointed March 2009)	Goods and services provided to Te Papa	167,630	105,057		61,686
	Director - Fletcher Building Ltd	Goods and services provided to Te Papa		4,897		107
		Goods and services provided to Fletcher Ltd		103,434		
	Director - ANZ National Bank (appointed December 2008)	Term Deposit Investments		11,946,270		1,584,085
		Goods and services provided to ANZ National Bank		74,479		22,658
Ngatata Love - Board Member	Council Member - Massey University	Goods and services provided to Te Papa	8,497	1,604	2,300	
		Goods and services provided to Massey University	296,736	181,752	16,013	12,274
Hon Michael Bassett - Board Member	Auckland City Council - Historian	Goods and services provided to Te Papa	1,602			
Chris Parkin - Board Member	Director - Museum Hotel	Goods and services provided to Te Papa	3,844	6,954		
		Goods and services provided to Museum hotel	24,712	11,947	2,646	1,248
Miria Pomare - Board Member	Director - Board member Te Rūnanga O Toa Rangātira Inc	Goods and services provided to Te Rūnanga O Toa Rangātira Inc	2,000	1,778		2,000
Wendy Lai - Board Member	Deloitte - Partner	Goods and services provided to Te Papa	43,102			
Grant Taylor - Audit Committee	Partner - Ernst & Young	Goods and services provided to Te Papa	7,409	49,836		
Glenys Coghlan - Board Member	Partnership Wellington	Goods and services provided to Te Papa	161,344	282,057	3,460	643
	NZ Tourism Board	Goods and services provided to Te Papa	14,050	3,263	2,800	3,263
Hon Sandra Lee - Board Member		No transactions				
Sue Piper - Board Member		No transactions				
Fiona Campbell - Board Member		No transactions				
Philip Carter - Board Member		No transactions				

Balances outstanding at year end are GST inclusive, transaction values are GST exclusive. No provision has been required, nor any expense recognised for impairment of receivables from related parties (2010 - \$nil).

Key management personnel compensation

	Actual 2011 \$000	Actual 2010 \$000
Salaries and other short-term employee benefits	1,582	1,481
Post-employment benefits	24	0
Other long term benefits	15	16
Termination benefits	0	0
Total key management personnel compensation	1,621	1,497

Key management personnel include all board members, the Chief Executive, Kaihautū, and the Leadership team. There have been no related party transactions entered into by Te Papa for any organisation in which management personnel have declared an interest in 2011.

22 Board member remuneration

The total value of remuneration paid or payable to each Board member during the year was:

	Actual 2011 \$000	Actual 2010 \$000
Sir Wira Gardiner (Chairperson)	28	16
Sue Piper	17	17
Hon Dr Michael Bassett	17	14
Chris Parkin	17	13
Miria Pomare	17	17
Philip Carter	12	
Wendy Lai	12	
Fiona Campbell	10	
John Judge ^	11	33
Sir Ngatata Love *		9
Hon Sandra Lee *	1	17
	142	138

^ Term completed 31 October 2010

** Term completed 31 July 2010*

Grant Taylor (Partner in Ernst & Young) is a non Board member of the Assurance and Risk Committee. Ernst & Young were not paid fees during 2011 (2010 Nil) for services provided in respect of this role. There have been no other payments made to committee members appointed by the Board who are not Board members during the financial year. Te Papa has effected Directors and Officers Liability Insurance cover during the financial year in respect of the liability and costs of Board members and employees.

23 Employee remuneration

Total remuneration paid or payable	Actual 2011	Actual 2010
Salary Band		
\$100,000 - \$110,000	7	9
\$110,001 - \$120,000	4	1
\$120,001 - \$130,000	6	3
\$130,001 - \$140,000	2	0
\$140,001 - \$150,000	0	0
\$150,001 - \$160,000	0	1
\$160,001 - \$170,000	0	1
\$170,001 - \$180,000	1	2
\$180,001 - \$190,000	1	1
\$190,001 - \$200,000	2	2
\$200,001 - \$210,000	0	0
\$280,001 - \$290,000	1	0
\$290,001 - \$300,000	0	1
\$300,000 - \$310,000	1	0
	25	21

During the year end 30 June 2011, 6 (2010: 5) employees received compensation and other benefits in relation to cessation totalling \$156,679 (2010: \$194,919).

24 Events after the balance sheet date

Te Hau ki Turanga

In 2002 the Te Papa Board formally acknowledged that while it inherited Te Hau ki Turanga through the Museum of New Zealand Te Papa Tongarewa Act 1992, the circumstances of its acquisition in early 1867, admitted by the Crown as being a breach of the Treaty of Waitangi, meant that Te Papa could not continue to consider itself as the legal owner of the whareniui. Te Papa subsequently conveyed to the Rongowhakaata Charitable Trust the Board's view that Rongowhakaata should be recognised as the legal owner of Te Hau ki Turanga.

In December 2004, the Waitangi Tribunal found that the acquisition of Te Hau ki Turanga by the Crown in 1867 was in breach of Article 2 of the Treaty of Waitangi. The Tribunal noted there remains a question as to where legal title of the whareniui resides.

On 20 July 2011 the Crown initialled a deed of settlement for all historical Treaty claims with Rongowhakaata. Within the deed of settlement it is provided that ownership of Te Hau ki Turanga will vest in Rongowhakaata under the proposed settlement legislation. No provision has been made for compensation to Te Papa. Te Hau ki Turanga will remain at Te Papa until 31st March 2017 (or a date mutually agreed between Te Papa and Rongowhakaata). As a result, Te Papa has removed the asset and written down its revaluation reserve (by \$28 million) as at 30 June 2011. The contingent liability previously disclosed in the annual accounts has now been removed as the liability associated with the care and responsibility given to Te Papa until 2017 has no quantifiable value.

25 Categories of financial assets and liabilities

The carrying amounts of financial assets and liabilities in each of the NZIAS 39 categories are as follows:

	Actual 2011 \$000	Actual 2010 \$000
Loans and receivables		
Cash and cash equivalents	1,515	23,869
Short Term Investments	21,550	
Debtors and other receivables	2,902	2,041
	25,967	25,910
Financial assets at fair value through surplus and deficit - designated at initial recognition		
Investments	205	142
	205	142
Total financial assets	26,172	26,052
Derivative financial instrument assets	47	
Derivative financial instrument liabilities		14
Gains/(losses) on financial assets designated at fair value through surplus and deficit at initial recognition:		
	Actual 2011 \$000	Actual 2010 \$000
Eames Estate - funds in Public Trust Balanced Income		
gains/(losses) through profit and loss		4
Henderson Estate - NZ Shares		
gains/(losses) through profit and loss	4	8
Henderson Estate - Blackrock Investment Fund, US		
gains/(losses) through profit and loss	(5)	1
	(1)	13

Te Papa's financial assets designated at fair value through the surplus and deficit statement at initial recognition are classified as non current investments. These include shares in companies and funds invested with the Public Trust. The fair values are based on quoted prices from active markets, with gains or losses on re-measurement recognised in the surplus and deficit.

Fair Value Hierarchy Disclosures

For those instruments recognised at fair value in the statement of financial position, fair values are determined according to the following hierarchy:

Quoted market price (**level 1**) – Financial instruments with quoted prices for identical instruments in active markets.

Valuation technique using observable inputs (**level 2**) – Financial instruments with quoted prices for similar instruments in active markets or quoted prices for identical or similar instruments in inactive markets and financial instruments valued using models where all significant inputs are observable.

Valuation techniques with significant non-observable inputs (**level 3**) – Financial instruments valued using models where one or more significant inputs are not observable. The following table analyses the basis of the valuation of classes of financial instruments measured at fair value in the statement of financial position.

	Actual 2011 \$000	Actual 2010 \$000
Financial Assets	252	142
Valuation Technique		
Quoted Market Price		
Investments	205	142
Observable inputs		
Derivative financial instrument assets	47	0
Significant non-observable inputs		
Investments	0	0
Financial liabilities	0	14
Valuation Technique		
Quoted Market Price		
Derivative financial instrument assets	0	0
Observable inputs		
Derivative financial instrument assets	0	14
Significant non-observable inputs		
Derivative financial instrument assets	0	0

There were no transfers between the different levels of the fair value hierarchy.

26 Financial instrument risks

The table below analyses Te Papa's financial liabilities into relevant maturity groupings based on the remaining period at balance sheet date to the contractual maturity date.

	Less than 6 months \$000	Between 6 months and 1 year \$000	Between 1 year and 5 years \$000
2011			
Creditors and other payables (note 14)	2,321		
2010			
Creditors and other payables (note 14)	4,788		

Contractual maturity analysis of derivative financial instrument liabilities

The table below analyses Te Papa's forward exchange contract derivatives into relevant maturity groupings based on the remaining period at balance date to the contractual maturity date. The amounts disclosed are the contractual undiscounted cash flows.

	Liability carry amount \$000	Asset carry amount \$000	Contractual cash flows NZ \$000	Less than 6 months NZ \$000	Between 6 months and 1 Year NZ \$000	Between 1 year and 5 years NZ \$000
2011						
Gross settled forward foreign exchange contracts:		47				
- outflow			598	443	155	0
- inflow			598	443	155	0
2010						
Gross settled forward foreign exchange contracts:	14	0	0	0	0	0
- outflow	0	0	2,609	2,362	247	0
- inflow	0	0	2,609	2,362	247	0

Te Papa's activities expose it to a variety of financial instrument risks, including market risk, credit risk and currency risk. Te Papa does not allow any transactions that are speculative in nature to be entered into.

Market Risk

The interest rates on Te Papa's investments are disclosed in note 10.

Fair value interest rate risk

Fair value interest rate risk is the risk that the value of a financial instrument will fluctuate due to the changes in the market interest rates. Te Papa's exposure to fair value interest rate risk is limited to its bank term deposits which are held at fixed rates of interest.

Cash flow interest rate risk

Cash flow interest rate risk is the risk that the cash flows from a financial instrument will fluctuate due to changes in market interest rates. Investments issued at variable interest rates expose Te Papa to cash flow interest rate risk. Te Papa's on call account is subject to changes in the market interest rates.

Sensitivity analysis

As at 30 June 2011 Te Papa held cash and cash equivalents at call totalling \$902,337 (2010 \$255,569) which were at floating rates. A movement in the interest rate of plus or minus 1% has an effect on interest income of \$9,023 (2010 \$2,556).

Currency Risk

Currency risk is the risk that the fair value or future cash flows of a financial instrument will fluctuate due to changes in foreign exchange rates. Since July 2007 Te Papa has held a NZ bank account in US currency USD633,970 (2010 USD535,000) to settle transactions arising from the touring exhibition programme.

As a result of this bank account, exposure to currency risk arises.

Sensitivity analysis

At 30 June 2011, if the NZ dollar had weakened/ strengthened by 5% against the US dollar with all other variables held constant, the surplus/deficit for the year would have been: \$40,403 (2010 \$36,707) lower if the NZ \$ had weakened :\$36,559 (2010 \$40,571) higher if the NZ \$ had strengthened. Movements in exchange rates result in foreign exchange gains/losses on translation of the US dollar denominated bank account (opened in July 2007) balance.

Credit risk

Credit risk is the risk that a third party will default on its obligation to Te Papa, causing Te Papa to incur a loss. Te Papa invests surplus cash with registered banks and limits the amount of credit exposure to any one institution. Te Papa's maximum credit exposure for each class of financial instrument is represented by the total carrying amount of cash and cash equivalents (note 7) and net debtors (note 8) and term deposits (note 10). There is no collateral held as security against these financial instruments. Te Papa has no significant concentrations of credit risk, as it has a small number of credit customers and only invests funds with registered banks with specified Standard and Poor's credit ratings. Te Papa does not have any significant credit risk exposure to a single counterparty or any group of counterparties having similar characteristics due to the large number of customers included in the Te Papa's customer base. The credit risk on cash at bank, short term investments and foreign exchange dealings is limited as the Te Papa spreads its business amongst a number of AA+ rated counterparties. The credit risk relating to cash at bank and short term investments is insured by the Government deposit guarantee scheme up to a maximum of \$1,000,000 per depositor per guaranteed institution.

Liquidity risk

Liquidity risk is the risk that Te Papa will encounter difficulty raising liquid funds to meet commitments as they fall due. In meeting its liquidity requirements, Te Papa closely monitors its forecast cash requirements.

Te Papa maintains a target level of available cash to meet liquidity requirements.

27 Capital management

Te Papa's capital is its equity, which comprises accumulated funds and other reserves. Equity is represented by net assets. Te Papa is subject to financial management and accountability provisions of the Crown Entities Act 2004, which imposes restrictions in relation to borrowing, acquisition of securities, issuing guarantees and indemnities, and the use of derivatives. Te Papa manages its equity as a by-product of prudently managing revenues, expenses, assets, liabilities, investments, and general financial dealings to ensure Te Papa effectively achieves its objectives and purpose, whilst remaining a going concern.

28 Explanation of significant variances against budget

The explanations below reflect variances against the re-allocated forecast figures:

Statement of comprehensive income

Interest Income

This was favourable compared to Budget by \$134K due to Te Papa managing its cash more effectively and being able to place more funds on higher interest yielding Term Deposits.

Other revenue

Other revenue generated in 2011 fell below budget expectations by \$2.2 million. This was due to a downturn in economic activity and the impact of the Christchurch earthquake, resulting in lower than expected visitor numbers and reduced discretionary expenditure.

Personnel costs

Savings of \$907,000 against budget were a result of a number of permanent positions remaining vacant in 2011.

Other expenses

Other expenses were below budget by \$2.1 million. This is due to lower visitor numbers resulting in lower cost of sales and less reliance on external contractors and consultants.

Depreciation and amortisation

Depreciation was underestimated by \$518,000 due to an error in the Budget estimation caused by a timing difference.

Statement of financial position

Cash and Cash Equivalents and Short Term Investments

Cash and Cash Equivalents and Short Term Investments recorded an increase over budget of \$2.7 million which reflects greater than expected Term Deposit holdings. The cash reserves reflect unspent prior year capital funding which is intended for the refreshment of long term exhibitions, and more efficient cash management resulting in less on call funds held in favour of longer term interest bearing deposits.

Property, Plant & Equipment

In accordance with NZIAS 16 the Land and Buildings of Te Papa were revalued to Optimised Depreciated Replacement Cost as at 30 June 2011. The revaluation reflects a decrease in value of land of \$13 million and an increase in the value of buildings and land improvements of \$1.3 million.

Collections

Te Papa revalues its collections on a 3 year cycle. This takes into consideration accessioning, and the current Market Values of items held in the collections. The movement in the Collection Reserve in 2011 is \$45.7 million.

Employee Entitlements

Actuarial calculations of Long Service and Retirement Leave are performed at Year End in accordance with NZIAS 19. See note 16. These are not budgeted for as they relate to an entitlement at one point in time.

Statement of changes in equity

As discussed above the movement in Equity in 2011 of \$30.5 million, largely attributable to the revaluation of PPE and Collections in 2011 which were: photography, history, library, botanical, vertebrates and invertebrates.

Āpitiḡanga – Appendices

Appendix 1: Loans to Other Institutions

EXHIBITIONS

New Zealand

AUCKLAND

2 large ceramic vases were lent to Objectspace for their exhibition titled *Richard Parker: Master of Craft*. The exhibition surveys the career and practice of this defining figure within New Zealand ceramics.

WAIKATO

5 casts of taonga were lent to Waikato Museum of Art & History Te Whare Taonga o Waikato to be used in the children's exhibition *Te Pihinga*.

4 mounted bird specimens and the taiaha *Te Kopara* were lent to Waikato Museum of Art & History Te Whare Taonga o Waikato for their exhibition *Nga Pou Whenua* an exhibition that explores the past, present and future of Tainui waka.

ROTORUA

Painting New Zealand: Art from Te Papa 1890 - 1950 at the Tauranga Art Gallery features a selection of 23 paintings from the collection of the Museum of New Zealand Te Papa Tongarewa.

MASTERTON

7 taonga, including the waka Te Heke Rangitira, were lent to Aratoi: Wairarapa Museum of Art & History for their exhibition Wairarapa Moana: He Pataka Kai, He Pataka Korero Stories about a Lake and its People. The exhibition is a history of the lake with the waka as the centrepiece.

PALMERSTON NORTH

A mounted stitchbird specimen was lent to Te Manawa for display in their exhibition *Te Awa – The River: Heart of the Manawatu*. The exhibition celebrates the Manawatu River as a symbol of the interdependence of all living things

WELLINGTON

The mere pounamu *Amokoura* was lent to Ngati Toa Rangitira to support the book launch of *Ka Mate, Ka Ora! The spirit of Te Rauparaha* written by Heeni Collins.

5 taonga were lent to Pataka - Porirua Museum of Arts & Cultures Te Marae o Te Umu Kai o Hau for their exhibition *The Pa of Porirua* which explored the pa and kaainga of Porirua in the 1820s to 1840s.

A petrological microscope, the mineralogical reference set once belonging to Sir James Hector, and Augustus Hamilton's personal diary were lent to the New Zealand Portrait Gallery Te Pukenga Whakaata for their exhibition *The Art of Science*.

12 albatross skins of birds that died as a result of the Wahine Storm were lent to the Museum of Wellington City & Sea for an exhibition that commemorates the 1968 sinking of the Interislander ferry.

A wall installation by Richard Killeen was lent to the Office of the Prime Minister for display in the Liverpool Room in the new refurbished Government House.

5 archaeological items were lent to Parliamentary Service for display at Bowen House, the site of Baron von Alzdorf's Wine Cellar.

22 artworks were lent to the City Gallery Wellington for their exhibition *Tender is the Night*. The exhibition incorporates a range of works from different historical periods and disciplines reflecting upon shared experiences of love and loss.

NELSON

2 rats, a lamb, a locust and a cabin settee were lent to the Nelson Provincial Museum for their exhibition *Port Nelson Haven Ahoy!: A Story of Early Colonial Migration*.

2 paintings by Cedric Savage were lent to The Suter Te Aratoi o Whakatu for their exhibition *The Golden (Bay) Years: Cedric Savage*. The exhibition celebrated an artist who has been undeservedly overlooked in most New Zealand art histories.

CHRISTCHURCH

3 paintings by Leo Bensemann were lent to Christchurch Art Gallery for their exhibition *Leo Bensemann: A Fantastic Art Venture*. The exhibition was a comprehensive retrospective of an influential and talented Canterbury artist and designer.

8 paintings by Petrus van der Velden were lent to Christchurch Art Gallery for their exhibition titled *Van der Velden: Otira*. The exhibition explores Petrus van der Velden's intensely personal vision of the Otira Gorge and environs.

DUNEDIN

2 artworks by Don Driver were lent to the Dunedin Public Art Gallery for an exhibition titled *Driver '71 – '75*. The exhibition focused exclusively on Driver's relief works which he produced intensively over a five year period in the 1970s.

International

AUSTRALIA

The skeleton *Phar Lap* lent to Museum Victoria for display at Melbourne Museum in an exhibition titled *Phar Lap Reunion*. The exhibition was timed for the Melbourne Spring Racing Festival and celebrated the 150th anniversary of the Melbourne Cup and the 80th anniversary of Phar Lap's victory in the Melbourne Cup.

2 paintings were lent to Bendigo Art Gallery for their exhibition *Looking for Fairies: The Victorian Tradition*. The exhibition explored nature spirits in Victorian imagery.

A sculpture by Michael Stevenson was lent to the Museum of Contemporary Art in Sydney for their survey exhibition of Michael's work. The exhibition was simply titled Michael Stevenson.

USA

An archaic dog cockle shell hei tiki was lent to the Menil Collection for an exhibition titled *Upside Down Arctic Realities*. The tiki is used as a comparative example of those typical of Arctic societies.

RESEARCH

New Zealand

WHANGAREI

5 loans were made to an approved private researcher

49 specimens for a study of Cook Islands land snails

536 specimens for a study of snails from Niue

320 specimens for a study of fossil land snails of Northland

227 specimens for a study of snails from Northland sand dunes

918 specimens for a study of land snails of Stewart Island

AUCKLAND

2 loans were made to Auckland Museum Tamaki Paenga Hira

2 specimen lots were lent for a study of Moa Egg shells.

93 specimen lots of fishes from the Tuvalu voyage in 2008 were lent for identification.

263 squid specimens were lent to Auckland University of Technology for study by degree students.

5 loans were made to Landcare Research (Auckland) Manaaki Whenua

45 specimens for a taxonomic revision of species groups within the carabid beetle genus *Mecodema*.

1 specimen for systematic revision of genus *Xenophyes*.

135 specimens to investigate the taxonomy of several genera of the moth family Noctuidae.

1 specimen for taxonomic revision of all moss as part of the Defining NZ's Land Biota project.

1 specimen for taxonomic revision of 'Ramalina' lichen genus as part of the Defining NZ's Land Biota project.

1 specimen was lent to the University of Auckland for comparative anatomical research to examine similarities between *Callorhincus* basal cartilage and the nerve pathways of humans.

PALMERSTON NORTH

1 specimen was lent to Massey University (Alan Wilson Centre) for DNA sequencing for revision of the gastropod genus *Penion*.

WELLINGTON

A loan of 21 specimens was made to an approved private researcher for identification and systematic research on unidentified tanaidaceans (small, elongated crustaceans related to sand hoppers and slaters) from various localities in New Zealand, primarily Wellington Harbour. The research will contribute to publications on the Tanaidacea of New Zealand.

6 specimens were lent to Victoria University of Wellington for examination of several mite specimens.

2 loans were made to the National Institute of Water and Atmospheric Research [NIWA]

5 specimens were lent for taxonomic identification of tam-o-shanter sea urchins.

7 specimen lots for taxonomic research into the family Macrouridae as part of the EEZ Biosystematics project

CHRISTCHURCH

142 specimen lots were lent to AgResearch, Lincoln Science Centre for taxonomic and distributional studies on salticid, periegopid and zoropsid spiders.

6 loans were made to Landcare Research (Lincoln) Manaaki Whenua

3 specimens for taxonomic revision of *Hypericum* (in the St John's wort family) as part of the Defining NZ's Land Biota project.

8 specimens for taxonomic revision of pseudowintera (pepper tree group) as part of the Defining NZ's Land Biota project

18 specimens for a study of North Island specimens of *Spiranthes*

27 specimens for an identification updates of New Zealand Lemna specimens

103 specimens for taxonomic study towards the Moss Flora of New Zealand.

48 specimens for research clarifying the intra-New Zealand distribution of the species *Orthorrhynchium elegans*.

2 loans were made to the University of Canterbury

18 specimens for identification and taxonomic description of new hermit crab species from the northern Tasman Sea. (NORFANZ Expedition 2003)

ALEXANDRA

A type specimen was lent to Central Stories Museum & Art Gallery for designation of the lectotype from a syntype series and subsequent publication.

DUNEDIN

5 loans were made to the University of Otago

46 specimens for gene sequencing.

6 specimens for a study of freshwater limpets of the genus *Latia* and marine whelk from Norfolk Island

26 specimens for a study of hybridisation in intertidal snails

2 specimens for a study of intertidal soft bodied limpets

International

AUSTRALIA

18 specimen lots were lent to Australian Museum for a study of hardrotarsine theridiid spiders.

1 fish specimen was lent to CSIRO for taxonomic revision of the family Rajidae as part of the Biosystematics of NZ EEZ Fishes project.

1 insect specimen was lent to CSIRO for revision of genus *Scaptia* (Tabanidae: Diptera: Insecta).

5 Water Bear specimens were lent to Macquarie University to study the taxonomic relationship between *Echiniscus zetotrymus* and *Echiniscus curiosus*.

3 loans were made to the National Herbarium of New South Wales

11 specimens for a study of phylogeny and systematics of *Mitrasacme* and related genera.

4 specimens for a revision of Australian Lepidoziaceae.

233 specimens for a taxonomic study of *Radula*, *Lejeunea* and *Lopholejeunea*

2 loans were made to Queensland Museum

1 specimen was lent for a study of Queensland sponges

3 specimens for a study of sponge fragments for taxonomic revision

1 specimen was lent to the University of Ballarat to update the identification of Salmon's species of Collembola, for a faunistic survey.

514 specimens were lent to the State Herbarium of South Australia for a taxonomic revision of the genus *Euphrasia* in the family Scrophulariaceae.

BELGIUM

2 loans were made to the Institut Royal des Sciences Naturelles de Belgique

27 specimens were lent for revision of marine gastropods of the Typhinae (Muricidae).

3 specimens were lent for study of gastropods of family Cassidae.

CANADA

1 specimen was lent to the University of Manitoba for identification of species of flea from a rock wren.

DENMARK

2 loans were made to the University of Copenhagen

4 specimens for a revision of the family Zoarcidae; Ophidiidae; and Bythitidae.

3 specimens for taxonomic revision of the family Bythitidae as part of the Biosystematics of NZ EEZ Fishes project.

ENGLAND

6 specimen lots of molluscs were lent to Cambridge University for extraction of DNA to establish family relationships of the genus *Grippina*.

60 specimens were lent to the Natural History Museum for extraction of DNA.

FRANCE

9 specimen lots of Scorpion Fishes were lent to the Muséum National d'Histoire Naturelle for a global revision of the genus; identification and description of new taxa.

GERMANY

1 specimen was lent to Museum für Naturkunde for taxonomic revision of brachiopods.

52 specimen lots were lent to Ludwig-Maximilians-Universität München for identification of marine otoliths.

2 loans of 30 specimens were made to Universität Greifswald for a revision of freshwater snails

2 specimens were lent to Universität Hamburg for a description of a new genus of Tardigrada related to *Limmenius*

ITALY

1 specimen was lent to the Istituto di Geologia Marina, Consiglio Nazionale delle Ricerche for study of giant fossil bivalve from Niue.

JAPAN

2 loans were made to Kagoshima University Museum

9 specimen lots of Scorpion Fishes were lent to for comparison of New Zealand

Scorpaeniformes as part of a global revision of the genus; identification and description of new taxa.

6 specimens for taxonomic revision of the family Scorpaenidae as part of the Biosystematics of NZ EEZ Fishes project.

NETHERLANDS

4 specimens were lent to the University of Amsterdam for Comparative study of marine gastropods of the family Cassidae.

NORWAY

12 sponge specimens were lent to the Universitetet i Bergen for research

POLAND

17 specimens were lent to Museum & Institute of Zoology for investigation of the status of the New Zealand species *Phytodietus zealandicus* as part of a general study of the genus *Phytodietus*.

2 specimens were lent to the Zoological Institute of Wroclaw University to compare type material of *Xenylla novazealandia* with specimens of the same genus.

USA

7 specimens of *Plantago* were lent to the New York Botanical Garden Herbarium to be illustrated.

7 specimens were lent to Oregon State University for a revision of selected genera in the family Liparidae; identification and descriptions of new species.

3 loans were made to the Smithsonian Institution

7 specimens to the National Museum of Natural History for a description of new deep-sea gastropod of the family Turbinellidae.

2 specimens to the National Museum of Natural History for taxonomy on the congrid eels *Gnathophis* and *Ariosoma*.

15 specimens to the National Marine Fisheries Service for a taxonomic revision of New Zealand flatfishes.

9 specimen lots were lent to The Field Museum for identification of three louse species from New Zealand passerines.

41 specimens were lent to the University of California for a study of deep-sea limpets.

12 specimens were lent to the University of Hawaii at Manoa for a study of squid beaks.

1 specimen was lent to the University of Kansas for identification of one problematic Cusk Eel [*Opihidion*] towards the EEZ Fishes project.

1 specimen was lent to the University of Michigan for a study of bivalve DNA.

18 specimens were lent to the University of Minnesota for descriptions of new species of lice from petrels.

Appendix 2: National Services Te Paerangi

Workshops and Seminars

Te Papa provides training for people and groups working with taonga, and volunteering or working in galleries and museums throughout New Zealand.

Region	Topic	Poutama/Step
Auckland	Art Handling	3
	Conservation for Non-Conservators	2
	Developing Object Stories for your organisation	1
	Fred Dust: Design Thinking Masterclass	3
	Making \$ense of sustainability	1
	Nick Poole: 'United we stand: opportunities for museums worldwide' seminar	-
	Project management in a Museum Context	3
	Strategic exhibition programming	3
Bay of Plenty	Using and evaluating cost effective online tools	2
	Writing a crystal clear collection policy	1
Blenheim	Building Your Team	2
	Maori in Museums & Galleries	1
	Online tools	
Central Otago	Innovative Interpretation	2
Christchurch	Fred Dust: Design Thinking Masterclass	3
	Nick Poole: 'United we stand: opportunities for museums worldwide'	-
	Making \$ense of sustainability	1
Dunedin	Fred Dust: Design Thinking Masterclass	3
	Making \$ense of sustainability	1
	Nick Poole: 'United we stand: opportunities for museums worldwide'	-
	Project management in a Museum Context	3
	Strategic exhibition programming	3
Gisborne	Making \$ense of sustainability	1
Manawatu/Wanganui	Supporting and guiding your volunteers	1
	Using and evaluating cost effective online tools	2
Nelson	Maintaining a base for community support in a fast changing world	2
North Canterbury	How to protect your museum/gallery assets without a big budget	1
North Otago	Conservation for non-conservators	2
	Writing a crystal clear collection policy	1
Northland	Interpretation: Telling great stories	
	Affordable preventive conservation	1

South Canterbury	Writing a crystal clear collection policy	1
South Otago	Developing Object Stories for your organisation	1
	How to build great education resources without a big budget	2
Southland	Care of Textiles	1
	Writing a crystal clear collection policy	1
Taranaki	Building your team	2
	Developing Object Stories for your organisation	1
Thames/Coromandel	How to build great education resources without a big budget	2
	Writing a crystal clear collection policy	1
Waikato	Developing Object Stories for your organisation	1
Wairarapa	How to protect your museum/gallery assets without a big budget	1
	Maintaining a base for community support in a fast changing world	2
Wellington	Amanda Game Seminar: Making it in a digital world	-
	Curatorial Practice	3
	Fred Dust: Design Thinking Masterclass	3
	Making \$ense of sustainability	1
	Metal Care and Recognition	2
	National Services Barcamp: National Digital Forum planning workshop	-
	Nick Poole: 'United we stand: opportunities for museums worldwide'	-
West Coast	Online tools	1

Expert Knowledge Exchanges

The expert knowledge exchange offers a museum, art gallery, iwi or other cultural organisation the opportunity to host an expert from another organisation. The exchange involves placements for intensive one-on-one advice or workshops for the organisation and its staff.

Region	Museum	Objective
Auckland	Auckland Museum	Security
Auckland	Corbans Estate Arts Centre	Community support
Auckland	Lopdell House	Collection development strategy
Auckland	Papakura Museum	Exhibition design support
Balclutha	South Otago Historical Society	Connection with local community
Blenheim	Blenheim Museum	Maori in museums workshop
Chatham Islands	Chatham Island Museum	Collection management training
Chatham Islands	Moriaki Rakau Conservation Trust	Preventative conservation
Christchurch	Physics Room	Impact survey development
Dunedin	Blue Oyster Art Project Space	Sponsorship strategy
Gore	Eastern Southland Gallery and the Gore Historical Museum	Photography

Greymouth	Shantytown	Exhibition concept support
Hastings	Hastings Art Gallery	Art handling
Havelock	Havelock Museum	Collection audit
Invercargill	Southland Museum & Art Gallery	Care of textiles
Invercargill	Southland Post and Telegraph Communication Inc	Exhibition development support
Kapiti Coast	Mahara Gallery	Art design and fitout consultation
Kapiti Coast	Otaki Museum	Collection care and management
Kapiti Coast	Paekakariki Museum	Preventative conservation advice
Napier	Hawke's Bay Art Gallery	Visitor tracking
New Plymouth	Puke Ariki	Strategy planning advice
Northland	Hokianga Historical Society	New building development
Northland	The Kauri Museum	Preventative conservation
Otago	Waikouaiti District Museum Society Inc	Classification of taonga advice and support
Picton	Edwin Fox Society, Picton Historical Society and Marlborough Historical Society Inc	Education programme development
Picton	EcoWorld	Education programme development
Rangitikei	Hauiti	Digital mapping of taonga
Southland	Switzers Museum, Waikaia	Exhibition design support
Southland	Riverton Heritage – Southland Journey	Governance strategy
Southland	Riverton Museum	Care of textiles
Southland	Waikawa Museum	Care of textiles
Southland	Wyndham Historical Society	Security audit
Taranaki	Ngāti Ruanui Development Corp	Archives strategy
Tauranga	Tauranga Heritage Collection	Oral history
Timaru	South Canterbury Museum	Mount-making support
Waikato	Raglan Museum	Exhibition concept support
Waikato	Te Kowhai	Preventative conservation advice
Waikato	Waikato Health Trust	Past Perfect database support
Wellington	City Gallery	Upskill customer service staff in gallery context
Wellington	National Portrait Gallery	Photography
Wellington	Parliamentary Services	Bicultural approach to education
Wellington	Parliamentary Services	Taonga Māori collection management support
Wellington	Māori Women's Welfare League	Advice for display of taonga
Whanganui	Whanganui Regional Museum	Photography

Appendix 3: Collection Acquisitions for the year ended 30 June 2011

ART

Paintings – New Zealand

Maoris on a Riverbank by Frank Wright, oil painting, 305 x 495 mm (h x w, sight), not dated, gift of Marlene and Renée Colclough in memory of Irene Colclough

Ngā Toenga (daughter of Barrier Island Chief) by George F. Angas, watercolour on paper, 840 x 615 mm (h x w), 1844, purchase

Souvenir of the Boer War by M. Airey, oil on canvas, 820 x 1090 mm (h x w), c1902, purchase

Te Pehi Kupe, Warrior of the Ngati Toa Tribe by Sam Stuart, oil on canvas, 370 x 290 mm (h x w), 1906, purchase

Edith by Toss Woollaston, oil on cardboard, 480 x 430 mm (h x w, support), 1948, purchase

Les deux amies (The two friends) by Louise Henderson, oil on canvas, 740 x 560 mm (h x w), 1953, purchase

Untitled (kowhaiwhai painting) by Theo Schoon, tempera on cardboard, 1155 x 850 mm (h x l), c1957, purchase

Painting red by Milan Mrkusich, oil on canvas, 762 x 762 mm (h x w), 1968, purchase

Pocket full of rainbows by Seraphine Pick, oil on canvas, 2000 x 1650 mm (h x w, support), 2010, purchase

Paintings – International

Poedua (Poetua), daughter of Oreo, chief of Ulaietea, one of the Society Isles by John Webber, oil on canvas, 1445 x 925 mm (support h x w), 1785, purchase

A moko takahe by J.G. Keulemans, oil on canvas, 863 x 1118 mm (h x w), 1902, purchase

Works on Paper – New Zealand

Works on paper (5) by Toss Woollaston, various measurements, 1938–85, purchase

Sublunary wardrobe (3 works from), by Joanna Paul, chalk pastel on paper, 370 mm (support diameter), 2002, gift of the Friends of Te Papa

Aquarium (with sunglasses) and Aquarium (with bottles) by Nick Austin, acrylic paint on newspaper, 575 x 785 mm (h x w, each), 2009 and 2011, purchase

Works on Paper – International

An allegory of visual perception by Jan Saenredam, engraving, 241 x 181 mm (h x w), 1616, purchase

Banks Florilegium Parts XX to Part XXVII (complete set of New Zealand plants, 184 engraved plates) by Sydney Parkinson/Alecto Historical Editions Limited, measurements not available, 1769-70/1980-89, purchased with the assistance of the Friends of Te Papa

Fête à Ferrières no.2 by Anthony Gross, etching, 198 x 298 mm (image h x w), 1954, purchase

Sculptures and Decorative Forms

Necklace by Colin McCahon, woven threads and cut tin painted in enamel colours, measurements not available, 1949-53, purchase

Untitled by Gordon McAuslan, wood sculpture, 345 mm (height), c1950, purchase

Ceramic works (8) by Len Castle, various measurements and dates, purchase

Tribute to Hone Tuwhare by Jim Allen, installation, 2000 x 2000 x 2000 mm (h x w x d, overall), 1969/2010, purchase

Small Worlds by Jim Allen, installation, 2000 x 2000 x 4000 mm (h x w x d, overall), 1969/2010, purchase

Modern arrangements by L Budd (et al.), installation, various measurements, 1990, purchased from the Molly Morpeth Canaday Fund

Rings (5) by Karl Fritsch, gold, silver, granite, iron, diamond and brass, various measurements and dates, purchase

Steinhaufenring by Karl Fritsch, silver and coloured glass ring, 80 x 55 x 55 mm (h x w x d), 2006, purchase

My name in lights by Daniel Malone, neon light installation, 1140 x 2950 x 50 mm, 2006, purchase

Six silver bullets (one missing) II by Peter McKay, sterling silver brooch, 2007, purchase

New Twists (5 works from) by Pauline Rhodes, aluminium, wool and silk sculpture (1) and photographs (4), various measurements, 2008, purchase

Pendant, by Lisa Walker, measurements not available, 2009, purchase

Necklace and What Karl didn't take with him by Lisa Walker, mixed media necklaces, measurement not available and 400 mm (l), 2009-10, purchase

Handy Andy with red by Bill Culbert, light sculpture/assemblage, 310 x 600 x 90 mm (h x w x d), 2010, purchase

Photographs – New Zealand

Whole-plate negatives (11) depicting prominent nineteenth century chiefs, by various photographer, black and white gelatin negatives and gelatin glass negatives, various measurements and dates, gift of Roger Andrews

Bowen Fall - Milford Sound by Burton Brothers, albumen print, 213 x 287 mm (h x w), 1889; purchase

Māori-themed postcards (6) by various photographers and printers, gelatin silver photographs/postcards, various measurements, c1900, purchase

Black and white stereoscopic photographs and two leather bound photograph albums, various measurements and various dates, purchase

Lake Mapourika and Buddha image, National Museum Bangkok, Thailand by Brian Brake, gelatin silver print and type C print, 350 x 455 mm and 455 x 350 mm (h x w), 1951 and 1970, purchase

Black & white photographs (25) by Terry O'Connor, gelatin silver prints, various measurements and dates, purchase

Brian Brake film items and prints, various materials, measurements and dates, gift of Wai Man Raymond Lau

Cosmo flying disc I-IV by Darren Glass, toned gelatin silver print on printing-out paper, 252 x 203 mm (h x w, each), 1999-2009, purchase

Hangi rock, no 1-3 by Ross T. Smith, pinhole gelatin silver photographs, 122 x 97 mm (h x w, each), 2005, purchase

Ruby's room, portfolio of 30 inkjet colour photographs by Anne Noble, various measurements, 2010, purchase

Contemporary Māori

Digital Marae by Lisa Reihana, type C prints (6), 2000 mm x 1200 mm (h x w, approximate, each), 2007, purchase

Digital Marae by Lisa Reihana, digital videos (2), 2001 and 2008, gift of the artist

Groundswell by Lisa Reihana, eight monitor video installation, 2005, purchase

Te Pūtahitanga o Rehua by Reuben Paterson, animated video, 2005, gift of the artist

Shark, Angel, Bird, Ladder, by John Pule, oil paint, enamel, ink & polyurethane on canvas, 2000 x 4000 mm (h x w), 2008, purchase

Five works from the *Waka Huia* exhibition by Areta Wilkinson, jewellery made with sterling silver, gold, wood and muka (flax fibre), various measurements, 2008, purchase

Ruatepupuke and Hei Tiki Tipuna Wahine, by Stacy Gordine, hei tiki, measurements not available, 2009, purchase

Whakapapa Get Down on Your Knees (2), by Reuben Paterson, glitter and synthetic polymer paint on canvas, 4000 x 4000 mm (h x w), 2009, purchase

Back Bone by Shane Cotton, oil on canvas, 1400 x 1400 mm (h x w), 2010, purchase

Contemporary Art – International

Nauru, Notes from a Cretaceous World by Nicholas Mangan, mixed media installation including digital video, coral coffee table, collage and a modified cartoon, various measurements, 2009-10

Pacific Sediment part of *Nauru, Notes from a Cretaceous World* by Nicholas Mangan, found material in custom-built vitrine, 900 x 1380 x 740 mm (h x w x d), 2009-10, gift of the artist

Other

Periodicals: *New Zealand Potter* (33), 1958-1997, and *Pottery Quarterly - A review of Ceramic Art* (23), 1955-1962 gift of Peter Stichbury

Brian Brake interview with David Millar, audio tape, 4 June 1980, gift of David P. Millar

Material relating to the life, work, death and memorial service of Denis Cohn, 1987-2007, gift of Bill Vernon

The Field (Part II) by Gavin Hipkins, digital video, 2003-04, gift of the artist

HISTORY

Social and Political History – New Zealand

Letter to Mrs James Kemp at Kerikeri, unknown author, 80 x 142 mm (h x w), 1831, purchase

Two philatelic covers from the Land Wars period addressed to James Mouat VC, unknown authors, 80 x 140 mm (h x w), 1861, purchase

Letter addressed to Te Kooti whilst a prisoner at Waitangi, Chatham Island, author: Wi Kēpa, 52 x 114 mm (h x w), 1866, purchase

New Zealand Post Office Secretary's Despatch Box, maker: Wickwar & Co., 450 x 300 x 120 mm (w x d x h), c1870, gift of Martin Skerman

Fern album of pressed New Zealand ferns, maker: George K. Burton, 300 x 270 x 50 mm (h x w x d), c1877, purchase

Black beaded cape, wedding outfit, wedding dress, tea set, and accessories, various and unknown makers, various measurements and dates, gift of Lesley Askew

Bereavement card envelope sent from Dublin to Auckland, retrieved from the wreck of the s.s. Wairarapa, unknown maker, measurements not available, 1894, purchase

Whale shoe laces, maker: Dawbarn 50 x 160 mm (h x w, overall), c1900, gift of Martin Dunn

Free franking seals and front of a letter used by the Maori Council for postal services, maker: Government Printer, author unknown, various measurements, c1903, purchase

Glass beer bottle, maker: Campbell & Ehrenfried Company Limited, 305 x 83 x 83 mm (h x w x d), c1905, purchase

Hand-made cardboard toy policeman, maker: Sarah Ann McMurray, 530 x 180 mm (l x w), c1910, gift of Elizabeth McMurray

Philatelic items and social history ephemera relating to the participation of New Zealand and Pacific peoples in the World Wars, various measurements, makers and dates, purchase

Hand made cloth doll, WWI uniform buttons (2), hat pins (2), cloth badges and sleeves from WWI uniform (2), various makers, various measurements, 1914-18, gift of Marianne Abraham

World War I New Testament, maker: Oxford University Press, 98 x 68 x 15 mm (h x w x d), 1915, gift of Jennifer Twist

World War I embroidered souvenir cloth, unknown maker, 333 x 460 mm (h x l), 1915, found in collection

Coronation booklet, Royal Visit flags (3), skittles (13), makers: Fosh & Cross Ltd; unknown maker, various measurements, 1920s, 1953, gift of Cathy McColl and Barbara Walters

Items relating to swimming career of Jean Dickson (née Thomson), various makers, measurements and dates, gift of Margaret Bailey

Tabard and dress, makers: Hutt Repertory Theatre; unknown, 650 x 610 mm and 1240 x 440 mm (l centre back x w across shoulders), 1920s-1930s, gift of Hutt Repertory Theatre

Dresses (5), clutch purses (3), photographs (3), and ephemera from social events attended by Noela Cable, various makers and measurements, 1920-1960s, gift of Tricia Karl

Collection of 20th century social history objects, including 21st birthday material (46 items), various makers and measurements, 1920s-80s, gift of Leslie and Shirley Megget on behalf of Joyce Megget

Sack apron, unknown maker, 880 x 685 mm (h x w), 1930s, found in collection

Leather bag, maker: Disabled Soldiers Products, 265 x 380 x 60 mm (h x w x d), 1930s, gift of Jennifer Twist

Evening dress, maker: Flora MacKenzie, 1340 x 1450 mm (centre front l x centre back l), 1931, gift of Joan Schnauer

Framed embroideries with royal themes (2), maker: Ida Downard, 465 x 363 x 18 mm and 605 x 415 x 20 mm (h x l x d), 1935; 1950, gift of the Estate of Ida Downard

Chinese garments; cheongsams (4), man's coat, wedding blouse and trousers, unknown makers, various measurements and dates, gift of Mayme Chanwai

Armband from WWII volunteer services, unknown maker, 60 x 180 mm (h x l), 1939-45, found in collection

1940 New Zealand Centennial hei tiki badge/brooch, unknown maker, 28 mm (diameter), purchase

1940 New Zealand Centennial Souvenir towel, maker: Dri Glo Towels, 1150 x 555 mm (h x w), gift of Nancy Jury

Begg's musical scores booklet and Barbie dress-up set, makers: Charles Begg & Co. Ltd; Colorforms, 282 x 211 x 2 mm and 314 x 200 x 25 mm (h x w x d, overall), c1942, 1985, gift of Robyn Anderson

Killing knife, unknown maker, 270 mm (length), 1942, gift of Jocelyn Davidson and Fae Andersen

Poster, 'We Are United Nations', maker: Life, 990 x 660 mm (h x w), mid-1940s, purchase

Wedding dress made from WWII parachute silk, and photograph, maker: Gifford Family; unknown, 310 x 2120 mm (w across shoulders x l centre back), 374 x 281 mm (image h x w), 1946, gift of the Thomas Family

Wedding trousseau of petticoat and camisole made from WWII parachute fabric, maker: Josephine Gale, measurements not available, 1946, gift of the Gale family

Collection of dental nursing objects, maker: Beryl Findsen, various measurements, c1950, gift of Helen Barker

Anzac poppy school emblem, maker: Returned Services Association, 105 x 30 mm (h x w), 1951, gift of Rozan Beattie

Wedding dress and jacket, maker: Jean Saunders, 1290 mm (l) and 400 x 450 mm (w across shoulders x l centre front), 1951, gift of Ethel Burson

Souvenir plaque related to the Royal Tour of 1953-4, W. H. Bossons Limited, 360 mm (overall diameter), c1954, purchase

Record, 'All Blacks' Football Song', maker: His Master's Voice (N.Z.) Limited, 254 x 256 x 3 mm (h x w x d, overall), 1956, purchase

Sheet music, 'All Blacks' Football Song', composer: P.W. Gregory, publisher: Warren Musical Publications, 280 x 220 mm (h x w, overall), 1956, purchase

A tin of whitebait, maker: Sanford Limited, measurements: 73 x 65 mm (l x h), 1950s, gift of Graeme Stevens

Two glass milk/cream bottles, maker: Raetihi Pasteurised Milk Supply Co Ltd, Willowbank Dairy Ltd, 145 x 65 mm (h x d), 1950s, purchase

1950s cosmetics with case and a souvenir booklet from the 1953-4 Royal Tour, makers: Elizabeth Arden, Roberts Print 85 x 143 x 240 mm (h x w x d), 228 x 167 mm (h x l) 1950s, 1953, gift of an unknown donor

Girls' dresses and home-made dress-up costumes (21), various makers and measurements, 1950s-60s, gift of Shelley Venimore

Collection of childhood toys and material, various makers and measurements, 1950s-60s, gift of Christine Kiddey

Collection relating to Peter Newberry and his work as an entertainer, most notably Crunchy the Clown, various makers, measurements and dates, purchase

Set of rod puppets (6), maker: Burton Theatre of Puppets, various measurements, 1960s, gift of Upper Hutt City Library on behalf of Edna Burton

Wreath presented by Lyndon B. Johnson at the National War Memorial, unknown maker, 930 x 810 x 280 mm (h x w x d), 1966, gift of the Ministry for Culture and Heritage

Embroidered apron, art needlework booklet, felt bag, man's shirt, songbooks, cookbooks and metric information book, various makers, measurements and dates, gift of Rosanne Livingstone

Slide projector and box, makers: Aldis Limited; Don Viggers, 203 x 307 x 117 mm and 360 x 500 x 175 mm (h x w x d), 1960s, gift of Elizabeth Viggers

DIC store credit card, maker: Drapery Importing Company (DIC), 45 x 90 mm (h x w), 1960s, gift of Judith Aitchison

Pack of New Zealand souvenir playing cards, maker: G. B. Scott Souvenirs Ltd, 100 x 67 mm (l x w), 1970, gift of Don Limn

Watch worn by New Zealand comedian and entertainer, Billy T James, maker: Tissot, measurements not available, 1970s-80s, purchase

Two anti-nuclear banners and one placard, makers: New Zealand Nuclear Free Zone Committee; Lawrence Ross, various measurements, 1980-4, purchase

Anti-nuclear protest and Homosexual Law Reform badges (3) and related ephemera (3), various makers and measurements, 1980s, gift of Lucinda Blackley

Tea towel - women's equality, maker: The Wellington Clerical Workers' Industrial Union of Workers, 602 x 463 mm (h x w), 1980s, gift of Jan Noonan

Men's Swannndri-style jacket, maker: Betacraft (N.Z.) Ltd, 780 x 590 mm (h x w), 1980s, gift of Gerard McCarthy

New Zealand Forest Service jacket and hood, maker: Alliance Textiles Limited, 500 x 840 mm (w across shoulders x l centre back) and 340 x 320 x 45 (h x d x w), 1985, gift of Ian Trotman

Postcards from Devotion (4), maker: Sprung! Productions, various measurements, 1992-3, gift of Elizabeth O'Loughlin

Anzac poppies (4), maker: Returned Services Association, various measurements, 2000-11, gift of anonymous donors

A poster promoting the 'Hairy Maclary Show', maker: Maclary Theatre Productions, 1020 x 845 mm (l x w), 2001, gift of Maclary Theatre Productions

T-shirt designed by Karen Walker for Glassons and the Breast Cancer Research Trust, designer: Karen Walker, maker: Glassons, 500 x 600 x 20 mm (h x w x d, overall), early 2000s, gift of Stephanie Gibson

Single breasted suit, shirt and tie custom-made for Joe Lindsay, maker: Mandatory Limited, measurements not available, 2007, purchase

Series of posters about WWII in the Pacific (5), maker: Mat Hunkin, 1189 x 841mm (h x w), 2007-10, purchase

NZ Economic and Technological

Moulding plane, used for hollow beading or reeding, maker: John Lund, 240 x 162 x 30 mm (l x h x w), c1830, gift of William Cottrell

Bakelite hairdryer in original box, maker: L. G. Hawkins & Co. Ltd, 1620 mm (l including cord), 139 x 253 x 160 mm (h x w x d), 1950s, gift of Bobbie Meyer

Cream bottle tops (6), maker: Wainoni Dairy, 42 x 42 x 1 mm (h x w x d), 1950s, gift of Bill Earle

Household items and ephemera (8), various makers and measurements, 1950s-1980s, gift of Thelma Weston

New Zealand Railways luggage labels (5), maker: New Zealand Government Railways, various measurements, c1960 and 1980, gift of Kathleen Kelly

Philips black and white television set, maker: Philips Electrical Industries of New Zealand Ltd, 850 x 620 x 400 mm (h x w x d), 1960s, gift of Nick Koenig

International History and Culture

First World War items connected to Captain George M Turner, 15th Royal Warwickshire Regiment, Birmingham, various makers and measurements, 1911-22, found in collection

Poster, 'The British Commonwealth in Arms', maker: H. M. Brock, 764 x 509 mm (h x w), 1918, purchase

WWII posters (2), maker: A. T. Peel; unknown, 810 x 610 mm (h x w), 1940-2, purchase

British cloth escape maps (2) from WWII, maker: Bartholomew, 540 x 475 mm and 525 x 625 mm (l x w, overall), c1943, gift of Valerie Carson

Mac Plus computer, maker: Apple Computer, Inc, various measurements 1986, gift of Don Long

Applied Art and Design – New Zealand and International

Hand painted Berlin wool work patterns on graph paper (2), makers: Seiffert & Co., Hertz and Wegener, 410 x 358 (h x w), 289 x 521 (h x w), 1800s, gift of the Estate of June Starke

Double Hemisphere Globe Sampler, maker: Anne Margaret Hammond, 722 x 419 mm (h x w), 1812, purchase

Pheasant feather cape and maternity outfits (2), maker: unknown; Pacemaker, various measurements, c1830 and c1930, purchase

Shawls (2) and sampler, various makers, various measurements and dates, gift of Janet McLeod Forbes

Collage of artificial flowers in gilt frame, maker: Frances Bell, 455 x 455 x 45 mm (w x h x d), c1860, gift of Alan Turner

Navy blue wedding gown and framed portrait, unknown makers, 278 x 195 mm (image h x w), 410 x 660 x 1350 mm (w across shoulders x waist circumference x centre back), c1870, late nineteenth century, gift of Virginia Atkin

Ewer, rocking chair, silver dish and spoon, makers: Linthorpe Art Pottery c1880; David Haig c1990; Omar Ramsden 1927 and 1937, various measurements, purchase

Nursing chair, unknown maker, 720 x 750 x 420 mm (h x w x d), c1885, gift of Carol Hinton

Royal Doulton vases (5 pairs, 1 single) and jardinière (1) maker: Royal Doulton Company Ltd; c1885-c1925, various measurements, purchased with Charles Disney Art Trust funds

Pair of lacquered kauri vases from the NZ & South Seas Exhibition, Dunedin, unknown maker, 1925-26, purchase

Cufflinks and silver spoons (set of 6), makers: Edward Price (attributed) and Edith Morris, 88 x 24 x 5 mm (l x w x d) and 85 mm (l), c1896 and 1950, purchase

Cape, muff and necklace, makers: unknown (2); James Johnstone, various measurements, various dates, purchase

Necklace, gold and turquoise, maker: Archibald Knox for Liberty; various measurements, 228 x 48 x 5 mm (h x w x d), 1899-1905, purchased with Charles Disney Art Trust funds

Needlelace collar and three caps, unknown makers, various measurements, late nineteenth and early twentieth centuries, gift of Robin Seymour

Furniture handles (2) embossed with representations of Māori men and New Zealand flora, unknown maker, 35 x 93 mm (h x w), c1900, purchase

Lace collar, lace bag, and other lace items (8), unknown makers, various measurements, early 1900s, gift of Margaret Hunt

Edwardian cream dress and black camisole, unknown makers, 1400 x 385 mm (l centre back x w across shoulders), 360 x 410 mm (l centre back x w across shoulders), 1900-9, gift of Sue Macdonald

Zardozi embroidered bodice, unknown maker, 315 x 460 mm (l centre back x w across shoulders), c1910, gift of Anne Kirker

Stained glass window, maker: William Morris and Company; designer J. H. Dearle, 991 x 445 x 29 mm (h x w x d), 1910-1935, purchased with Charles Disney Art Trust funds

Heart-shaped pendant, and side chairs (2), makers: unknown; Roy Lippincott, various measurements, 1936 and 1940-45, purchase

Renaissance costume (1), dress (1), hats (2), drawstring bag (1), and man's dress suit with morning coat, various makers and measurements, 1915-70, gift of Mary-Annette Hay

Commemorative brooch given to the Hon J.G. Coates, Minister of Public Works, unknown maker, 45 x 53 mm (h x w), 1924, purchase

Machine-made lace yoke and a pair of embroidered silk baby booties, unknown makers, 1030 x 240 mm (l chest circumference x h overall), and measurements not available, unknown date; 1920s, gift of Gaye Law

Embroidered handbag made from recycled materials, unknown maker, 365 x 215 x 10 mm (h x w x d), 1920s-30s, gift of Patricia Whitmore

Green shoes, black beaded dress, cigarette holder, and beaded tassel, unknown makers, various measurements, 1920s-30s, gift of June Cambie

Arts and crafts-style necklace, maker: Edith Morris, 76 x 760 mm, c1930, purchase

Infant's cream art silk crocheted jacket and bonnet, and rose pink art silk cape and bonnet, maker: Mary Barker, various measurements, early 1930s, gift of Frances M. Stone

Silk coat with Japanese or Chinese embroidery, unknown maker, 1240 x 430 mm (h x w, centre back), c1934, gift of Shirley Macalister

Joyce Weeber 21st birthday photo and speech notes, makers: Andrew Stanley; Gordon Webber, 295 x 207 x 7 mm (h x w x d) and 205 x 132 mm (h x w), 1935, gift of Leslie and Shirley Megget

Shoe ornaments (4), shoe buckle (1), and belt buckle (1), makers: LW; unknown, various measurements, 1930s, gift on behalf of the late Geraldine Sanger

Childrens' tea sets (2), makers: Pixytoy; Fairymark, various measurements, 1930s, gift of Dawn Askew

Dressmaking samples (18), embroidery sample (1), and ribbon (1), maker: Joanna Ladds; unknown maker, various measurements, 1930s-50s, gift of Joanna Ladds

Knitted cardigans (2), clutch purse, and kitchen accessories, unknown makers, various measurements, 1930s and 1950s, gift of Carol Rothschild

Samples of wallpaper, friezes and borders (151), and sample books (7), various makers and measurements, 1930-70s, gift of Ray and Betty Weeber

Posters 'Jockey', 'Overcoat Week', and 'New Zealand Ally Down Under', makers: Railways Studios; Hallenstein Brothers; Duco, various measurements, 1920s-1940s, purchase

Pair of 'Vita-Bloom' sheer stockings, maker: Avon, 875 x 165 mm (h x w), c1940, gift of Jo Torr

Conscientious objector items; brooches (3), heart pendant, and piggy money box, maker: Morice Peacock, various measurements, early to mid-1940s, gift of Vonda Houppapa

Carved and painted New Zealand folk art table, maker: Jane Brenkley, 580 mm (h), 1943, purchase

Ceramics (15) previously owned by Doreen Blumhardt, various makers and measurements, 1945-2001, purchase

Suitcases (3), cosmetics case, cocktail dresses (7 including 3 with matching jackets), coat, suit, jacket and day dress, various makers, measurements and dates, gift of Marian Redwood in memory of Ida Josephine Fownes

New Zealand-made art deco-style brooches (2), and bracelet (1), unknown maker, various measurements, 1940s, purchase

School desk inkwell, unknown maker, 40 x 45 x 45 mm (h x w x d), 1940s, gift of John Hastings Gibson

Modernist-style chairs (2), maker: Cedric Firth, 850 x 600 x 740 mm (l x w x h), c1950, gift of Hilda Firth

Footed bowl, maker: Len Castle, c1950; chairs (pair), dining table with chairs (4), and 'Astoria' chair; maker: Garth Chester, c1955; Floor standing uprighter, standard lamp, and bowl, maker: Jon Crichton 1955-60; armchair and chairs (pair), maker: Jon Jansen, 1955-60; chairs (pair) maker John Hughes, 1971, various measurements, purchase

Wedding dress, maker: Thomson's Silk Shop, 1175 x 390 mm (l centre back x w across shoulders), 1955, gift of Margaret Alington

Feltex souvenir rug showing Lake Taupo, maker: Feltex Carpets New Zealand Limited, 1410 x 688 mm (h x w), 1958, purchase

Pedestal bowl and sauce bottle, 1950s maker: Frank Carpay, 207 x 62 mm and 98 x 222 mm (h x d), 1950s, purchase

Pair of mens' plastic sandals, maker: Kay-Dees, 279 x 110 x 95 mm (l x w x h), 1950s, gift of Ian Franklin

Felt hat, milliner: May Adams, commissioner: Drapery Importing Company (DIC), 280 x 140 x 250 mm (l x h x d), 1950s, gift of Julie Bremner

Travel rugs (2), maker: Kaiapoi Woollen MFG, 1885 x 1400 mm and 1930 x 1420 mm (l x w), 1960s, purchase

Fur stole, fur collar, womens' outfit (dress and jacket), handbag, and shoes (pair), various makers and measurements, 1950s-80s, unknown source

Ceramic teapot, six-place ceramic coffee set, and square stoneware bottle vase, makers: Lucie Rie; Lucie Rie and Hans Coper; Shoji Hamada, various measurements, c1958; c1960; date unknown, purchase

Printed day dress, maker: Horrockses Fashions, 960 x 365 mm (l centre back x w across shoulders), c1960, purchase

Potter's equipment and photographs from the Doreen Blumhardt Estate, various and unknown makers, various measurements, various and unknown dates, gift of the Blumhardt Foundation

Jumpsuit, day dress, bikini, and evening dress, makers: Thornton Hall; Horrockses Fashions; Canterbury of New Zealand Ltd; Patrick Steel, various measurements, c1982; c1960; 1965-1975; 1985-1992, purchase

El Jay two piece suit and woollen Christian Dior by El Jay dress, makers: El Jay, Christian Dior, measurements not available, 1963; unknown date, gift of Anna Adams

Pink/red two piece (jacket and dress) and orange/red dress, makers: Emma Knuckey; Bruce Papas, various measurements, 1960s, 1965-70, gift of Mrs Doreen A. Cameron

HANZ pub glasses (2), maker: Crown Crystal Glass, 129 x 69 x 69 mm (h x w x d, both), mid-1960s, purchase

Box of stockings, maker: Lane's Hosiery, 249 x 190 x 12 (h x w x d), 1968, gift of Roberta Wilks

Honeymoon dress, maker: Patricia Olliff, 790 x 325 mm (l centre back x w across shoulders), 1969, gift of Patricia Olliff

Dresses (3), skirt, and suit, various makers and measurements, 1960s-90s, gift of Rachael Collinge

Blue and white striped bikini, maker: Jantzen, 350 x 210 mm (h x w), 1960s-70s, gift of Dorothy MacFarlane

Needlepoint waistcoat and designer's notebooks (2), maker: Lyndsay Brock, various measurements, c1970, gift of Lyndsay Brock

Tapestry belt, maker: Lyndsay Brock, 815 x 80 mm (l x w), 1973-4, gift of Lyndsay Brock

Wedding ensemble of crocheted skullcap, dress, and hand-embroidered robe, maker: Brenda Lazelle, various measurements, 1972, gift of Brenda Lazelle

Woman's dress; maker: Michael Mattar, 1130 x 415 mm (l x w, centre front), c1973, gift of Sally Switzer

Ceramics (3), maker: John Parker, various measurements and dates, purchase

Woollen New Zealand-made jerseys (2) and crimplene pantsuit, maker: Kowhai Knitwear and Miss Deb, various measurements, 1970s, gift of Christine Moir

Women's girdle (2), makers: Mayes, Dowd Association (NZ) Ltd, 510 x 473 x 20 mm and 540 x 485 x 20 mm (h x w x d), 1970s, gift of Paul Barber

Ensembles (5) and items (20) relating to Michael Mattar's career, maker: Michael Mattar, various measurements and dates, gift of the Mattar family and Henk Dewolf

Pepper rasp, pepper mill and salt mill, various makers and measurements, 1979, gift of Walter Cook

Crown Lynn research material, collector: Olive Hale, 1980s, purchase

Ultra Suede coat, maker: El Jay, size 10, c1980, gift of an unknown donor

Green and purple silk caftan/dress, maker: Kerrie Hughes, 1140 x 1500 mm (h x l), 1985, gift of Bronwyn Simes

Commemorative RNZAF plate, maker: Spode, 411 x 196 mm (h x w), 1987, gift of the Royal New Zealand Air Force

Black and white leather outfit, maker: Kim Fraser, various measurements, 1987, gift of Vaughan Crimmins on behalf of his late wife Pauline Crimmins

Hand knitted woollen pictorial jersey, unknown maker, 680 mm (h), late 1980s, gift of anonymous donor

Jersey with detachable sleeves, maker: attributed to Malcolm Harrison, 528 x 550 (l x w, centre front) c1990, gift of the Estate of Galvan Macnamara

Commemoration quilt and folder of notes, maker: National Council of Women of New Zealand, 1780 x 2450 x 10 mm and 305 x 235 x 25 mm (h x w x d, overall), 1990, gift of National Council of Women of New Zealand

Men's ties (3) and a pair of braces, maker: Rixon Groove, various measurements, early 1990s, gift of Stefan Sepanaho

Model of NZL32 yacht, maker: Ken Gardiner, 1270 x 855 x 220 mm (h x w x d), c1995, gift of Jim Hoare, Auckland

Air New Zealand Rugby World Cup decal print, maker: Air New Zealand, 421 x 297 mm (h x w), 1999, gift of Air New Zealand

Kete 'NZ Four' from London Fashion Week show, unknown maker, 505 x 530 mm (l x w), 1999, gift of Carolyn Enting

Griffin's Millennium Biscuit container, maker: Griffin's Foods Limited, 262 x 89 mm (h x diameter), 2000, gift of Griffin's Foods Limited

'Fun shirt', maker: Booker Spalding, 750 x 56 mm (h x w, centre back), c2000, purchase

'Lavish Silk Thread Louis XVI Style Diamond Necklace', maker: Sandra Bushby, 200 x 150 x 30 mm (h x w x d, overall), 2006, purchase

Fold/form origami dress and T-shirt, maker: Camille Howie, 930 x 330 mm and 522 x 575 mm (l x w, centre front), 2007, purchase

Scarves (7), maker: Cybèle Wiren, various measurements, 2007, gift of Cybèle Wiren

Ephemera relating to Cybèle Fashion label: postcards (9), flyers (2) and a 'look book', maker: Cybèle Wiren, Brendan Callaghan 2007-8, gift of Cybèle Wiren

Brooches (4), maker: Jane Dodd, various measurements, 2008-10, purchase

Bondage and Discipline on a Paris Plate from the installation *Après les Baleines* (ceramic installation, 9 pieces), maker: Richard Stratton, various measurements, 2011, purchase

Glazed ceramic of Ken and Ken (Topp Twins characters) in Toby jug form, maker: Paul Rayner, 325 x 250 x 150 mm (h x w x d), 2011, purchase

MĀORI

Toki (adze blade preform), unknown maker, 350 x 62 x 35 mm (l x w x d), unknown date, purchase

Niho-rei-paraoa (sperm whale tooth pendant), unknown maker, 96 x 38 mm (l x w), unknown date, purchase

Ta whakairo (carving mallet), unknown maker, 270 x 50 x 30 mm (h x w x d), unknown date, gift of the Estate of Peter Faulke

Mere pounamu 'Whakaae-whenua', unknown maker, 385 x 112 mm (l x w), unknown date, purchase

Red toki pounamu (nephrite adze blade), unknown maker, 55 x 40 x 8 mm (l x w x d), unknown date, purchase

Taonga (10 lots) ex Webster collection, various and unknown makers, various measurements, various and unknown dates, purchase

Kapeu (ear pendant), unknown maker, 120 mm (l), unknown date, purchase

Taiaha with tauri (collar) of feathers, raupo, and awe (dog hair tassels), unknown maker, 2060 mm (l), unknown date, purchase

Pare (door lintel), unknown maker, 1400 x 530 mm (l x h), 1850-1900, gift of the Estate of Jean-François Lauprêtre

Rāpaki named 'Rongomai', maker: Karl Leonard, 510 x 1040 mm (h x w, approx), 2006, purchase

Poi tāniko named 'Ngā pumanawa e waru - the eight attributes of Te Arawa', maker: Karl Leonard, 123.94 x 65.37 mm (h x w, approx), 2009, purchase

PACIFIC

Pacific in New Zealand

Coconut vases (2) and a pair of earrings, unknown makers, various measurements, 1980s and 1990s, gift of Vaoiiva Akeli

Silver Ferns netball skirt and top worn by Bernice Mene, maker: Adidas, 1130 x 410 mm and 740 x 560 mm (h x w), 1992-2002, gift of Netball New Zealand

Manu Samoa rugby blazer worn by Opeta Palepoi, unknown Fijian maker, 820 x 610 mm (h x w), after 1995, purchase

Hip Hop ephemera, various makers and measurements, 2000-3; unknown dates, gift of Sean Mallon

T-Shirts from the exhibition 'Respect - Hip Hop Aotearoa' (6), various makers and measurements, 2003, purchase

Salusalu (neck wreath), unknown maker 1240 mm (l), date unknown, gift of Kelera Uluiviti

Pacific International

Chimbu (Simbu) battle shields, unknown makers, measurements not available, unknown dates, purchase

Fijian tabua (whale tooth necklace), unknown maker, 160 mm (length), 1800s, purchase

Replica tabua (whale tooth), unknown maker, 170 x 65 mm (l x w), 1990s, purchase

Samoaan tabua (whale tooth necklace), siapo (tapa cloth), pate (drum), drum stick, opium scale and cover, Tongan mat, Fiji Police badge, various unknown makers, various measurements, various and unknown dates, gift of Graeme Dyer

German Samoa hand-held stamp, unknown maker, 80 x 50 x 45 mm (h x w x l), c1900, purchase

Pan-American Tahiti and Hawaii advertising posters (2), maker: Pan-American Airline, 890 x 550 mm and 880 x 550 mm (h x w) c1950, purchase

Siapo (tapa cloth) from Wallis and Futuna Islands, unknown maker, 1820 x 910 mm (l x w), 1960s, purchase

Siapo mamanu (tapa cloth), maker: Mary Pritchard, 2440 x 3660 mm (w x l), c1970, purchase

O le Tusi FAALUPEGA o Samoa (collection of salutations), maker: Malua Printing Press, 145 x 109 x 13 mm (h x w x d), 1981, gift of Safua Akeli

Tivaevae (2) 'Rejection' and 'Tropical Garden', maker: Andrea Eimke, 1275 x 1105 mm and 1140 x 925 mm (l x w), 1987-8, purchase

Tivaevae (2) 'Flamboyant Flowers' and 'Flower Garland', makers: Andrea Eimke, Tini Tivini and Teremoana George, 2400 x 2800 mm and 2800 x 1000 mm (l x w), 2008, purchase

Sari and choli, maker: Nirmala Balram, 3195 x 1065 mm and 460 x 340 mm (w x l), 2005, purchase

Hekesi (tie) made from tapa, maker: Sione Tuita, 735 x 87 mm (h x w), 2009, gift of Reverend Tevita Taufalele

Suka Siti (Sugar City), makers: Robin White, Bale Jione and Leba Toki, various measurements, 2009-10, purchase

NATURAL ENVIRONMENT

Invertebrates

Robert Pilgrim Flea Larvae Collection (10,000 slides), collected 1983-2010, gift of Joy Pilgrim

Spiders from the family Synotaxidae, collected 2000-7 (16 specimens), field collection

Whelk specimen from Coromandel Peninsula, collected 2007, gift of Monalisa Cachuela Palacio

Introduced terrestrial molluscs, (7 lots), collected 2007-8, gift of Gary Barker

Marine mollusc specimens, (4 lots) collected 2007-8, gift of Robert Gauldie and Chris Paulin

New Zealand molluscs from North Island (903 lots), collected 2007-9, gift of Phillip Parkinson

Marine molluscs from Tasman Bay (11 lots), collected 2008, gift of Rodney Asher

Molluscs from Macquarie Ridge (24 lots), collected 2008, gift of National Institute of Water and Atmospheric Research

Freshwater mussels from south of Featherston (1 lot), collected 2008, gift of Mark Fenwick

Freshwater mussel from Lake Onoke, Wairarapa, collected 2008, gift of Jenny Whyte

Freshwater mussels from Blenheim (1 lot), collected 2008, gift of Mark Taylor

Terrestrial molluscs from Chatham Islands suitable for DNA extraction (3 lots), collected 2008, gift of Brian Fitzgerald and Phil Sirvid

Terrestrial mollusc specimens from Timaru and Oamaru (9 lots), collected 2008-9, gift of Bruce Marshall

Terrestrial molluscs from the South Island, (12 lots) collected 2008-9, gift of John Nunn

Terrestrial and marine molluscs from Northland, (76 lots), collected 2008-9, gift of Fred Brook

Sequenced voucher specimens of Mollusca (42 specimens), collected or received 2008-10, gift of Hamish Spencer

Marine molluscs mostly from Stewart Island, (16 lots), collected 2009, gift of Patricia Lakeman

Whelks and volutes (11 lots), collected 2009, gift of Ministry of Fisheries, Wellington, and MAF Observer Scheme

Terrestrial molluscs mostly from the North Island, (65 lots), collected 2009, gift of Bruce Marshall

Scallops from Tawharanui Peninsula, Jones Bay (1 lot), collected 2009, gift of Severine Dewas

Marine mollusc from the Wellington west coast, collected 2009, gift of Lorraine Foster

Terrestrial molluscs from the South Island (26 lots), collected 1997-2009, gift of Mike Bowie

Marine mollusc from St Clair Beach, Dunedin, suitable for DNA extraction, collected 2009, gift of Ceridwen Fraser

Marine molluscs from Sub-Antarctic Islands, including specimens suitable for DNA extraction (34 lots), collected 2009, gift of Debbie Freeman

Marine and terrestrial molluscs from the Wairarapa (2 lots), collected 2009, gift of Pat Enright

Marine mollusc from Tunnel Island, suitable for DNA extraction, collected March 2009, gift of Sean Cooper

Marine mollusc from Bounty Islands suitable for DNA extraction, collected 2009, gift of Don Neale

Land snail from Karori, Wellington, collected April 2009, gift of Rodney Allan

Freshwater mollusc from Pahiatua, collected 2009, gift of Chris Paulin

Terrestrial molluscs from Eastbourne – Lowry Bay area, (44 lots) collected 2010, gift of Phillip Parkinson

Pahoroides and thomisid spiders from Northland (138 lots), collected 2010, field collection

Vertebrates

Skull, mandibles and teeth of two male Southern Elephant seals, collected 2002, gift of the Department of Conservation (Otago Conservancy Office)

Near new-born killer whale, collected 2007, gift of Te Runanga o Makaawhio and the Department of Conservation (West Coast Conservancy)

Gray's beaked whale head, flipper, ovaries, stomach and foetus, collected 2009, gift of Te Runanga o Ati Awa ki Whakarongotai and the Department of Conservation (Waikanae Area)

Whole juvenile Andrew's beaked whale, collected 2010, gift of Te Atiawa, Ngati Tama, Ngati Rarua (Mana Whenua ki Mohua) and the Department of Conservation (Golden Bay Area Office)

Intact juvenile Pygmy right whale, collected 2010, gift of Ngati Kahu and the Department of Conservation (Kaitiāia Area Office)

Head and baleen from an Antarctic Minke whale 'Te Kauika', collected 2010, gift of Ngati Waewae and the Department of Conservation (Hokitika Area Office)

Birds

Bird specimens (4), Goosander, Eurasian Stone Curlew, Eurasian Curlew, Herring Gull, exchange

New Zealand and foreign bird skeletons and wings (334 specimens), received 2008-11, gift of the Department of Conservation via Massey University

Fossils

Fossil petrel (seabird) remains from Ohawe Beach, Taranaki, collected 2006, gift of Dave Allen

Fishes

Tuvalu Fishes (Reef & Deep-water), (520 specimens), collected 2008, field collection

Botany

Box of black and white photographs and ephemera (relating to Te Papa's botany collection), collector: Ellen Heine, c1930s, gift of Gillian Alfredson

Dennis Leigh's collection of British vascular plants (142 specimens), collected 1931-33, gift of Rebecca Bowater

Images of notes from the establishment of Te Papa's iwi planting area, author: Robert McGowan, various dates, gift of Robert McGowan

Lichens collected from Wilson's Bush, Otari (191 specimens), collected 2006-8, gift of Barbara Polly

General marine algae from Otago Harbour (approx. 45 specimens), collected 2009, field collection

New Zealand Short-tail bats, (81 specimens), received 2010, Gift of the Department of Conservation

Naturalised Vascular Plants (and other miscellaneous plant specimens) from Northland, Coromandel, and Central North Island (approx. 223 specimens), collected 2009, field collection

Rhododendron cultivated in New Zealand (approx. 200 specimens), collection dates unknown, gift of Ahmed Fayaz

Vascular plants and mosses from northern Wairarapa: Puketoi, Pongaroa, Akitio, (approx. 482 specimens), collected 2010, field collection

Lichens, liverworts, and mosses from Southland's Longwood Range and surrounds, as part of the annual John Child Bryophyte & Lichen Workshop, (277 specimens), collected 2010, field collection

DEACCESSIONS

VHS video tapes (11) from the Annie Bonza Archive (Te Papa registration numbers CA000914/001/0001-11) for disposal because of poor condition; digital preservation copies retained

The Mr and Mrs Beresford Maunsell Collection of art and history objects (36 lots/91 individual items) for transfer to Aratoi, Wairarapa Museum of Art and History

W F Gordon photograph album *Some soldiers of the Queen who fought in the Maori Wars and other notable persons associated therewith*, circa 1900, (Te Papa registration number AL000076), for transfer to Puke Ariki

Sextant associated with Matiu/Somes Island made by Karl Schroder, circa 1942 (Te Papa registration number GH006498), for transfer to the Department of Conservation (Wellington Conservancy)

Appendix 4:

Publications and Conference Presentations

* = Mātauranga Māori content

Popular Articles (not externally peer reviewed)

Natural Environment

Meudt, H.M. (2010). Book Review: Schuh, Randall T. and Andrew V. Z. Brower. 2009. *Biological Systematics: Principles and Applications* (second edition). Cornell University Press, Ithaca, USA. 311 pp. *The Quarterly Review of Biology* 85: 503-504

* Paulin, C.D. (2010). The lost art of fishing. *New Zealand Geographic* 104: 90-101

Perrie, L.R. (2010). A new species of fork fern – the nationally critical *Tmesipteris horomaka*. *Trilepidia* 80: 3

Perrie, L.R. (2011) *Hypericum*. *Manawatu Botanical Society Newsletter* 43: 4-5

Perrie, L.R. (2011) Conservation implications for the geographic distribution of genetic variation: lessons for and from fierce lancewood. *Trilepidea* Mar-11: 88

Perrie, L.R. (2011) An updated, annotated species list for the ferns of 'Eua, Tonga. *New Zealand Botanical Society Newsletter* 103: 9-14

Perrie, L.R. (2011) New Names for New Zealand Ferns from Christenhusz et al. (2011). *New Zealand Botanical Society Newsletter* 104: 15-17

Roberts C.D. and A.L. Stewart (2010) Bigscale pomfret. *New Zealand Fishing News* 33(8): 36

Roberts, C.D. (2010) Juvenile eyebrow perch. *New Zealand Fishing News* 33(12): 36

Roberts, C.D. (2011) Billfish identification. *New Zealand Fishing News* 34 (1): 36

Roberts, C.D. (2011) Spotted stargazer. *New Zealand Fishing News* 34 (3): 36

Roberts, C.D. and A.L. Stewart (2010) Stargazers. *New Zealand Fishing News* 33(9): 36

Shepherd, L. and L. Perrie (2011). Distinguishing *Blechnum triangularifolium* and *Blechnum novae-zelandiae*. *Manawatu Botanical Society Newsletter* 44: 7-8

Speeden, G. and R. Webber (2010) Spiders of the sea. *Seafood New Zealand* 18(6): 24-27

Stein, D and Webber, W.R. (2010) Carcinophily, or "what's love got to do with it?" *Seafood New Zealand* 18(8): 26-29

Stewart, A.L. (2011) Man-of-war fish. *New Zealand Fishing News* 34 (2): 36

Stewart, A.L. (2010) Richardson's Boarfish. *New Zealand Fishing News* 33 (7): 36

Stewart, A.L. (2010) Slender Roughy. *New Zealand Fishing News* 33 (11): 37

Stewart, A. (2011). Sawtail surgeonfish. *New Zealand Fishing News* 34 (5): 38

Taylor, G., Tennyson, A., Ismar, S., Gaskin, C. and K. Baird (2011). *Seabirds of the Kermadec Islands*. Pp. 46-47 *In: Deep - talks and thoughts celebrating diversity in New Zealand's untouched Kermadecs*. Pew Environmental Group. 93 pp.

Tennyson, A.J.D. (2010). Seabirds in the 2010 New Zealand bird checklist. *Notornis* 57: 4-10

History

Fitzgerald, M. (2011). Fit for a 'King'. *The Dominion Post* 6 January 2011

Gibson, S. (2010). Enriching Fashion: An Eye For Detail: Golden Dress. *Open Eyes, Friends of Te Papa Newsletter* 100: 3

Gibson, S. (2010). Cheers for beers. *The Dominion Post* 28 December 2010

Gibson, S. (2010). Boning up. *The Dominion Post* 31 December 2010

Regnault, C. (2010). All that glitters. Published by Andrea du Chatenier - artist publication.

Regnault, C. (2010). Moments in time. *Viva magazine, The New Zealand Herald* 10 October 2010

Ross, K. (2010). Slice of Heaven. *Open Eyes, Friends of Te Papa Newsletter* 100: 1, 3.

Ross, K. (2011). Into the groove. *The Dominion Post* 5 January 2011

Ross, K. (2010). An exhibition veteran. *The Dominion Post*. 27 December 2010

Ross, K. (2011). Serving up a Slice of Heaven. *Phanzine: newsletter of the Professional Historians' Association of New Zealand / Aotearoa* 17(1): 7-9.

Townsend, L. (2010). Enriching Fashion: An eye for detail: Stitching Time. *Open Eyes, Friends of Te Papa Newsletter* 10: 1

Townsend, L. (2010). Tales from the Toy box. Collecting the history of New Zealand childhood. *Te Manawa Museum Society Inc. Newsletter* 6: 3

Townsend, L. (2011). A breath of fresh air. *The Dominion Post* 3 January 2011

Māori

* Baker, M. (2010), *A Baby's Wrap Rediscovered*. Te Rōpu Rāranga Whatu o Aotearoa quarterly, Issue 48, Dec 2010.

* Osborne, N. Review of *Tai Tokerau Whakairo Rākau – Northland Maori Wood Carving*. Journal of the Polynesian Society, Vol 119, No. 3, Sep 2010, pp 317-319.

* Tamarapa, A. (2010). Roka Ngarimu-Cameron: Nga Kakahu - change and exchange, Pp. 9-10 in: *Roka Ngarimu-Cameron and Jo Torr. Nga Kakahu: Change and Exchange*. Pataka Porirua Museum of Arts and Cultures. 11 pp.

Art

McCredie, A. (2010). Brake: a life in focus. *New Zealand geographic* 105: 80-93

McCredie, A. (2010). Bringing life into focus. *The Walkley Magazine* 64: 35

McCredie, A. (2011). Brian Brake: A vintage year. *New Zealand Memories* 89: 42-47

Collections Information and Museology

*Tracy Puklowski, *Gateways, not Gatekeepers: Exploring the Waharoa as a Model for Working in Partnership* - book chapter in *The Radical Museum: democracy, dialogue and debate* (to be published January 2011)

Torr, J. (2010). How differing notions of ownership have an impact on loans. *Australasian Registrars Committee Journal* 60: 27-29

Research Papers (Externally peer reviewed)

Natural Environment:

Beu, A.G. and B.A. Marshall (2011). New Cenozoic records of genera and families from New Zealand (Mollusca, Gastropoda): highlights from Phillip Maxwell's collection. *New Zealand Journal of Geology and Geophysics* 54: 13-34.

Beu, A.G. and B.A. Marshall (2011). Special issue: Paleontology and Malacology papers in memory of Phillip Maxwell – foreword. *New Zealand Journal of Geology and Geophysics* 54: 1.

Beu, A.G., Fordyce, R.E. and B.A. Marshall (2011). Phillip Alan Maxwell MSc, PhD, 5 May 1940–5 February 2007. Obituary, taxa and bibliography. *New Zealand Journal of Geology and Geophysics* 54: 3-11.

Beu, A.G., and B.A. Marshall (2011). Retraction: *Austrofusus glans* (Röding, 1798) is the type species of *Austrofusus* Kobelt, 1879 (Gastropoda: Buccinulidae). *Molluscan Research* 31(1): 61-62

Bouma, W.L.M., Ritchie, P. and L.R. Perrie (2010). Phylogeny and generic taxonomy of the New Zealand Pteridaceae ferns from chloroplast rbcL DNA sequences. *Australian Systematic Botany* 23: 143-151

Clark, M.R., Dunn, M.R., McMillan, P.J., Pinkerton, M.H., Stewart, A.L. and S.M. Hanchet (2011). Latitudinal variation of demersal fish assemblages in the western Ross Sea. *Antarctic Science* 22 (6): 782-792

Cosel, R. von and Marshall, B.A. (2010). A new genus and species of large mussel (Mollusca: Bivalvia: Mytilidae) from the Kermadec Ridge. *Tuhinga – Records of the Museum of New Zealand Te Papa Tongarewa* 21: 59-73

Delgado, J.A. and R.L. Palma (2010). Nothing in the history of Spanish anís makes sense, except in the light of evolution. *Science & Education* 20(2): 141-157.

Delgado, J.A. and Palma, R.L. (2010). A revision of the genus *Podaena* Ordish (Insecta Coleoptera: Hydraenidae). *Zootaxa* 2678: 1-7.

Fife, A.J., Glenny, D., Beever, J.E., Braggins, J.E., Brownsey, P.J., Renner, M. and R. Hitchmough (2010). New Zealand's threatened bryophytes: conservation efforts. *Phytotaxa* 9: 275-278.

- Freeman, D.J., Marshall, B.A., Ahyong, S.T., Wong, S.R. and R.A. Hitchmough (2010). Conservation status of New Zealand marine invertebrates, 2009. *New Zealand Journal of Marine and Freshwater Research* 44: 129-148.
- Glenny, D., Fife, A.J., Brownsey, P.J., Renner, M.A.M., Braggins, J.E., Beever, J.E., Hitchmough, R. (2011). Threatened and uncommon bryophytes of New Zealand (2010 revision). *New Zealand Journal of Botany* 49: 305-327
- Gomon, M.F. and C.D. Roberts (2011). A second New Zealand species of the stargazer genus *Kathetostoma* (Trachinoidei: Uranoscopidae). *Zootaxa* 2776: 1-12.
- Horning, D.S., Palma, R.L. and W.R. Miller (2010). *Phylum Tardigrada – water bears*. Pp. 27-35 in D. Gordon (Ed.). *New Zealand Inventory of Biodiversity. Kingdom Animalia - Chaetognatha, Ecdysozoa, Ichnofossils*. Christchurch, Canterbury University Press. Volume Two, 528 pp.
- Marshall, B.A. and R. Houart (2011). The genus *Pagodula* (Mollusca: Gastropoda: Muricidae) in Australia, the New Zealand region, and the Tasman Sea. *New Zealand Journal of Geology and Geophysics* 54: 89-114.
- Marshall, B.A. (2011). A new species of *Latia* Gray, 1850 (Gastropoda: Pulmonata: Hygrophila: Chilinoidea: Latiidae) from Miocene Palaeo-lake Manuherikia, southern New Zealand, and biogeographic implications. *Molluscan Research* 31: 47-52.
- Meudt, H.M. (2011). Amplified fragment length polymorphism data reveal a history of auto- and allopolyploidy in New Zealand endemic species of *Plantago* (Plantaginaceae) new perspectives on a taxonomically challenging group. *International Journal of Plant Sciences* 172(2): 220-237.
- Miskelly, C.M., and A.J. Baker (2010). Corrected publication date for *Coenocorypha aucklandica perserverance*. *Notornis* 57(1): 56
- Murray, B., Meudt, H., Lin Tay, M. and P. Garnock-Jones (2010). New chromosome numbers in New Zealand species of *Plantago* (Plantaginaceae). *New Zealand Journal of Botany* 48(3-4): 197 – 204.
- Palma, R.L. (2010). *Order Phthiraptera: Lice*. Pp. 294–296, 407–409 in D. Gordon (Ed.). *New Zealand Inventory of Biodiversity. Kingdom Animalia - Chaetognatha, Ecdysozoa, Ichnofossils*. Christchurch, Canterbury University Press. Volume Two, 528 pp.
- Palma, R.L. (2010). *Phthiraptera* In: Borges, P.A.V., Costa, A., Cunha, R., Gabriel, R., Goncalves, V., Martins, A.F., Melo, I., Parente, M., Raposeiro, P., Rodrigues, P., Santos, R.S., Silva, L., Vieira, P. and V. VIEIRA. (Eds). A list of the terrestrial and marine biota from the Azores. *Cascais: Principia* 432: 194–195, 214–215..
- Palma, R.L. (2011). Obituary – Robert Louis Cecil Pilgrim. 26 August 1921 – 7 May 2010. *New Zealand Entomologist* 34: 83-86.
- Palma, R.L. and R.D. Price (2010). The species of *Myrsidea* Waterston (Insecta: Phthiraptera: Menoponidae) from the Galápagos Islands, with descriptions of new taxa. *Tuhinga – Records of the Museum of New Zealand Te Papa Tongarewa* 21: 135–146.
- * Paulin, C.D. (2010). Māori fishhooks in European Museums. *Tuhinga – Records of the Museum of New Zealand Te Papa Tongarewa* 21: 13-41.
- Perrie, L.R., Ohlsen, D.J., Shepherd, L.D., Garrett, M., Brownsey, P.J. and M.J. Bayly (2010). Tasmanian and Victorian populations of the fern *Asplenium hookerianum* result from independent dispersals from New Zealand. *Australian Systematic Botany* 23: 387-392.
- Perrie, L.R., Shepherd, L.D., de Lange, P.J. and P.J. Brownsey (2010). Parallel polyploid speciation: distinct sympatric gene-pools of recurrently derived allo-octoploid *Asplenium* ferns. *Molecular Ecology* 19: 2916-2932.
- Prebble, J.M., Cupido, C.N., Meudt, H.M. and P.J. Garnock-Jones (2011). First phylogeny and biogeography of the southern bluebells (*Wahlenbergia*, Campanulaceae). *Molecular Phylogenetics and Evolution* 59: 636-648
- Saether, K.P., Little, C.T.S., Campbell, K.A., Marshall, B.A., Collins, M. and A.C. Alfaro (2010). New fossil mussels (Mollusca: Mytilidae) from Miocene hydrocarbon seep deposits, North Island, New Zealand, with general remarks on vent and seep mussels. *Zootaxa* 2577: 1–45.
- Scofield, R.P., Christie, D., Palma, R.L. and A.J.D. Tennyson (2011). First record of streaked shearwater (*Calonectris leucomelas*) in New Zealand. *Notornis* 57(4): 212-215
- Shepherd, L.D. and L.R. Perrie (2011). Microsatellite DNA analyses of a highly disjunct New Zealand tree reveal strong differentiation and imply a formerly more continuous distribution. *Molecular Ecology* 20: 1389-1400.
- Sirvid, P.J., Zhang, Z.Q., Harvey M.S., Rhode, B.E., Cook, D.R., Bartsch, I. and D.A. Staples (2011). *Chelicerata: Horseshoe crabs, Arachnids, Sea Spiders*. Pp. 50-89 in D. Gordon, D. (Ed.). *New Zealand Inventory of Biodiversity. Kingdom Animalia - Chaetognatha,*

Ecdysozoa, Ichnofossils. Christchurch, Canterbury University Press. Volume Two, 528 pp.

Smith, P.J., Steinke, D., McMillan, P., Stewart, A.L. and R.D. Ward (2010). DNA barcoding of morid cods reveals deep divergence in the antitropical *Halargyreus johnsoni* but little distinction between *Antimora rostrata* and *Antimora microlepis*. *Mitochondrial DNA* 21 (S2): 6-11.

Smith, P.J., Steinke, D., McMillan, P.J., Stewart, A.L., McVeagh, S.M., De Astatloa, J.M., Welsford, D. and R.D. Ward (2010). DNA barcoding highlights a cryptic species of grenadier *Macrourus* in the Southern Ocean. *Journal of Fish Biology* 77(11): 355-365.

Stewart, A.L. and T.W. Pietsch (2010). A new species of deep-sea anglerfish, genus *Himantolophus* (Lophiiformes: Himantolophidae), from the Western South Pacific, with comments on the validity of *H. pseudalbinares*. *Zootaxa* 2671: 53 – 60.

Stöger, I., Marshall, B.A., Schwabe, E., Kneibelsberger, T. and M. Schrödl (2010). *Serialia* or not *Serialia*? Adding three monoplacophoran species to a multigene approach on basal molluscan phylogeny. *Tropical Natural History Supplement* 3: 83.

Stölting, K.N., Meudt, H.M., Clarke, A.C., Blankenhorn, W.U. and A.B. Wilson (2011). Cost-Effective Fluorescent Amplified Fragment Length Polymorphism (AFLP) Analyses Using a Three Primer System. *Molecular Ecology Resources* 11(3): 494-502

Sychra, O., Palma, R.L., Saxena, A.K., Ahmad, A., Bansal, N. and C. ADAM (2011). Chewing lice of the genus *Phlopterus* (Phthiraptera: Phlopterae) from drongos (Passeriformes: Dicruridae). *Zootaxa* 2868: 51–61

Tay, M.L., Meudt, H., Garnock-Jones, P. and P. Ritchie (2010). Testing species limits of New Zealand *Plantago* (Plantaginaceae) using internal transcribed spacer (ITS) DNA sequences. 48(3-4): 205-224.

Tennyson, A.J.D., Palma, R.L., Scofield, R.P. and T.H. Worthy (2010). Emending the species name for Lopdell's penguin. *Notornis* 57: 54-55.

Townsend, M., Marshall, B.A. and Greenfield, B.L. (2010). First records of the Australian dog whelk, *Nassarius (Plicularia) burchardi* (Dunker in Philippi, 1849) (Mollusca: Gastropoda) from New Zealand. *New Zealand Journal of Marine and Freshwater Research* 44(4): 343-348.

Vink, C.J., Derraik, J.G.B., Phillips, C.B. and P.J. Sirvid (2010). The invasive Australian redback spider, *Latrodectus hasseltii* Thorell

1870 (Araneae: Theridiidae): current and potential distributions, and likely impacts. *Biological Invasions* DOI 10.1007/s10530-010-9885-6.

Vink, C.J., Fitzgerald, B.M., Sirvid, P.J. and N. Duperre (2011). Reuniting males and females: redescrptions of *Nuisiana arboris* (Marples 1959) and *Cambridgea reinga* Forster & Wilton 1973 (Araneae: Desidae, Stiphidiidae). *Zootaxa* 2739: 41-50

Webber, W.R., et al. (+ 21 other authors) (2011). *Phylum Arthropoda, Subphylum Crustacea* Pp. 98-232 in D. Gordon (Ed.). *New Zealand Inventory of Biodiversity. Kingdom Animalia - Chaetognatha, Ecdysozoa, Ichnofossils*. Christchurch, Canterbury University Press. Volume Two, 528 pp.

Worthy, T.H., Tennyson, A.J.D. and R.P. Scofield (2011). Fossils reveal an early Miocene presence of the aberrant gruiform (Aves: Aptornithidae) in New Zealand. *Journal for Ornithology* 152: 669-680.

Worthy, T.H., Tennyson, A.J.D., Hand, S.J., Godthelp, H. and R.P. Scofield (2011). Terrestrial turtle fossils from New Zealand refloat moa's ark. *Copeia* 2011(1): 72-76

Zintzen, V., Anderson, M.J., Roberts, C.D. and C.E. Diebel (2011). Increasing variation in taxonomic distinctness reveals clusters of specialists in the deep sea. *Ecography* 34: 306-317.

Zintzen, V., Roberts, C.D., Clark, M.R., Williams, A., Althaus, F. and P.R. Last (2011). Composition, distribution and regional affinities of the deepwater ichthyofauna of the Lord Howe Rise and Norfolk Ridge, south-west Pacific Ocean. *Deep-Sea Research II* 58: 933-947

History

Gibson, S. and S. Mallon (2010). Representing community exhibitions at the Museum of New Zealand Te Papa Tongarewa. *Tuhinga - Records of the Museum of New Zealand Te Papa Tongarewa* 21: 43-58.

Ross, K. (2010). Review of Kate Hunter, *Hunting: A New Zealand History*. *New Zealand Journal of History* 44 (2): 190

Māori

* Osborne, N.J. (2010). Tai Tokerau Whakairo Rakau: Northland Maori Wood carving [Book Review]. *Journal of the Polynesian Society* 119 (3): 317-319.

Art

Mitchell, L. (2010). Formative Experiences 1945-1954, pp. 21-31 In: McCredie, A. (Ed), *Brian Brake: Lens on the World*, Te Papa Press, 352 pp.

McAloon, W. (2010). Book review, Mrkusich: The Art of Transformation by Alan Wright and Edward Hanfling. *Australian and New Zealand Journal of Art* 10 (1): 222-26.

Pacific

Akeli, S. (2010). Letter Man: representing graphic designer Joseph Churchward *Tuhinga Records of the Museum of New Zealand Te Papa Tongarewa* 21: 1-11.

Akeli, S. (2010). Review of 'The Warm Winds of Change: Globalisation in Contemporary Sāmoa' by Cluny and La'avasa Macpherson (2009). *Journal of the Polynesian Society* 119(3): 320-322.

⁵ Gibson, S. and S. Mallon (2010). Representing community exhibitions at the Museum of New Zealand Te Papa Tongarewa. *Tuhinga Records of the Museum of New Zealand Te Papa Tongarewa* 21: 43-58.

Hutton, G., Akeli, S. and S. Mallon (2010). Rediscovering the collection: Cook Islands material culture in the Museum of New Zealand. *Tuhinga Records of the Museum of New Zealand Te Papa Tongarewa* 21: 99-123.

Mallon, S. (2010). Against Tradition. *The Contemporary Pacific: a Journal of Island Affairs* 22(2): 362-381.

Mallon, S. (2010). Fatu Feu'u, Mark Adams, John Pule, Michel Tuffery, pp 208, 209, 224, 225, In: *New Zealand Art: From Cook to Contemporary*, Te Papa Press, 170 pp.

Mallon, S. (2011). Afterword - Pacific voices in the bicultural Museum. Pp. 248-253 in Conal McCarthy (ed), *Museums and Māori : heritage professionals, indigenous collections, current practice*. Wellington, Te Papa Press. 288 pp.

Mallon, S. (2011). Society, change and the global village- a review of Cluny Macpherson and La'avasa Macpherson (2009) *The Warm Winds of Change: Globalisation in Contemporary Samoa*. *Asia Pacific Viewpoint* 52(1): 119-120.

Electronic Publications

Brownsey, P. and L. Perrie (2010). Ferns. NZ Botanists past and present. <http://www.sciencelearn.org.nz/Contexts/Ferns/NZ-Research/Ferns>

Meudt, H. (2011). New Zealand Plant Radiation Network (NZPRN) <http://nzprn.otago.ac.nz/wiki/bin/view/NZPRN/WebHome>

Spencer, H.G., Willan, R.C., Marshall, B. and T.J. Murray (2011). Checklist of the Recent Mollusca Recorded from the New Zealand Exclusive Economic Zone <http://www.molluscs.otago.ac.nz/index.html>

Regnault, C. (2010). Small Screen Style. NZ On Screen website. Fashion on Screen collection, <http://www.nzonscreen.com/collection/nz-fashion-on-screen/background>

Gibson, S. (2010). Sir Peter Blake, Dictionary of New Zealand Biography. <http://www.teara.govt.nz/en/biographies/6b1/1>

Books

McCredie, A. (Ed), (2010). *Brian Brake: Lens on the World*, Te Papa Press, 352 pp.

Anonymous (2010). *New Zealand Art: From Cook to Contemporary*, Te Papa Press, 170 pp. [The essays in *New Zealand art: From Cook to contemporary* were originally published in *Art at Te Papa* (Te Papa Press, 2009).

Lloyd-Jenkins, D., Regnault, C. and L. Hammonds. (Eds). (2010). *The Dress Circle: New Zealand Fashion Design Since 1940*, Random House, Godwit Press, 400 pp.

* Smith, H. (2011). *E Tū Ake - Maori Standing Strong*, Te Papa Press, 208 pp.

Conference Presentations

Natural Environment

Alan Tennyson (with Taylor, G., Ismar, S., Gaskin, C. and K. Baird) (2010). Seabirds of the Kermadec Islands. The Kermadecs, PEW Symposium, 30-31 August 2010, Te Papa, Wellington

Alan Tennyson. Putting Vanuatu petrels on the map. Ornithological Society of New Zealand AGM, 5 June 2011, Wellington.

Andrew Stewart, Deepwater demersal fish communities of the Kermadec region. The Kermadecs, PEW Symposium, 30-31 August 2010, Wellington.

⁵ This publication is also listed under senior author (History)

Carlos Lehnebach, Re-delimiting species in *Uncinia*: a morphometric study of *Uncinia angustifolia*, *U. rupestris* and *U. zotovii*. Australian Systematic Botany Society Conference. 30 November- 3 December 2010. Lincoln University. Canterbury.

Chris Paulin, Matau: traditional hooks, innovative designs. Contained Memories Conference, 9-11 December 2010, Te Papa, Wellington.

Chris Paulin, Myxed mullet: the rise and fall of a commercial fishery. New Zealand Marine Sciences Society: Past, Present, future, 7-9 July 2010, Wellington.

Colin Miskelly. Tutukiwi & hakawai - New Zealand's bird of myth and mystery. International Year for Biodiversity symposium, 15 October 2010, UNITEC, Auckland.

Colin Miskelly Should I stay or should I go? Attempts to anchor pelagic fairy prisms to their release site on Mana Island. Ecological Society of New Zealand annual conference, 22-25 November 2010, Dunedin.

Colin Miskelly. In the dragons' keep - herpetological holdings at Museum of New Zealand Te Papa Tongarewa. Society for Research on Amphibians and Reptiles in New Zealand biannual conference, 11-13 February 2011, Dunedin.

Colin Miskelly. Successful translocation of Snares Island snipe *Coenocorypha huegeli* to replace the extinct South Island snipe *C. iredalei*. Ornithological Society of New Zealand annual conference, 4-5 June 2011, Lower Hutt.

David Glenny and Patrick Brownsey, New Zealand ferns and liverworts: do they share a common biogeographic history? Australian Systematic Botany Society Conference, 30 November - 3 December 2010, Lincoln University, Canterbury.

Heidi Meudt, Systematics of native New Zealand *Plantago*. Australian Systematic Botany Society (ASBS) conference, 30 November - 3 December 2010, Lincoln University, Canterbury

Leon Perrie, The Disjunct Distribution of Fierce Lancewood, *Pseudopanax ferox*. Australian Systematic Botany Society Conference, 30 November - 3 December 2010, Lincoln University, Canterbury

History

Claire Regnault, The problem of being part of the furniture, New Zealand Furniture History Symposium, 9-10 December 2010, Southland Museum and Art Gallery, Invercargill.

Claire Regnault, Convenor of the Decorative Arts Session, Museums Aotearoa conference 13-15 April, Nelson.

Kirstie Ross, "I am shour we learnt a lot about trees": The Forestry in Schools Movement'. New Zealand Geographical Society Biennial Conference, 5 July 2010, Christchurch.

Kirstie Ross, With Her Bit of Khaki: The WWI Textiles of Dorothy Broad and Wyville Rutherford', Hanging by a Thread, 9th Annual Symposium of the Costume & Textile Association of New Zealand, 12 June 2010, The New Dowse Art Museum, Lower Hutt.

Kirstie Ross, Khaki and Consolation: The WWI textiles of Dorothy Broad and Wyville Rutherford, Missing: Emotion and the Great War Symposium, 23-24 November 2010, Te Papa, Wellington.

Lynette Townsend, The Rangitane Doll - Surviving to tell of War, childhood and the Museum, Hanging by a Thread 9th Annual Symposium of the Costume & Textile Association of New Zealand, 12 June 2010, The New Dowse Art Museum, Lower Hutt.

Lynette Townsend, Seen but not heard: collecting the history of childhood. Museums Aotearoa, 15 May 2011, Nelson

Lynette Townsend. To what extent have museum collections captured the history of childhood and the child's perspective in history? Conference paper and presentation at the Society for the History of Childhood and Youth biennial conference: The State of Children: Politics and Policies of Childhood in Global Perspective. Columbia University, New York, 2011.

Michael Fitzgerald, Te Papa's Colonial Furniture Collection, New Zealand Furniture History Symposium, 9 December 2010, Southland Museum and Art Gallery, Invercargill.

Stephanie Gibson, Some Striking Pictures: First World War posters at Te Papa, Missing: Emotion and the Great War Symposium, 23-24 November 2010, Te Papa, Wellington.

Māori

Hokimate Harwood. Nga tohu o nga kairaranga: The signs of the weavers. Contained Memory conference, 9-11 December 2010, Te Papa, Wellington

Matiu Baker, Ngā Taonga Whakapūmau i te Tiriti - Sealed with a Gift: Gifts of Contract and the Treaty of Waitangi. Conciliation Narratives in Settler Societies conference, 18-19 November 2010, Australian National University, Sydney.

Awhina Tamarapa, Kahu Ora: A celebration of Māori cloaks and weavers. Costume and Textile Association of New Zealand 10th Annual Symposium, 17-18 June 2011, Tauranga City Art Gallery.

Art

Justine Olsen, Attingham and private collections in New Zealand museums. Museums Aotearoa conference 13-15 April, Nelson

Vicki Robson, An Unerring eye for a good painting': Ernest Heber Thompson's acquisitions of British art for the National Art Gallery 1952-1966, AAANZ conference: 'Tradition and transformation', 1-3 December 2010, University of Adelaide.

William McAloon, Where is New Zealand Art History Now? 10 July 2010, Adam Art Gallery, Victoria University of Wellington

Pacific

Grace Hutton. Tivaevae and Monomono at Te Papa, Maori & Pacific Textile Symposium 10 June 2011, Te Papa, Wellington.

Grace Hutton. Rediscovering the Cook Island Collection, Pacific Arts Association, 9 August 2010, Rarotonga.

Safua Akeli. Samoa 'ie toga: legacies of connections, Maori and Pacific Textiles Symposium 10-11 June 2011, Te Papa, Wellington

Safua Akeli. Leprosy control in Samoa 1890 to 1914. Measina a Samoa conference, 30 August – 1 September 2010, National University of Samoa, Samoa.

Sean Mallon. Discussant Curatopia: museums and the future of curatorial practice, 26 February 2011, Rutherford House, Victoria University of Wellington.

Collections Information & Access

Adrian Kingston. Te Papa, Collections Online and Thesauri. *International Multilingual Terminology Working Group meeting*, Getty Research Institute, Los Angeles, August 23-26 2010

Adrian Kingston. Using standards and efficient content creation to provide access to Te Papa's collections and knowledge, *Museum Computer Network (Taiwan Chapter) annual meeting* 16 March, and *Taiwan e-Learning and Digital Archives Programme (TELDAP) conference*, 17-19 March 2011, Taipei.

Adrian Kingston. Collections Online: Standards and Framework for Access. Symposium - *Journeys Towards a New Paradigm Exploring Collaboration and Access to Digital Artefacts in the GLAM Sector*, 18 May 2011, Victoria University, Wellington.

Rangi Te Kanawa, Conservation of Maori and Pacific Textiles. Maori and Pacific Textiles Symposium 10 - 11 June 2011, Te Papa, Wellington

Tracy Puklowski, National Services Te Paerangi and bicultural service delivery. National Museums Conference, 20-22 October, Taipei, Taiwan.

Simon Whittaker, Designing Facilities for Fluid-preserved Collections, Society for the Preservation of Natural History Collections (SPNHC), 31 May - 5 June 2010, Ottawa, Canada.

Ō mātou hoa - Our partners

Te Papa thanks the people of New Zealand and many organisations, iwi and individuals for their generous support.

Founding Partner



Founding Corporate Partner



Founding Communications Partner



Founding Corporate Associate



Gallery Sponsor



Founding Corporate Sponsor



Cultural Partners



Corporate member

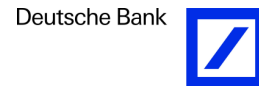


2010/11 exhibition and event partners

European Masters



SIEMENS



Brian Brake: Lens on the World



E Tū Ake: Standing Strong



Matariki Festival and Gala 2011



Supported by
the New Zealand
government through

