

Exquisite corpse



The what

Create a fantastical creature with your classmates. The results will be strange, funny, and unpredictable. Your teacher might time you for each step, so listen out for instructions.

You'll need:

- the exquisite corpse templates at the back or a sheet of paper folded into three
- coloured pencils or pens.

The how

Step 1: Draw a head

Use the exquisite corpse template or a piece of paper folded into three. Draw the head of a strange, imaginary creature in the first third. Once you've finished, fold over your creation so the next person can only see the two lines where the neck begins.

Step 2: Swap your paper

Give your paper to someone and take their paper.

Step 3: Draw a body

Draw a fantastical body that joins up with the neck lines. This body could have wings, or gills, or lots of arms – whatever! Add some guiding lines so the next person can see where to start drawing the next part of the body. Now fold over the paper so the body is hidden.

Step 4: Swap your paper

Give your paper to someone new and take theirs.

Step 5: Draw the last part of the creature

This last section is for the legs, or tail, or feathers – or all of them!

Step 6: Reveal the creature

Open up the wonderfully bizarre creatures you've made.

Want to keep working on the creature? Cut it out and display it on the wall. Give it a name and explain where it lives and what it eats. You could even write a story about it.

head

body



Bird, mounted penguin, circa 1908, New Zealand, maker unknown. Te Papa (B.043118)

head

body



Tiger, *Panthera tigris*, collected no data. CC BY 4.0. Te Papa (cropped)

legs

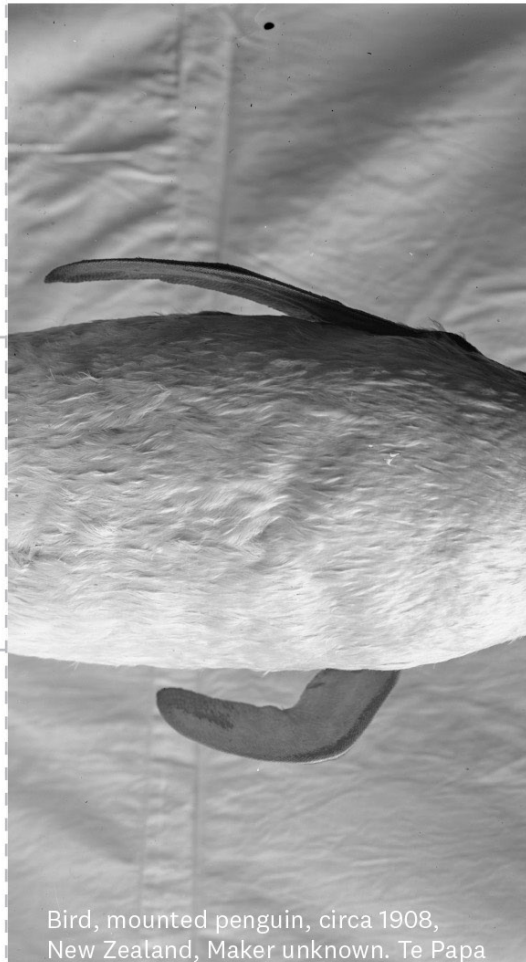
body



Bird, mounted penguin, circa 1908,
New Zealand, Maker unknown. Te Papa

legs

head



Bird, mounted penguin, circa 1908,
New Zealand, Maker unknown. Te Papa

head



Portrait of Mr Crawford, circa 1930, Taranaki,
by William Oakley, F B Butler/Crown Studios Collection.
Gift of Frederick B Butler, 1971. Te Papa

legs

head



Woman in hat. From the album: Snapshot album - Nga Mahanga,
circa 1900, Manawatu, maker unknown. Te Papa.

body

legs