

**MUSEUM OF NEW
ZEALAND
TE PAPA
TONGAREWA**

Cable St
PO Box 467
Wellington
New Zealand

Telephone
64-4-381 7249
www.tepapa.govt.nz



8 August 2023

Tēnā koe,

Re: Official Information Act (OIA) Request – taonga tūturu from Ngāti Pikiao

I am writing in response to your OIA request transferred from Manatū Taonga | Ministry of Culture and Heritage on 10 July, in which the following information was requested:

...the location and number of Taonga Tūturu specifically relating to Ngāti Pikiao that are held beyond the national collection inventory as you have listed in your email... - A high level breakdown of the total number of registered taonga held in different collections or locations (i.e. museum collections, or regions)

We have searched Te Papa's records and have identified 43 taonga in total provenanced to Ngāti Pikiao. These include 21 original component parts of Te Tākinga pātaka and four contemporary taonga. Details of these taonga are provided in the attached file.

If you are not satisfied with this response you have the right to seek an investigation and review by the Ombudsman.

Information about how to make a complaint is available at www.ombudsman.parliament.nz or freephone 0800 802 602.

If you wish to discuss any aspect of your request please contact me at OIA@tepapa.govt.nz.

Yours sincerely

A handwritten signature in black ink, appearing to be 'FL' or similar initials.

Frances Lawrence
Principal Advisor Strategy, Planning and Performance

Ngāti Pikiao Taonga at Te Papa

03 August 2023

Museum of New Zealand Te Papa Tongarewa ME000503

Taurira (Maori woven textile sampler)
Te Hikapuhi Wiremu Poihipi (- 6 Jan 1934)
Te Arawa
Ngāti Pikiao
Te Hikapuhi Wiremu Poihipi
Augustus Hamilton
circa 1904 Rotorua, Whakarewarewa
Whakarewarewa
Overall 400 3350 27

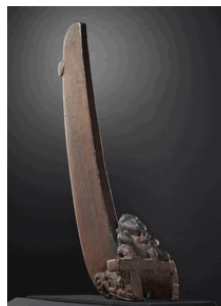
W-3624-JB01



Museum of New Zealand Te Papa Tongarewa ME001829

Taurapa (canoe stern post)
Unknown (-)
Ngāti Pikiao [attributed]
1500-1800 Okere (from a cave), Lake Rotoiti, Rotorua, Lake
Hand carved from a single piece of wood, probably totara.
Overall 650 221 140

W-3621-26DG



Museum of New Zealand Te Papa Tongarewa ME001475

Taurapa (stern post)
Unknown (-)
Ngāti Pikiao [attributed]
Ex TE Donne Collection
19th century Rotoiti
Rotorua

Museum of New Zealand Te Papa Tongarewa ME001880

Amo (bargeboard support post)
Mita Te Rangituakoha (-)
Ngāti Pikiao
Purchased from "Robieson, P" - date to be confirmed.
Originally part of the whareniui "Te Awhe o te Rangi"
House owned and built by Mita te Rangituakoha (Ngāti
1872 - 1904 Te Awhe House, Maketu bay, Bay of Plenty
Maketu
Carved wood
Overall 2060 390

W-3621-Q100



Museum of New Zealand Te Papa Tongarewa ME002006/1-13

Pataka (store house) named 'Te Awahi'
Unknown (-)
Ngāti Pikiao
1839-1900 Maketu, Pukehina
Maketu
Carved totara wood, paua shell, paint.

Museum of New Zealand Te Papa Tongarewa ME002036

Amo (bargeboard support post)
Unknown (-)
Ngāti Pikiao [attributed]
Sir Walter Buller Collection
Wellington

W-3621-Q000

**Museum of New Zealand Te Papa Tongarewa
ME002030**

Pataka carving
Unknown (-)
Ngāti Pikiao [attributed]
Sir Walter Buller Collection
1845-1855 Te Hape, Te Tāheke, Lake Rotoiti
Rotoiti, Lake

**Museum of New Zealand Te Papa Tongarewa
ME005222**

Kumete (carved lidded presentation bowl)
Patoromu Tamatea (-)
Ngāti Tamateatūtahi
Ngāti Pikiao [attributed]
Attributed to Patoromu Tamatea, master carver of Ngati
Tamateatutahi hapu of Ngati Pikiao.
Owned by Tamihana Te Rauparaha, only surviving son of
1850-1890 Lake Rotoiti (Pukeko), Rotorua
Rotoiti, Lake
Overall 450 350 330

W-3621-27BF



**Museum of New Zealand Te Papa Tongarewa
ME008585**

Pou Aronui (pataka support pile), Te Awhi (Pukehina)
pataka, Maketu, Te Arawa.
Unknown (-)
Ngāti Pikiao

	Maketu		
Maketu			
Overall	990	300	200

W-3621-Q000



**Museum of New Zealand Te Papa Tongarewa
ME012209**

Amo (bargeboard support post), Tokopikowhakahau.
Wero Taroi (- circa 1880)
Anaha K. Te Rahui (1822 - 30 September 1913)
Ngāti Raukawa
Ngāti Pikiao
Tokopikowhakahau commissioned by Karanama Te
Akatuku, Ngati Tukorehe (Ngati Raukawa), circa 1877.
1877-1878 Tapapa, Okoroire
Waikato
Overall 4300 490

W-3621-Q100

**Museum of New Zealand Te Papa Tongarewa
ME014355**

Paepae (outer threshold)
Tuterangiwhakaea II (-)
Ngāti Pikiao [attributed]
Te Arawa [attributed]
Private transaction.
Northern shore of Lake Rotoiti, Rotorua
Rotoiti, Lake
Overall 1252 428 52

W-3621-Q000



**Museum of New Zealand Te Papa Tongarewa
ME012234/2**

Whakawae (door jamb) Tokopikowhakahau
Wero Taroi (- circa 1880)
Anaha K. Te Rahui (1822 - 30 September 1913)
Ngāti Raukawa
Ngāti Pikiao
Tokopikowhakahau commissioned by Karanama Te
Akatuku, Ngati Tukorehe (Ngati Raukawa), circa 1877.
Alexander Turnbull
1877-1878 Tapapa, Okoroire
Waikato
Overall 1850 215 190

W-3621-11AF

Museum of New Zealand Te Papa Tongarewa

ME014354

Panel

Tuterangiwhakaea II (-)

Ngāti Pikiao [attributed]

Te Arawa [attributed]

Ex Levin Collection.

Northern shore of Lake Rotoiti, Rotorua

Rotoiti, Lake

W-3621-Q000



Museum of New Zealand Te Papa Tongarewa

ME014356

Poupou (side wall post)

Tuterangiwhakaea II (-)

Ngāti Pikiao [attributed]

Te Arawa [attributed]

Northern shore of Lake Rotoiti, Rotorua

Rotoiti, Lake

Overall 1257 455 30

Museum of New Zealand Te Papa Tongarewa

ME015715

Te Tākinga pātaka

Te Hārete Te Whanarere (-)

Thomas H. Heberley (1876 - 15 Jan 1937)

Ngāti Pikiao

Ngāti Mākino

Te Hārete Te Whanarere

Te Pōkiha Taranui

Gilbert Mair

Te Hape, Te Tāheke, Lake Rotoiti

1934
Rotoiti, Lake

Overall 5500 6500 6040

W-4211-0000



Museum of New Zealand Te Papa Tongarewa

ME015717

Heko pātaka (rafter for storehouse)

Te Hārete Te Whanarere (-)

Ngāti Pikiao

Te Arawa

Walter Buller, Te Pōkiha Taranui of Ngāti Pikiao.

Collected in 1886 (January) by Gilbert Mair, for Walter

Buller. Exhibited by Buller at the Colonial and Indian

Rotorua (Taheke)

North Island

Overall 2250 365 40

W-4211-0000



Museum of New Zealand Te Papa Tongarewa

ME015718

Heke pataka (rafter for storehouse)

(-)

Ngāti Pikiao

Te Arawa

Ngati Pikiao; Acquired from Te Pokiha by Gilbert Mair and Walter Buller in January 1886/ Presented to the Dominion Museum by Walter Buller's family in 1906.

Rotorua

Rotorua

Overall 1770 310 260

W-4211-0000



Museum of New Zealand Te Papa Tongarewa

ME015719

Pane (porch ridgepole carving)

Unknown (-)

Ngāti Pikiao

Te Arawa

Obtained from Harete and Raiwhara by Gilbert Mair probably on behalf of Walter Buller in 1886. Gifted to Dominion Museum on the death of Mr Buller in 1906 by

Rotorua

Rotorua

Overall 1770 310 260

W-4211-0000



Museum of New Zealand Te Papa Tongarewa

ME015721

Heke pataka (rafter for storehouse)

Unknown (-)

Ngāti Pikiao

Te Arawa

Ngati Pikiao; Acquired from Te Pokiha by Gilbert Mair and Walter Buller in January 1886/ Presented to the Dominion Museum by Walter Bullers family in 1906.

Rotorua

Rotorua

Overall 2300

W-4211-0000



**Museum of New Zealand Te Papa Tongarewa
ME015720**

Heke pataka (rafter for storehouse)

Unknown (-)

Ngāti Pikiao

Te Arawa

Ngati Pikiao; Acquired from Te Pokiha by Gilbert Mair and Walter Buller in January 1886/ Presented to the Dominion Museum by Walter Bullers family in 1906.

	Rotorua	
Rotorua		
Overall	360	25

W-4211-0000



**Museum of New Zealand Te Papa Tongarewa
ME015722**

Epa pataka (end wall post for storehouse)

Unknown (-)

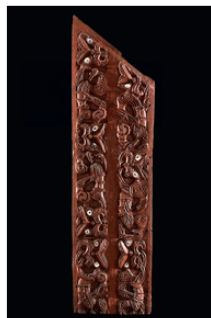
Ngāti Pikiao

Te Arawa

Ngati Pikiao; Acquired from Te Pokiha by Gilbert Mair and Walter Buller in January 1886/ Presented to the Dominion Museum by Walter Bullers family in 1906.

	Rotorua		
Rotorua			
Overall	1340	365	50

W-4211-0000



**Museum of New Zealand Te Papa Tongarewa
ME015723**

Epa pataka (end wall post for storehouse)

Unknown (-)

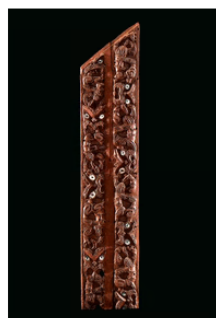
Ngāti Pikiao

Te Arawa

Ngati Pikiao; Acquired from Te Pokiha by Gilbert Mair and Walter Buller in January 1886/ Presented to the Dominion Museum by Walter Bullers family in 1906.

	Rotorua		
Rotorua			
Overall	2150	490	55

W-4211-0000



**Museum of New Zealand Te Papa Tongarewa
ME015725**

Epa pataka (end wall post for storehouse)

Unknown (-)

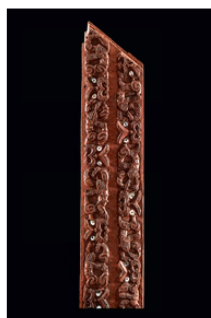
Ngāti Pikiao

Te Arawa

Ngati Pikiao; Acquired from by Gilbert Mair and Walter Buller in January 1886. Presented to the Dominion Museum by Walter Bullers family in 1906. Walter Buller,

	Rotorua		
Rotorua			
Overall	1745	520	65

W-4211-0000



**Museum of New Zealand Te Papa Tongarewa
ME015724**

Epa pataka (end wall post for storehouse)

Unknown (-)

Ngāti Pikiao

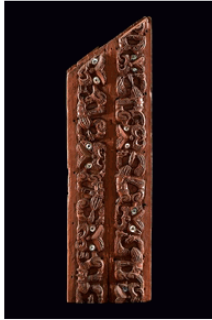
Te Arawa

Ngati Pikiao; Acquired from Te Pokiha by Gilbert Mair and Walter Buller in January 1886/ Presented to the Dominion Museum after Sir Walter Bullers death.

Rotorua

Rotorua			
Overall	1840	480	60

W-4211-0000



**Museum of New Zealand Te Papa Tongarewa
ME015726**

Maihi (bargeboard)

Unknown (-)

Ngāti Pikiao

Te Arawa

Obtained from Harete and Raiwhara of Ngati Pikiao by Gilbert Mair on behalf of Walter Buller in 1886. Gifted to the Dominion Museum in 1906 by the family of Walter

Taheke

North Island			
Overall	3015	495	40

W-4211-0000



**Museum of New Zealand Te Papa Tongarewa
ME015727**

Maihi (bargeboard)

Unknown (-)

Ngāti Pikiao

Te Arawa

Walter Buller, Te Pokiha Taranui of Ngati Pikiao . Collected in 1886 (January) by Gilbert Mair, for Walter Buller. Exhibited by Buller at the Colonial and Indian

Rotorua

Rotorua			
Overall	3442	530	182

W-4211-0000



**Museum of New Zealand Te Papa Tongarewa
ME015729**

Epa pataka (end wall post for storehouse)

Unknown (-)

Ngāti Pikiao

Te Arawa

Walter Buller, Te Pokiha Taranui of Ngati Pikiao . Collected in 1886 (January) by Gilbert Mair, for Walter Buller. Exhibited by Buller at the Colonial and Indian

Rotorua

Rotorua			
Overall	1410	420	50

W-4211-0000



**Museum of New Zealand Te Papa Tongarewa
ME015728**

Paepae (outer threshold)

Unknown (-)

Ngāti Pikiao

Te Arawa

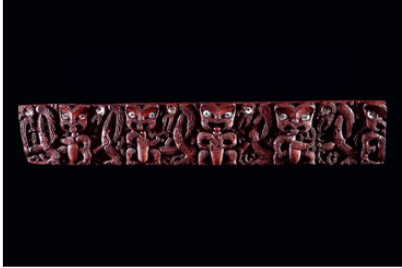
Walter Buller, Te Pokiha Taranui of Ngati Pikiao .

Collected in 1886 (January) by Gilbert Mair, for Walter Buller. Exhibited by Buller at the Colonial and Indian Rotorua

Rotorua

Overall 2472 411 148

W-4211-0000



**Museum of New Zealand Te Papa Tongarewa
ME015730**

Epa pataka (end wall post for storehouse)

Unknown (-)

Ngāti Pikiao

Te Arawa

Walter Buller, Te Pokiha Taranui of Ngati Pikiao .

Collected in 1886 (January) by Gilbert Mair, for Walter Buller. Exhibited by Buller at the Colonial and Indian Rotorua

Rotorua

Overall 2110 195 45

W-4211-0000



**Museum of New Zealand Te Papa Tongarewa
ME015731**

Tekoteko (gable figure)

Unknown (-)

Ngāti Pikiao

Te Arawa

Walter Buller, Te Pokiha Taranui of Ngati Pikiao .

Collected in 1886 (January) by Gilbert Mair, for Walter Buller. Exhibited by Buller at the Colonial and Indian Taheke, Rotorua

North Island

Overall 1230 130 135

W-4211-0000



**Museum of New Zealand Te Papa Tongarewa
ME015733**

Heke pataka (rafter for storehouse)

Unknown (-)

Ngāti Pikiao

Te Arawa

Walter Buller, Te Pokiha Taranui of Ngati Pikiao .

Collected in 1886 (January) by Gilbert Mair, for Walter Buller. Exhibited by Buller at the Colonial and Indian Rotorua

Rotorua

Overall 2190 270

W-4211-0000



**Museum of New Zealand Te Papa Tongarewa
ME015732**

Heke pataka (rafter for storehouse)

Unknown (-)

Ngāti Pikiao

Te Arawa

Walter Buller, Te Pokiha Taranui of Ngati Pikiao .

Collected in 1886 (January) by Gilbert Mair, for Walter Buller. Exhibited by Buller at the Colonial and Indian Taheke, Rotorua

North Island

Overall 2200 270

W-4211-0000



**Museum of New Zealand Te Papa Tongarewa
ME015734**

Kuaha (door)

Unknown (-)

Ngāti Pikiao

Te Arawa

Walter Buller, Te Pokiha Taranui of Ngati Pikiao .

Collected in 1886 (January) by Gilbert Mair, for Walter Buller. Exhibited by Buller at the Colonial and Indian Taheke, Rotorua

North Island

W-4211-0000



**Museum of New Zealand Te Papa Tongarewa
ME017092**

Tauihu (canoe prow)

Lyonel Grant (1957 -)

Ngāti Pikiao

Carved by Lyonel Grant, 1984, at the New Zealand Maori Arts and Crafts Institute, Rotorua.

1984

North Island

Overall 2000 930 620

W-3621-QB00



**Museum of New Zealand Te Papa Tongarewa
ME023134**

Kumete

Te Ngaru Ranapia (- 1936)

Ngāti Pikiao [attributed]

"Given to Mr F, Chambers in early 1900's by the Ngāti Whakaue(?) tribe in Rotorua in thanks for helping Māori in early days."

circa 1900 Rotorua

Rotorua

Overall 515 200

W-3621-27BD



Museum of New Zealand Te Papa Tongarewa

ME022635

Whariki (mat)
Matekino Lawless (-)
Christina H. Wirihana (-)
Ngāti Maniapoto [attributed]
Ngāti Raukawa [attributed]
Ngāti Māhanga (Waikato) [attributed]
Ngāti Pikiao [attributed]
1998
North Island
Harakeke (New Zealand flax), dye
Overall 3100 1900

Museum of New Zealand Te Papa Tongarewa

ME024046

Whariki
Unknown (-)
Ngāi Tūhoe [attributed]
Ngāti Pikiao [attributed]
Gifted to vendor's grandparents, Amy and Lyonel Clark (Pakeha) when the family left Ruatahuna c1950s. Vendor was aged 4 and living with her grandparents and parents circa 1910 Ruatahuna
Ruatahuna
Approximate 3030 1630

W-3624-JB03



Museum of New Zealand Te Papa Tongarewa

ME024645

Poupou (side wall post) "Te Ngaru Ranapia"
Lyonel Grant (1957 -)
Ngāti Pikiao
Te Arawa
Acquired by means of commission. Carved over a period of one year at the artist's address, State Highway 30, Rotorua.
2020
Rotorua
totara heartwood, paua shell
Overall 2310 900 370

Museum of New Zealand Te Papa Tongarewa

ME024754

Kete whakairo (patterned bag) named 'Hine Raumati'
Alixene Curtis (20 May 1970 -)
Ngāti Pikiao
Te Arawa
Ngāti Whakaue
Te Whakatōhea
Ngā Ariki Kaipūtahi
Woven in Mangakino 2021 by Alixene Curtis (Ngāti Pikiao, Te Arawa, Ngāti Whakaue, Ngā Ariki Kaipūtahi, Whakatōhea)
2020 - 2021
Mangakino
Harakeke (New Zealand flax), Kiekie, Tōtara
Overall 375 570 225

W-3621-0000



**Museum of New Zealand Te Papa Tongarewa
ME024693**

Tokotoko (Whaikōrero rakau)

Unknown (-)

Ngāti Pikiao

Lot 70 Tokotoko Whakairo attributed to Patoroumu
Tamatea (Ngāti Tamateatutahi hapū) Ngāti Pikiao
Rotorua

Rotorua			
Support	900	90	40

W-3621-0000



**Museum of New Zealand Te Papa Tongarewa
ME024755**

Kete Whakairo (patterned bag) named 'Hine Takurua'
Alixene Curtis (20 May 1970 -)

Ngāti Pikiao

Te Arawa

Ngāti Whakaue

Te Whakatōhea

Ngā Ariki Kaipūtahi

Woven iin Mangakino 2021 by Alixene Curtis (Ngāti
Pikiao, Te Arawa, Ngāti Whakaue, Ngā Ariki Kaipūtahi,
Whakatōhea)

2020 - 2021

Mangakino

Harakeke (New Zealand flax) and pīngao



**Museum of New Zealand Te Papa Tongarewa
ME024756**

Kete whakairo (patterned bag) named 'Hine Pīngao'
Alixene Curtis (20 May 1970 -)

Ngāti Pikiao

Te Arawa

Ngāti Whakaue

Te Whakatōhea

Ngā Ariki Kaipūtahi

Woven iin Mangakino 2021 by Alixene Curtis (Ngāti
Pikiao, Te Arawa, Ngāti Whakaue, Ngā Ariki Kaipūtahi,
Whakatōhea)

2020 - 2021

Mangakino

Pīngao, whitau (muka), albatross feather



**Museum of New Zealand Te Papa Tongarewa
WE001149**

Whakawae (door jamb)

Unknown (-)

Ngāti Pikiao [attributed]

Ngāti Tara a Whai [attributed]

Te Arawa [attributed]

KA Webster Collection. Acquired by Webster in the UK
on 14 May 1952 from "Hooper" by means of exchange.

Sent back to New Zealand in 1958. "Taiheikei, Lake

1750-1900 Taheke; Lake Rotoiti; Rotorua

Rotoiti, Lake

Overall	946	145	154
---------	-----	-----	-----

W-3621-QE00

